

# WEATHER

|                    | Min. | Max. | Precip. |
|--------------------|------|------|---------|
| Wednesday, Nov. 12 | 36   | 53   | 0.00    |
| Thursday, Nov. 13  | 34   | 53   | Trace   |
| Friday, Nov. 14    | 26   | 39   | 0.01    |
| Saturday, Nov. 15  | 32   | 37   | Trace   |
| Sunday, Nov. 16    | 29   | 52   | 0.00    |
| Monday, Nov. 17    | 37   | 57   | 0.00    |
| Tuesday, Nov. 18   | 30   | 66   | 0.00    |

ONE HUNDRED-SIXTH YEAR—No. 23

12 Pages This Week

Plus Supplements

CHELSEA, MICHIGAN, THURSDAY, NOVEMBER 20, 1975

15c per copy

SUBSCRIPTION: \$6.00 PER YEAR

# The Chelsea Standard

## QUOTE

"It's too bad that the future generations can't be here to help us spend their money."  
—Anonymous.

## 'Very Good' Corn Harvest Filling Storage

Area farmers have good reason to boast about their corn crop this year. According to Marcella McDaniel, grain clerk at Honegger's on Dexter-Chelsea Rd., it is very good. "The damage is down, the foreign material is not bad and there is a lot of it (corn)." This year farmers are finding a one-acre field to yield anywhere from 75 to 100 bushels of corn. And that is quite a jump from the 30-50 bushels yield per acre as reported in the 1974 issue of The Standard. The yields are in fact so good that Honegger's reports a long line of truckloads waiting at their elevators some times until late evening and early morning hours. Ms. McDaniel said that in some places farmers arrive at the elevators only to dis-

cover that they must call ahead for an appointment. Financial return on the farmer's investment is at an average of \$2.20 a bushel, down four cents from last year. When questioned about the drop in price, Ms. McDaniel said, "Last year the price was high because the crop was poor and the supply of good corn that could be marketed was limited." Unlike last year, when untimely rainfalls hindered the corn production, the rain in 1975 has fallen at all the right times, allowing farmers to plant, the corn to grow and then to harvest without concerning themselves with wet fields and wet corn. Even the heavy rainfalls reported in August did not adversely effect the crop.

## Basketball Scrimmage Scheduled

The 1975-76 Chelsea varsity basketball season bounces into full swing this week with the Bulldog cagers engaging in a tri-scrimmage with Hudson Tigers and the Tecumseh Indians. The scrimmage will be held at Tecumseh at 9 a.m. on Saturday, Nov. 22.

This year's varsity club will be captained by seniors Randy Guenther and Howard Salyer. Both of these returning lettermen are slated for starting roles for Coach Balistrere's Bulldogs. "I'm looking for a lot of leadership from my captains," Balistrere stated. Tom Hafer and Dave Watson are the other two remaining lettermen off last year's 16-5 club. "We lost a lot to graduation," Balistrere stated, "but we are hopeful and enthusiastic about the oncoming year."

A senior newcomer to this year's club is 6'3" center Mike Tobin. "Mike has an exceptionally Varsity games are scheduled to begin on the courts at approximately outside shot for a big man and ironically enough, plays better outside than in under the basket. Mike could definitely be a big help to us this year," Balistrere continued.

Junior Tony Robards is another possible starter. "He is very aggressive and strong underneath the basket and he drives extremely well," said Coach Balistrere. Randy Sweeney is slated for another forward position. Randy is also aggressive and a good rebounder.

This year's club boasts of a host of junior guards: Pete Peeney, Anthony Houle, Don Morrison, Jeff Sweet, and Dean Thompson. "All the guards are quick and play good defense. They will be competing for spots both as guards and forwards," said Balistrere. Jerald Benjamin is a 6'2", 175 lb. sophomore who should see a lot of action this year. "I'm looking for good things from Jerry," Coach Balistrere stated.

Assisting Coach Balistrere in the coaching effort this year is Jim Winter. Serving as the team manager will be freshman Jeff Rabbitt and Mike Barels. Statisticians are Bill Rademacher and John Storey. Steve Dresch and Jim Marshall will be snapping action shots of the team. The first home basketball game will be played Friday evening, Nov. 28 with Jackson Northwest, mately 8 p.m.

## Hockey Team Plays to Tie in League Opener

The Chelsea high schoolers hockey team played Napoleon to an exciting 2-2 tie in their league opener Sunday, Nov. 16.

Greg Hastings scored both goals with assists from Harold Vandervoort. Outstanding play came from the Chelsea defense and the back checking of the forwards.

The goal tending was handled by Mike Check who did a great job despite Chelsea penalties.

Chelsea will play Tecumseh Sunday, Nov. 23 at 3 p.m. at the Jackson Ice Arena.



**NEW OFFICERS:** Friends of the McKune Memorial Library met last Thursday evening to install new officers for 1975-76. Newly installed officers are, from left, Mrs. Raymond Seitz, secretary-treasurer; Mrs. Stephen Haydock, vice-president; and Mrs. James Sprague, president. Out-

going officers are Mrs. Earl Klemer, past president and Mrs. James Schardin, past secretary-treasurer. The Friends of the Library work with the library board on improvements for the building and also assist in raising monies for financing those improvements.

## Library Friends Elect Officers

Friends of the McKune Memorial Library met Thursday evening, Nov. 13 to discuss recommendations to the Library Board on re-furnishing needs for the second floor Historical Room.

Donations from the Friends Membership drive held last spring will go towards the improvements. There are now 86 paid memberships, including one life membership. Five hundred dollars of the \$708 collected will be presented to the Library Board at their next meeting.

Officers for the 1975-76 year were also installed. They are, Mrs. James Sprague, president; Mrs. Stephen Haydock, vice-president; Mrs. Raymond Seitz, secretary and treasurer. Outgoing officers of the Mrs. Earl Klemer, president, and Mrs. James Schardin, secretary-treasurer.

The Friends of the Library was formed 26 years ago in October of 1949 for the purpose, according to the by-laws of "enlisting citizens as active friends of Chelsea to help support it and to further all projects that naturally integrate with the library, its facilities and its educational aims."

The group met in the Municipal Building until July of 1959 when it moved to its present meeting location at the McKune Memorial Library. The group was dormant for several years until 1972 when the organization became active again. Past projects of the organization have been carpeting of the library and the landscaping of grounds and refurbishing of the club room on the second floor.

## Biddy Basketball Registration Scheduled for Saturday, Dec. 6

Instruction, competition, and recognition—the big three of Chelsea Recreation Council's biddy basketball program—are back on the sport scene again this year.

Biddy basketball is designed for youngsters 7 through 12 years of age. Participants will generally be divided by age in all segments of the program.

The first three weeks of biddy basketball are spent with "personalized and individualized instruction for each player in all aspects of basketball, including offensive drills, defensive drills, shooting, dribbling, etc.

After these first three weeks, the young cagers will be divided into three leagues: the National Basketball Association, consisting basically of 11-, 12- and some 10-year-olds; the American Basketball Association, composed primarily of 10-, 9-, and some 8-year-olds; and the World Basketball Association, designed basically for 7- and 8-year-olds. Program director, Jon Schaffner, notes, however, that the players are divided more on ability than on age, in order that they play against others of comparable ability.

After division into leagues, each league will be divided into equal teams. Each team will run drills for 45 minutes prior to their regularly-scheduled Saturday game. All players must play a full two quarters, a complete half, in each game.

An extra event on the final Saturday of the program is a trophy day, in which participants will be divided into five age groups, 7-, 8-, 9-, 10-, and a combined 11- and 12-year-olds group to compete in four categories: speed dribbling, timed bounce passing into a square on the wall, five foul shots, and a timed 30 seconds in which each player makes as many

baskets as possible. The top five players in each category of each age group will receive ribbons and the over-all top three boys in each age group will receive trophies.

Registration for this year's program is scheduled for Saturday, Dec. 6, from 9 to 10 a.m. at the Chelsea High school gym. Registration fee is \$5 per youngster. Included in the fee is the cost of a game jersey with numerals, team name, and league name for each player to keep. All players will also receive a certificate acknowledging participation.

"We hope to make the biddy basketball program for this year even better than the very successful program of last year, in which 180 players participated," says Schaffner. Schaffner also reports that coaches are needed for the 13 teams. "If you want to work with youngsters in a good wholesome sport, we want you," he says. "The directors will work with you as coaches and help you show the players the drills we would like to have you run."

Coaches need to spend two hours every Saturday morning working with approximately 10 "very enthusiastic" players. To volunteer for coaching, contact Schaffner at 475-8802.

Following registration Dec. 6, practice on drills will be conducted from 10:15 a.m. to 12:15. For the remaining nine Saturdays the program biddy basketball will be scheduled from 10:15 a.m. to 12:15 a.m.

The winner of the Chelsea, Pinckney game will face Dexter on Saturday, Nov. 22 at 8 p.m. The finals will be played Nov. 24 at 7 p.m. All games will be played at Brighton High school.

Chelsea High's girls basketball team was defeated by Dexter's team 34-22. Dexter is tied for first place in the league with Lincoln.

The Chelsea girls had a slow first half and were outscored 8-22 by half-time. Chelsea then came (Continued on page six)

## Foster's Report Break-in

\$105 in small change was taken from Foster's Men's Wear, 109 S. Main St., sometime between 5:30 p.m. Nov. 8 and early Monday morning, Nov. 10.

According to Chelsea police reports, the missing cash was discovered by the store owner, Robert Foster, when he opened his store for business Monday morning.

Police reported that entrance to the business was gained by pushing open two boards that covered a broken window located on the east side of the building. Once inside the storage shed the rear doors to the store were pushed open. Police report no suspects and the case remains open pending further investigation.

## Early Copy Needed for Next Week's Edition

Because of the Thanksgiving holiday next Thursday, Nov. 27, next week's issue of The Standard will be mailed Wednesday morning. The abbreviated production schedule will make it necessary for us to have display advertising by Saturday morning, classified advertising by 1 p.m. Monday and news items as soon as possible after the event.

## Deer Hunters Report Quick Success in Area

While the Michigan Department of Natural Resources has established an office for the purpose of deer hunters who wish to report their kill at the SCS-ASCS, 6101 Jackson Rd., it was no less than five minutes after we arrived in our offices Saturday morning before hunters began jamming the telephone lines and the driveway to be the first to report their kill on opening day of the 1975 firearms season.

First to reach The Standard office by phone was 19-year-old Richard Clark of 7953 Clear Lake Rd., who reported that he shot a five-point buck weighing 180 pounds at 7:30 a.m. Clark made the kill on M-52 near the intersection of Clark Lake Rd.

Unfortunately, Clark cannot take the honor for shooting the first buck on opening day. The Standard took reports from two hunters who reported 7 a.m. killings. Walt Cozzens arrived at The Standard office late Saturday morning with a four-point buck he managed to shoot off Roe Rd. He estimated the weight to be about 185 pounds while Ted Cheever reported killing a 140-pound eight-point buck.

Other early hunters who took time off to boast about their prizes are John Marzec of Island Lake Rd. who shot a six-point buck at 7:15 a.m.; Bob Liston of Livonia who was happy with a kill made on land belonging to Gene Shoemaker. He arrived at our offices with his 11-point 180-pound deer and remarked that this is the first year he has hunted in the Chelsea area. In past years he has headed north for the season, however, a wedding in Livonia prevented him from repeating the trip . . . lucky for him.

The heaviest buck reported and certainly the one with the most prized rack of 14 points was reported by Rick Miller of 4648 Dexter-Pinckney Rd. Miller reported that he shot the 220-pound animal with a 12 gauge buck shot at a distance of 40 yards. The time: 8 a.m.

An unusual buck was taken by Lawrence Salyer at 8:30 a.m. Saturday. Salyer with the help of friend, Carl Foster, brought in his seven-point three-legged buck to show to The Standard reporter.

Looking in past issues of The Chelsea Standard, one sees photos of hunters and their deer have been taken against a background of snow. However, this year hunters may have some trouble tracking deer because of the unseasonably warm weather.

Tom Hodgson of the Waterloo Recreation Area, a naturalist, said the state has not received reports of a good number of deer killed on state land and added that the lack of snow may make the hunt all that more difficult for hunters who have depended on footprints in the past.

## Community Thanksgiving Service Slated

Members of the Chelsea community are invited to worship together Wednesday evening, Nov. 26 at the annual Community Thanksgiving Service sponsored by the Chelsea Ministerial Fellowship. This year the service will be held at 7:30 p.m. in Zion Lutheran church.

According to Zion's pastor, John Morris, this community service is being planned as part of the Bicentennial observance and is to reflect laymen's witness with thanks to God.

Pastor Morris said that a chosen family from participating churches will share their own personal Thanksgiving message. Clergymen will also be present to assist with the Thanksgiving service. A combined choir will sing anthems of praise and Chelsea Kiwanis Club members will serve as ushers. Other anthems will be provided by Zion's Junior and Senior choirs and a special children's lesson will also be featured.

Pastor Morris noted that this year's offering will go toward local and world hunger relief.

The service will begin at 7:30 p.m. and Pastor Morris, together with all the participating churches, extends a sincere invitation to area residents, their family and friends to attend the worship service.

## Poster Contest Helps Promote Blood Clinic

"Help Save a Life this Christmas." Chelsea Jaycees are inviting area elementary, middle school and high school students to help them save a life this Christmas by participating in a poster contest as part of their annual holiday blood drive.

Students may submit entries in the contest to their respective school art teachers no later than Dec. 1 in order to be considered for the judging. \$5 cash prizes will be awarded in each elementary, middle school and high school categories.

According to Robert Ponte, information that must appear on

the posters are date, Saturday, Dec. 20; the time, 9-3 p.m.; the place, the Fair Service Center, for appointments phone Sandy Brown, 475-7834; and who is sponsoring the drive, the Chelsea Jaycees. Other information that might be included is that donors must be no younger than 18 years of age and no older than 65 and must be in good health.

97 pints of blood was given last year in Chelsea, and this year the Jaycees are hoping to see some 125 pints donated.

According to Jaycees, there is a rise in accidents over the holiday (Continued on page three)

## 'I Remember Mama' Opens Friday Night

"I Remember Mama" opens tomorrow night (Friday, Nov. 21) at Chelsea High school auditorium starting at 8 p.m.

Telling a tenderly human and humorous story of a couple who have come from Norway to San Francisco to raise their family, this play by John van Druten which channeled up an impressive 713-performance run in New York in 1944, will have a second performance Saturday, Nov. 22.

"I Remember Mama" is being presented by the Chelsea High School Drama Class and is under the direction of Martha Hahn and DiAnn L'Roy.

"I Remember Mama" was de-

## Who Wrote Chelsea High Fight Song?

The Chelsea High school fight song. Most Chelsea High school graduates know it, but it seems nobody knows who wrote it or when. In an effort to discover the origins of the verse and the tune, The Standard is publishing a copy of the lyrics hoping they will recall the name of the composer to Chelseaites who might have been around when the song was written. It goes as follows:

Oh Chelsea High, Oh Chelsea High  
We're off to cheer for you.  
No matter if we face defeat  
We'll stay and see you through.  
In every game, we list our aim,  
V-I-C-T-O-R-Y.

So give a cheer that all will hear  
For dear ole' Chelsea High.  
Fight!

Anyone having any knowledge about the origins of the Chelsea High school fight song is requested to contact The Standard.



**PART OF THE FAMILY** in the Chelsea High school drama class production of "I Remember Mama" to take stage this Friday and Saturday at CHS are the "three aunts." In the production of the three pictured here from left Aunts Tina, Sigrid and Jenny portrayed by Sue Leach,

Kathleen Treaso and Sue Frisbie, respectively, offer unneeded advice while the third finds romance belatedly at the age of 42. Tickets for the production may be purchased at the door to the auditorium. Curtain time is 8 p.m.



**FIRST DEER OF SEASON:** Walt Cozzens and his four point 185 pound buck was one of two hunters who reported a 7 a.m. kill last Saturday morning, the opening day of the firearms season for deer. Cozzens shot his buck off Roe Rd.



Established 1871 **The Chelsea Standard** Telephone 475-1371

Excellence Award By Michigan Press Association  
1951-1952-1960-1964-1965-1966

Walter P. Leonard, Editor and Publisher

Published every Thursday morning at 300 North Main Street, Chelsea, Mich. 48118, and second class postage paid at Chelsea, Mich., under the Act of March 3, 1879.

Subscription Rates (Payable in Advance)

| In Michigan:              | Outside Michigan:         |
|---------------------------|---------------------------|
| One Year .....\$6.00      | One Year .....\$8.50      |
| Six Months .....\$3.50    | Six Months .....\$4.50    |
| Single Copies .....\$ .20 | Single Copies .....\$ .25 |

MEMBER **NATIONAL PAPER ASSOCIATION** - Founded 1885

National Advertising Representative:  
**MICHIGAN NEWSPAPERS, INC.**  
257 Michigan Ave.  
East Lansing, Mich. 48823

## Uncle Lew from Lima Says:

DEAR MISTER EDITOR:

My old lady has quit taking stuff to the fair. One year recent she and some of her church women decided to make a patch quilt to show, and the project about broke up that old gang of hers. That bunch of hens squabbled about everything from whose time it was to set up the quilting frames to how big their initials was to be on the inside of one of the corner squares where nobody could see em. What they wound up with looked like Joseph's coat of many colors, and the only reason they got a ribbon was they had three ribbons to give away and three quilts.

So when me and the old lady talk about the fair now she says how much fun they used to be, and I think of that feller that sets on the stool over the water in the cage and dares folks to spend 50 cent fer three chances

### Howell Livestock Auction

Starts 1 p.m. Every Monday  
Phone 546-2470. **Jim Franklin**

### Market Report for Nov. 17

**CATTLE**—  
Bulk Gd.-Choice Steers, \$45 to \$47  
Fed High Choice Steers, \$47 to \$47.50  
Gd.-Choice Heifers, \$40 to \$42  
Fed Heifers, \$30 to \$34  
Lt.-Mid, \$29 and down.

**COWS**—  
Heavy Cows, \$25 to \$27  
Mid-Commercial, \$20 to \$22.50  
Canner-Cutter, \$14 to \$20  
Fat, Best Cows, \$18 to \$22.

**BULLS**—  
Heavy Bologna, \$26 to \$30  
Light and Common, \$25 and down.

**FEEDERS**—  
400-600 lb. Good-Choice Steers, \$35 to \$38  
600-800 lb. Good-Choice Steers, \$32 to \$35  
300-600 lb. Good-Choice Heifers, \$30 to \$32  
300-500 lb. Holstein Steers, \$18 to \$22  
500-800 lb. Holstein Steers, \$22 to \$25

**CALVES**—  
Prime, \$48 to \$54  
Good-Choice, \$40 to \$50  
Heavy Heifers, \$28 to \$30  
Cull & Med., \$5 to \$15  
Calves going back to farms sold up to \$25

**SHEEP**—  
Woolled Slaughter Lambs:  
Choice-Prime, \$20 to \$44  
Good-Utility, \$37 to \$40  
Slaughter Ewes, \$6 to \$12  
Feeder Lambs, All Weights, \$35 to \$40

**HOGS**—  
210 to 240 lbs., No. 1, \$1 to \$32.60  
200 to 250 lbs., No. 2, \$9 to \$31.50  
Heavy Hogs, 250 lbs. up, \$45 to \$50  
Light Hogs, 190 lbs. and down, \$40 to \$50

**Sows**:  
Fancy Light, \$41 to \$43  
300-500 lb., \$40 to \$41  
500 lbs. and up, \$38 to \$40

**Boars and Stags**:  
All Weights, \$39 to \$48

**Feeder Pigs**:  
Per Head, \$30 to \$46  
Est. 40 lb. pigs, \$55 to \$40

**HAY**—  
1st Cutting, per bale, \$1.00 to \$1.50  
2nd Cutting, per bale, \$1.50 to \$2.25

**STRAW**—  
Per Bale, 50c to 65c

**COWS**  
Tested Dairy Cows, \$300 to \$500  
Tested Beef Type Cows, \$150 to \$250

**THE LUTHERAN RETIREMENT COMMUNITY, INC.**  
SUBORDINATED DEBENTURES

**10%**  
up to

per annum, current yield, maturing in seven and one half years, interest payable semi-annually. The above interest rate is the maximum rate payable under the variable rate plan which is computed to be one percent over the prime interest rate prevailing at the Detroit Bank & Trust Co., trustee for the L.R.C. Inc. Available only to bona fide Michigan residents.

**THE LUTHERAN RETIREMENT COMMUNITY, INCORPORATED**  
16935 West Fourteen Mile Road  
Birmingham, Michigan 48009 644-8912

Please send information to:

Name \_\_\_\_\_  
Address \_\_\_\_\_  
City \_\_\_\_\_ State \_\_\_\_\_  
Zip \_\_\_\_\_ Phone \_\_\_\_\_

★ **MICHIGAN MIRROR** ★  
By Elmer E. White, Secretary, Michigan Press Association

**Prison Full**  
The spectre of men sleeping on cots in the halls of Michigan prisons seems outrageous—but it's no beyond the realm of possibility, according to state corrections director Perry Johnson.

"The situation is almost that bad now," Johnson says, noting that there are offenders in segregation units and detention cells waiting for beds in the general population at the Southern Michigan Prison in Jackson.

Worst of all, Johnson says, "there doesn't seem to be any immediate relief in sight."

Michigan reports more confined felons under the jurisdiction of the Corrections Department in late October than at any other time in the state's history.

Some 10,612 offenders were under the care of the department in the state's seven institutions, 12 camps and 63 community treatment units at that time. That tops the previous record, of June 1958, by 38 persons.

Johnson reports also that the late October count was 1,860 higher than in January and more than 2,000 higher than one year ago.

"We don't think that the population will continue to increase at this extremely high level indefinitely," he says, "but we also don't believe we will get substantial relief because of the present high felony conviction rate."

The problem of where to put offenders may be slightly alleviated after the first of the year, Johnson says.

That's because the department expects to open an additional 360 beds at the Muskegon Correctional Facility and hopes to convert the Ionia State Hospital to a corrections facility for 280 inmates.

"These two steps will, however, only help temporarily," Johnson says. "I suspect that by May of 1976, we will be back in the same situation."

**Only by Air**  
Anyone who's ever tried to climb a sand dune, sinking in to the knees, gaining one step and falling back two, will appreciate the problem.

How can you tote 75,000 pounds of lumber up a 200-foot-high dune without flattening the dune or at least damaging its shape?

With a helicopter, of course.

That's how the Department of Natural Resources, with the help of the Michigan National Guard, managed to put in place the materials for an 800-foot-long boardwalk at Hoffmaster State Park near Muskegon recently.

The walkway is being constructed in conjunction with a \$400,000 nature interpretive center planned for completion during the nation's bicentennial.

"If we had to transport the lumber up the dune by trucks or drag it up some other way, there would have been serious damage done to the fragile ecology," says Roland Nagel, the department man in charge of nature interpretation programs at state parks in southern lower Michigan.

"That kind of havoc would have defeated the purpose of the project—to provide a means of access for the thousands of visitors who come to Hoffmaster each year, while preserving the environment on the dunes."

When the boardwalk project is complete, there'll be two viewing platforms and stairways providing easy access for folks who want to see the sights.

A nature center, located at ground level, will house exhibits, including 333 campsites, is located Hoffmaster, a 1,030-acre park in off US-31 south of Muskegon.

## JUST REMINISCING

Items Taken from the files of The Chelsea Standard

**4 Years Ago...**  
Thursday, Nov. 18, 1971  
Members of the Chelsea Kiwanis Club were treated to films of the Jackson Northwest game at their Monday night dinner meeting this week. Experts in hand to explain the plays that gave the Bulldogs their 21-7 win over Northwest were Richard Bareis, Sam Vogel, Jeff Hughes, Tom McKernan, Jim Tallman and Head Coach Phil Bareis.

Repairs necessitated by last Monday's furnace explosion at the high school will hopefully be completed by the first of next week, Business Manager Fred Mills said Tuesday. Damage from the blast is estimated at \$10,384.

Among the first area hunters to report their kill on opening day was The Chelsea Standard's own Mitchell Zink. Mitch was hunting with his father-in-law, Bill Vogel, and friend, Walt Brown, near his North Lake home when he shot the four point.

Three Chelsea area 4-H'ers were among approximately 35 state project champs this year, winning trips to the National 4-H Congress to be held in Chicago, Nov. 28 through Dec. 2. They are Jean Feldkamp, Bonnie Powers and Valerie Voegel.

**14 Years Ago...**  
Thursday, Nov. 23, 1961  
James Schneider, son of Mr. and Mrs. A. S. Penhalligon, received Life Scout Awards at the Boy Scout Court of Honor held Monday, Nov. 13 in the basement of the Congregational church.

Both Scouts are members of Troop 25 of which Robert Foye is scoutmaster and Fred Worden assistant scoutmaster.

A total of 420 individual Christmas Club checks were mailed out Monday by the Chelsea State Bank, distributing a grand total of \$47,500 in time for Christmas shopping.

Chelsea Jaycees plan to begin a survey of more than 300 homes in the community within the next month. Families will be interviewed and opinions gathered on education, government, public utilities and recreation in Chelsea.

George Staffan, Jr., is general chairman of the project.

Sylvan Township Supervisor Maurice Hoffman has announced that the tax per \$1,000 of tax roll valuation in the township for the tax statements will be issued Dec. 1, totals \$63.80.

Telephone Your Club News To 475-1371.

**24 Years Ago...**  
Thursday, Nov. 22, 1951  
Mrs. Elvira Visel, announced this week that she has sold her Ann Arbor store known as the Chelsea Flower Shop to Mr. and Mrs. Sam Bell. Mrs. Bell has been an employee at the store for the past 11 years. Mrs. Visel continues in her partnership with the F. S. Armstrongs in the Chelsea Greenhouses on Lingane Rd. here which she founded 50 years ago last September.

Chelsea High school debaters are entering the Michigan High School Debate contest sponsored jointly by the University of Michigan Bureau of School Services and the Detroit Free Press. Chelsea's debate team is composed of Barbara Speer and Jean Schweinfurth on the affirmative side and David Berke and Sandra Baldwin, negative.

A panel discussion on new school curriculum will be a feature of the High School PTA meeting next Monday, Nov. 26, at the school. Leaders will be Mrs. Clinton Collier, Mrs. Lawrence Fowler, Mrs. Kenneth Proctor and Charles Cameron, high school principal.

**34 Years Ago...**  
Thursday, Nov. 20, 1941  
Merckel Brothers in addition, to issuing more than 100 deer licenses, have issued 495 small game hunting licenses this season.

Bob Foster will lead the West Side business men against Jerry Neihaus' West Siders in the annual donkey basketball game to be held at the Chelsea high school gym on Nov. 25.

Members of the Women's Guild of St. Paul's church held a social Thursday evening in connection with their regular meeting. During the business session Mrs. Elmer Pierce was elected vice-president with Mrs. Albert Ashtal as treasurer for 1942. Mrs. Norman Schmidt will continue in office as president and Mrs. Leroy Satterthwaite as secretary for the ensuing year.

**ZINC AND CHROMIUM**  
Zinc, a trace element is essential to life. In man, zinc is a must for normal growth, sexual development, and wound healing. The best food sources of zinc are seafood, meat, eggs, liver, legumes, and whole grains. Chromium is also essential in the diet of man. The best food sources are meats, fats such as corn oil, whole grains and brewer's yeast.

**DUNBAR'S DEXTER LOCKER**  
PAUL DUNBAR, OWNER  
8083 MAIN ST., DEXTER PHONE 426-8466

**BEEF SIDES**  
**98¢ lb.** (Avg. 300 lbs.)  
GET YOUR  
**'20 REBATE**  
ON READY-CUT ORDERS

**DEER PROCESSING**

Discount to Civic Groups - We Accept Federal Food Stamps

**CUSTOM SLAUGHTERING & PROCESSING**

**Chelsea Lanes Mixed**  
Standings as of Nov. 14

|                       | W  | L  |
|-----------------------|----|----|
| Countryside Builders  | 46 | 31 |
| Buckeye Transplants   | 45 | 25 |
| Adamson & Henson      | 41 | 35 |
| Doug's Painting       | 41 | 29 |
| DJ's                  | 40 | 37 |
| Mark IV Lounge        | 40 | 37 |
| The Hopefuls          | 40 | 30 |
| U No's                | 37 | 33 |
| Torricce & Rawson     | 37 | 33 |
| The Fonz's            | 37 | 33 |
| Floyd's Gang          | 34 | 38 |
| Federal Screw Outlaws | 34 | 38 |
| Bollinger's           | 32 | 38 |
| Ann Arbor Centerless  | 32 | 38 |
| Harmon & Cook         | 25 | 45 |
| Hook, Line & Stinkers | 24 | 53 |
| Rushing's Temp. Help  | 23 | 40 |

Women, 150 games or better: D. Cozzens, 158, 156; J. Norris, 150, 154; L. Behnke, 153, 150; D. Keizer, 159, 177; E. Harmon, 160; B. Torricce, 174; A. Rawson, 171; C. Messner, 181, 170, 158; R. Dils, 164, 157, 168; M. Henson, 161; D. Alber, 160, 154, 195; D. Alexander, 187; B. Wisniewski, 174; B. Smith, 158.

Men, 175 games or better: D. Alexander, 217; D. Williams, 187; J. Norris, 187, 184; M. Poertner, 193, 187; E. Vasas, 181; K. Vasas, 198; J. Torricce, 176, 193; R. Rawson, 179; L. Bell, 199; R. Adamson, 203.

Men, 500 series or better: D. Alexander, 543; J. Norris, 542; M. Poertner, 539; E. Vasas, 512; J. Torricce, 537; L. Bell, 536.

**Bulldogs Mixed**  
Standings as of Nov. 13

|                     | W  | L  |
|---------------------|----|----|
| Good Lucks          | 31 | 13 |
| Weber Homes         | 28 | 16 |
| Spadafore's Stores  | 27 | 17 |
| Hawley Truck Repair | 26 | 18 |
| Leftovers           | 24 | 20 |
| Doug's Painting     | 22 | 22 |

Good Lucks, 450 series or better: D. Cozzens, 460; C. Messner, 509; R. Dils, 489; D. Alber, 509.

Men, 175 games or better: D. Alexander, 217; D. Williams, 187; J. Norris, 187, 184; M. Poertner, 193, 187; E. Vasas, 181; K. Vasas, 198; J. Torricce, 176, 193; R. Rawson, 179; L. Bell, 199; R. Adamson, 203.

Men, 500 series or better: D. Alexander, 543; J. Norris, 542; M. Poertner, 539; E. Vasas, 512; J. Torricce, 537; L. Bell, 536.

As program assistant since September 1973, she worked extensively with homeowners, answering questions and conducting educational programs and workshops on houseplants, flower gardening, vegetable growing, insects, and soils and fertilizers. She was also involved in community gardening projects and worked to some extent with part-time farmers and commercial floriculture and landscaping concerns.

As county horticultural agent, Ms. Lawrence will expand her work with producers and providers of horticultural goods and services, while continuing her involvement with homeowners, answering questions and solving problems, identifying plants and insects, assisting with soil testing and conducting workshops and other how-to programs.

The position of county horticultural agent is a new one created and funded by the Washtenaw County Board of Commissioners. It will not take Ms. Lawrence out of the Co-operative Extension Service office, however. She will continue to be housed there, with no change in mailing address—County Building, Ann Arbor—or phone (313) 994-2457.

**GREAT SHAKES**  
The estimated 6.7 billion tons of salt in Great Salt Lake could supply the total industrial and domestic requirements of the United States for more than 200 years.

**NEW IN THIS AREA**  
**NORRIS CARPET CARE**  
Installation, Repair, Cleaning, Scotch Guarding  
**STEAM & SHAMPOO**  
**FURNITURE CLEANING**  
**FREE ESTIMATES**  
**30 Years Experience**  
**PHONE 1-483-3908, Eves., 1-878-9026**

# Retire Rich.

**Ask us about our new savings plan that lets you defer taxes while you build your own retirement fund.**

Thanks to an act of Congress, anyone not under another pension plan can now start his own—and retire rich.

It's called an Individual Retirement Account—an I.R.A. You can contribute 15% of your annual salary to it each year, up to \$1,500 tax deferred. And you won't pay any taxes on that money until your retirement, when you're in a lower tax bracket.

Ask us for details about starting an Individual Retirement Account. Start making sure your golden years really are golden.

Member FSLIC

**ANN ARBOR FEDERAL SAVINGS**  
**AFFE**  
1135 South Main Street, Chelsea, Michigan 48118  
8081 Main Street, Dexter, Michigan 48130

PLEASE SEND INFORMATION ON TAX DEFERRED PLANS:

Name \_\_\_\_\_  
Address \_\_\_\_\_  
City \_\_\_\_\_ State \_\_\_\_\_ Zip \_\_\_\_\_  
Telephone \_\_\_\_\_



## SOUTH ELEMENTARY SCHOOL NOTES

### FROM MR. WOJCIK—

The building at South school is nearly completed now. We plan to have an Open House when the Media Center is completed, which should be in January.

Our collection of Campbell Soup labels has reached 4,000. We need help in reaching our goal of 12,000 labels. If you could save the labels for us we would appreciate it greatly. The drive will last to Jan. 10.

### READING—

Thanksgiving poems and stories are being enjoyed during November. We hope that all the children will earn an Indian boy or girl for reading five books in November. Some are finding good new stories at home for their folders, from the bulletin board articles.

The amaryllis is being measured by the second graders. It grows about an inch a day. By Christmas it should have big red flowers.

A big blue turkey and a book-worm dressed like a Pilgrim go to the ones who read the most library books in November.

Remember: A good book is like a friend!

### KINDERGARTEN—

Teacher: Mrs. Bower

An Indian wears a Buck Skin Suit. Tum, Tum, Tum! Our room is filled with Indian tents, canoes, drums and pictures. The Indians have given us many stories, songs and dances.

Our Thanksgiving feast will be on Nov. 26. We will have applesauce, corn bread and homemade butter. We hope the Indians and Pilgrims will join us for our celebration.

Many thanks to Dr. and Mrs. Borton for our tour of their dental office at the clinic. We all learned and saw many interesting things about our important teeth.

Many thanks to our room mothers for the great Halloween party and parade. We had beautiful weather and a fine time.

Some of our birthday people for October were: Beth Kenny, Howie Merkel and John Cattell.

### Room 1

Teacher: Mrs. Van Blaricum

The winter wind which blew in November and frightened Jackie

Jack Frost didn't frighten us at all. We have been busy talking about Indians, Pilgrims, turkeys and apples. We did stop one day, so we could walk to the Medical Center to have a tour of the dentist's office. Dr. Borton and his wife showed us around. We had lots of fun and again say thank you to the Bortons.

We will be preparing our own Thanksgiving feast. Each child will be bringing an apple. We will cut them up to cook and make applesauce. Using Jiffy mixes we will be making cornbread. We will also make some butter to make it taste even better. We have most of our costumes done, so we are ready to come dressed as Indians or Pilgrims for the feast. Our parents will be helping us with all this. We really appreciate their help.

Our birthday people for November are: Jamie Clucky, Jerrod Fletcher, David Steele, Anna Muner, Jennifer Salyer and Janie Harat.

### FIRST GRADE—

Teacher: Mrs. Schiller

Thanksgiving is a time to be thankful. Here are some of the things our first graders are grateful for: Jeff Stacey is thankful for his family; Kristie Centilli is glad for her baby brother; Sean Machnik is happy the Indians helped the Pilgrims; Susie Keizer loves her dog; Heather Seabury is glad to have her chicken; Spotty; Catherine Coffman loves her grandma and grandpa; Lynn Schaefer, Tina Chene, Danielle Osborne, Brenda Kenney, Curtis Heard, Norman Weber, Russell Doyle and Andy Box are grateful for food, water, bushes, trees and the sun; Bobby Salts is glad for his truck, so he can drive somewhere with his Dad; Todd Nagel is grateful for his dog, Remus, and for Thanksgiving; Laurie Fults and Kathy Barber are happy we have clothes and stores; Mark Mellish is glad he has money in his bank; Paul Lemaster is grateful for God; Tammy Erskine is thankful for each morning; Alison Chasteen is glad to have her puppies; Rusty Brown and John Geis are happy for breakfast and sugar; Melissa Bullard and Margie Myers were sick, but we know

they would be thankful for all these things; Mrs. Schiller is thankful for such good first graders! We wish everyone a happy and grateful Thanksgiving.

### Teacher: Mrs. Thodeson

Thanksgiving will soon be here. We are having fun learning about Indians and Pilgrims. We will be busy practicing songs, poems and Indian dances for our Thanksgiving program. We hope our parents will come to our celebration.

We made paper sac puppets of the wolf and the three little pigs. We had a puppet play.

We enjoy eating lunch in our new cafeteria. The art and music rooms are super.

Each of us planted a tulip bulb outside, beside our class windows. We hope to have beautiful blooms next spring.

With Mrs. Schiller's room, we want to thank Mrs. Stacey for bringing in slides and artifacts of Brazil.

Fall birthdays have been celebrated by Tim Alexander, Derek Blough, Robby Burg, Kim Clutter, Shari Erskine, Ron Grika, Robby Hubbell, Tina Kuhl, Nanette Morales, Bryan Robinette and Tammy Yost.

### Teacher: Mrs. Thornton

Reporters: Eric Bell, Melale Dils, Geoff Lansky and Kiki Ryan

We have a new girl whose name is Brigit Soltytsiak. November birthdays: Cherie Alexander.

All of us enjoyed the puppet show we had last month. It seemed so real and scary. We liked the bear and the fish.

We are learning about living and non living things. We've looked at some interesting rocks that some of us brought to school.

Thanksgiving is coming fast, and we are busy getting ready for it. We are working with Mrs. Hamilton's room. It is fun to work and learn with second graders.

David Ringe has been sick. We hope he hurries back to school, as we miss him.

Many of us are taking books home to read to our parents. Hope they enjoy them as much as we do!

Our guinea pig had two babies. They are so soft and cute. We are going to name them.

### SECOND GRADE—

Room 8

Teacher: Mrs. Hamilton

The month of November brings thoughts of Pilgrims and Indians in our room. We are working on special Thanksgiving projects with Mrs. Thornton's first graders. Before starting many of our

projects, we talked about the Pilgrims' reasons for leaving England. We traced their journeys on maps and discussed the hardships they experienced.

Presently, we are working on a play which will help to pull together the facts we have learned. Our play begins with Columbus discovering America and ends with the Pilgrims and Indians Thanksgiving Feast. A time line has been helpful in showing how our country progressed from year to year.

Some of the special projects that we will be working on will include: making a covering for a tepee by sticking yarn in burlap, Indian drums, wampum, necklaces, an Indian village and making Indian and Pilgrim books. Our final project will be our Thanksgiving feast which we will prepare ourselves.

In doing our special activities the skills of reading, writing and math have not been forgotten. Much reading and writing is required in the sewing of our tepee and preparing our Thanksgiving feast.

We want to welcome all our parents to come in and visit us. We will be sending home invitations as to the date and time.

Birthdays this month: Rex Bongo, Martha Koernke and David Dresselhouse.

### Room 5

Teacher: Mrs. Lopez

We have been learning about sound. Many children brought instruments to show. Louise Hoover brought a guitar; Jim Schutte a flute; Clayton Caudill and Carrie Collinsworth brought harmonicas. Carrie played a song for us on her harmonica.

Our Halloween party was lots of fun. Clarence Sparks brought an 80-lb. pumpkin, which was decorated with cartoon characters. We had lots of treats, and do thank our room mothers and all who contributed.

We learned many interesting facts about animals on our trip to the U-M Museum. Many thanks to Mrs. Tarasow, Mrs. Downey, Mrs. Inbody, and Mrs. Hoover for making the trip a success.

November birthdays are being celebrated by Frankie Morales and David Thompson.

### Poster Contest . .

(Continued from page one)

season, and the supply of whole blood has always been helpful. Persons who give blood will receive cards attesting to the amount given.

## District Court Proceedings

### Week of Nov. 4-17

David Ritzler was sentenced to pay \$100 fines and costs on charges of reckless driving.

George Kish pled guilty to charges of speeding. Fines and costs, \$21.

Charles E. Maki was found guilty of driving with a revoked license. Fines and costs, \$75 plus three days in county jail or 20 days.

Robert L. Roberts pled guilty to charges of driving without an operator's license. Fines and costs, \$75.

Gerald D. Kniemert pled guilty to charges of moving a permitted load in the dark. Fines and costs, \$50.

Katherine Elsflore pled guilty to charges of careless driving. Fines and costs, \$34.

Roosevelt Horton, Jr., pled guilty on charges of failing to yield the right of way. Fines and costs, \$21.

Edward A. Sims was sentenced to pay fines and costs of \$100 on charges of the use of marijuana.

Sylvester Williams pled guilty to charges of speeding. Fines and costs, \$43.

Kathleen Palmer pled guilty to charges of speeding. Fines and costs, \$31.

Viola Sanders pled guilty to charges of speeding. Fines and costs, \$27.

Coreen L. Fowler pled guilty to charges of speeding. Fines and costs, \$27.

Anastasio Trevino, Jr., pled guilty to charges of speeding. Fines and costs, \$31.

Jack Roger Suter pled guilty to charges of speeding. Fines and costs, \$23.

William Charleston pled guilty to charges of speeding. Fines and costs, \$23.

Yiesi Sugarawsk pled guilty to charges of no proof of insurance and to charges of no rear license plate. Fines and costs, \$6 on each charge.

Albert Allen pled guilty to charges of speeding. Fines and costs, \$41.

Pauline Lee Buenrostro pled guilty to charges of speeding. Fines and costs, \$45.

Carleen F. Bauer pled guilty to charges of speeding. Fines and costs, \$27.

Jerome H. Jahnke pled guilty to charges of speeding. Fines and costs, \$21.

Michael Lee Roup pled guilty to charges of speeding. Fines and costs, \$21.

Edison Thompson, Jr., was found guilty of charges of driving left of center. Fines and costs, \$31.

Rodney Taylor pled guilty to charges of speeding. Fines and costs, \$23.

Richard Bradshaw pled guilty to charges of speeding. Fines and costs, \$25.

Joan Schmidt pled guilty to charges of speeding. Fines and costs, \$25.

Sara Newton pled guilty to charges of speeding. Fines and costs, \$27.

Dale Corbin was sentenced to pay fines and costs of \$250 and to attend the Alcohol Safety Action program on charges of driving while under the influence of liquor.

Matthew J. McCallum pled guilty to charges of open intoxicants in a motor vehicle. Fines and costs, \$35.

Terry Delong was sentenced to pay fines and costs of \$100 on charges of being drunk and disorderly.

David Justice was sentenced to pay fines and costs of \$100 on charges of being drunk and disorderly.

David Justice was sentenced to pay fines and costs of \$300 and to one year probation on charges of driving while under the influence of liquor.

Steven Benko pled guilty to charges of no registration and no

proof of insurance. Fines and costs, \$21.

Vincent Bono pled guilty to charges of failing to report a property damage accident. Fines and costs, \$16.

Michael St. Charles pled guilty to charges of defective equipment. Fines and costs, \$16.

William Mannier appeared on a bench warrant on charges of being drunk and disorderly. Fines and costs, \$75.

Frank Mannor was sentenced to pay fines and costs of \$75 and to three days in jail or 15 days on charges of never acquiring a Michigan Driver's license.

### CALL OR STOP IN

## CHELSEA GLASS WORKS

WORKMANSHIP AND MATERIALS FULLY GUARANTEED.

Open Daily 8 a.m. to 5 p.m.; Sat. 8 a.m. to 1 p.m.

140 W. Middle, Chelsea

Phone (313) 475-8667

### WE REPAIR AND REPLACE:

- ★ STORE FRONTS
- ★ FURNITURE TOPS
- ★ SHOWER DOORS
- ★ THERMOPANES
- ★ AUTO GLASS - Including Windshields
- ★ MIRRORS
- ★ PATIO DOORS
- ★ TUB ENCLOSURES

Free Pick-up and delivery on auto work.

Storm Door & Window Reglazing & Screens

COMMERCIAL BUILDINGS OR RESIDENTIAL

PROMPT SERVICE

REASONABLE PRICES

## Gifts For All Occasions

- ★ Diamonds
- ★ Opals
- ★ Hallmark Cards
- ★ Watches
- ★ Clocks

★ Expert Watch and Ring Repair

20% OFF  
On All Jewelry

## LEWIS JEWELERS

Maple Village Shopping Center

Maple and Jackson Rds., Across from Fox Theatre

Mon.-Thurs.-Fri. till 9 p.m.

Tues.-Wed.-Sat., till 6 p.m.

Sun. 12 noon till 5 p.m.

Free Parking

Ann Arbor

994-5111

Complete Selection  
Holiday Foods  
For Thanksgiving

Full Line Supermarket  
BEER - WINE - LIQUOR  
LOTTERY TICKETS  
MARATHON GAS PUMPS  
2-CYCO GAS PUMPS  
AUTHORIZED FOOD STAMP STORE

# Jiffy market

Big Enough To

Serve You . . . Small Enough To Know You!

Open 7 Day A Week  
7 a.m. to 10 p.m.  
Corner Sibley & Werkner Rds.  
PHONE 475-1701

U.S.D.A.  
CHOICE  
MEATS

Sale Prices Effective  
Thurs. Nov. 20 thru Wed., Nov. 26

## Guaranteed Satisfaction — Courteous Service

KLEEN-MAID  
BREAD  
3 1/4-Lb. Loaves \$1.00

Fresh Eggs  
U.S.D.A. GRADE A  
MEDIUM SIZE WHITE  
59¢ doz.

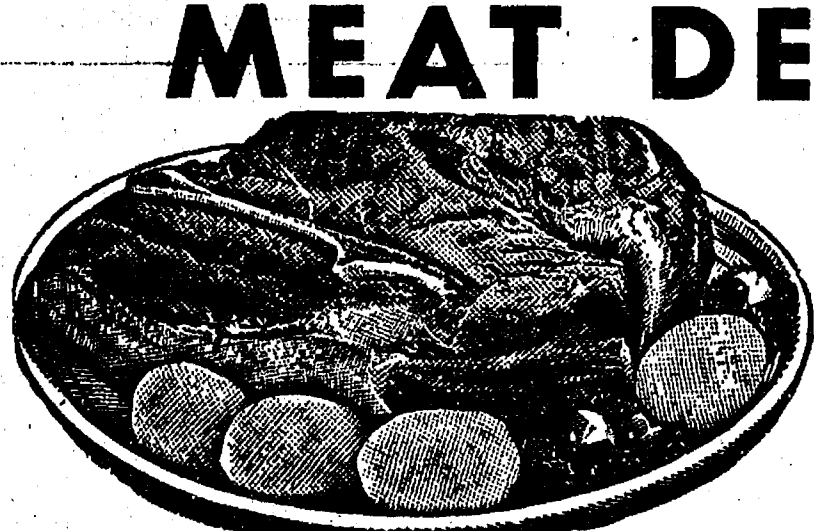
FARM MAID  
HOMOGENIZED  
VITAMIN D  
GRADE A  
MILK  
\$1.27 gal.

JIFFY MARKET  
YOUR BORDEN'S ICE CREAM STORE

Borden's Special for Thanksgiving!



Glacier Club  
ICE CREAM  
Half Gallon for only 79¢

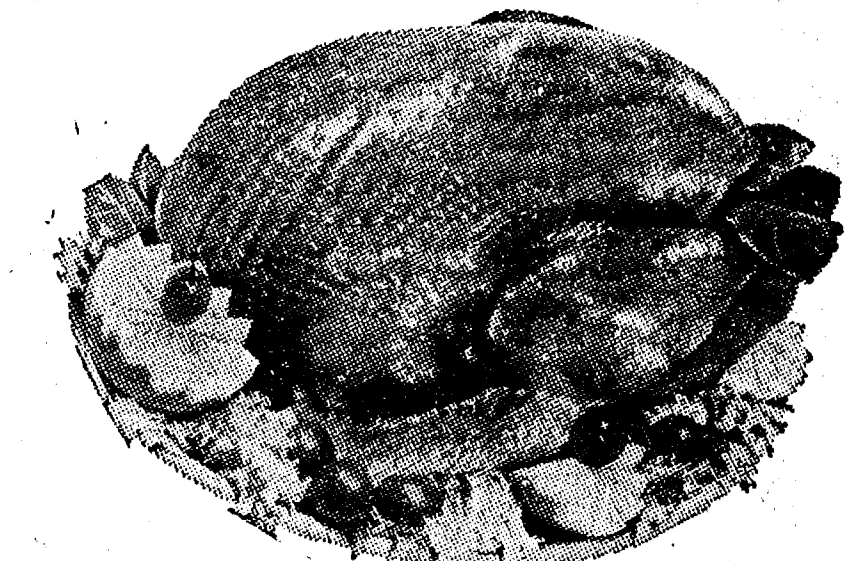


Tender Beef with Flavor!

U.S. Choice Beef Chuck Roast  
BLADE CUT . . . lb. 79¢  
CENTER CUT . . . lb. 89¢  
ARM CUT . . . lb. \$1.19  
ENGLISH CUT . . . lb. \$1.19

### U. S. CHOICE STEAK

T-BONE STEAK . . . lb. \$2.29  
Porterhouse Steak . . . lb. \$2.39  
SIRLOIN STEAK . . . lb. \$1.79  
RIB STEAK . . . lb. \$1.69  
ROUND STEAK . . . lb. \$1.79  
RUMP ROAST . . . lb. \$1.79  
CUBE STEAK . . . lb. \$1.79  
MICHIGAN - THANKSGIVING SPECIAL  
SOUR CREAM . . . 1 pint 49¢



## TURKEY

U. S. GOVERNMENT INSPECTED GRADE A  
Whole Turkey - No parts missing.

12-14 lbs. 69¢ lb.

FULL SELECTION OF TURKEYS  
BUTTERBALL TURKEYS - TURKEY ROLLS  
FRESH OYSTERS - DUCKS - GEESE - ROASTERS

COURTLAND VALLEY  
SAUERKRAUT . . . 2 Lb. Pkg. 39¢  
FRESH GROUND—MADE FROM BEEF  
HAMBURGER . . . lb. 79¢  
FRESH  
BEEF LIVER . . . lb. 49¢  
FRESH HOME MADE  
PORK SAUSAGE . . . lb. \$1.29  
ECKRICH OLD FASHION SMOKED  
ROASTING SAUSAGE . . . lb. \$1.29

LIQUORS - WINES - BEER

## COCA-COLA THANKSGIVING SPECIAL

1 Pint 16-Oz. N.R. Bottles  
EQUALS ONE GALLON  
8 pac \$1.29

## SPECIAL for THANKSGIVING

Your Choice

CANADA DRY MIXERS

The Ever-Popular  
7-UP

The Famous Original  
SQUIRT

Deliciously Different  
VERNOR'S GINGER ALE

Large 28-Oz. No-Return Bottles  
Bottle Case of 12

45¢ \$4.95



## JIFFY'S MARATHON GAS

REGULAR GAS 55.9

Gal. Including All Taxes

Start Your Holiday Trips Here  
With Gas You Can Depend On!

GAS PUMPS & STORE OPEN 7 a.m. to 10 p.m. 7 Days a Week — U. S. Authorized Food Stamp Store — Daily & Sunday Papers



## + Services in Our Churches +

**CONGREGATIONAL CHURCH**  
(United Church of Christ)  
The Rev. Carl Schwarm, Pastor  
Thursday, Nov. 20—  
7:30 p.m.—Choir.  
Sunday, Nov. 23—  
8:00 a.m.—Confirmation.  
10:30 a.m.—Sunday school and worship.  
11:00 a.m.—"Totenfest" Sunday.  
Canned food offering. Commentary articles due.  
Monday, Nov. 24—  
National Day of Fasting.  
Wednesday, Nov. 26—  
7:30 p.m.—Community service of Thanksgiving at Zion Lutheran church.

**OUR SAVIOR LUTHERAN CHURCH**  
1515 S. Main, Chelsea  
The Rev. William H. Keller, Pastor  
Thursday, Nov. 20—  
7:30 p.m.—Choir. Sunday school staff meeting at church.  
Sunday, Nov. 23—  
9:00 a.m.—Sunday school and Bible classes.  
10:30 a.m.—Worship.  
12:00 p.m.—Youth bowling.  
Wednesday, Nov. 26—  
9:30 to 11:30 a.m.—Pre-school story hour.  
No confirmation classes.  
7:30 p.m.—Thanksgiving Eve service.

**WATERLOO FIRST UNITED METHODIST**  
Parks and Territorial Rds.  
Every Sunday—  
9:15 a.m.—Morning worship.  
10:00 a.m.—Sunday school.

**GREGORY BAPTIST CHURCH**  
The Rev. Paul White, Pastor  
Every Sunday—  
9:45 a.m.—Sunday school.  
11:00 a.m.—Morning worship.  
6:00 p.m.—Young people.  
7:00 p.m.—Evening worship.  
7:30 p.m.—Thursday mid-week worship service.

**CHURCH OF JESUS CHRIST OF LATTER-DAY SAINTS**  
Meetings at  
St. Barnabas Episcopal Church  
20500 Old US-12  
Every Sunday—  
11:00 a.m.—Priesthood meeting.  
12:30 p.m.—Sunday school.  
5:30 p.m.—Sacrament meeting.

**BAHA'I FIRESIDE**  
Every Thursday—  
8:00 p.m.—At the home of Toby Peterson, 705 S. Main St. Anyone wishing to learn about the Baha'i faith is welcome.

**LOSE UGLY FAT**  
Start losing weight today or money back. MONADEX is a tiny tablet and easy to take. MONADEX will help curb your desire for excess food. Eat less—weigh less. Contains no dangerous drugs and will not make you nervous. No strenuous exercise. Change your life—start today. MONADEX cost \$3.00 for a 20 day supply. Large economy size is \$5.00. Also try AQUATABS: they work gently to help you lose water-bloat. AQUATABS "water pills" that work—\$3.00. Both guaranteed and sold by:  
CHELSEA DRUG STORE  
101 N. Main St. - Mail Orders Filled

**ST. PAUL UNITED CHURCH OF CHRIST**  
The Rev. R. J. Ratzlaff, Pastor  
Thursday, Nov. 20—  
7:30 p.m.—Church school teachers to Ben Donaldson's home.  
Saturday, Nov. 22—  
9:00 and 10:30 a.m.—Confirmation.  
Sunday, Nov. 23—  
8:00 and 10:30 a.m.—Church school.  
10:30 a.m.—Worship.  
3:00 p.m.—Junior Choir at the Saline Home.  
Tuesday, Nov. 25—  
6:30 p.m.—Joyful Noise.  
6:30 p.m.—XYZ's Thanksgiving dinner.  
Wednesday, Nov. 26—  
7:30 p.m.—Community Worship service at Zion Lutheran.

**FIRST ASSEMBLY OF GOD**  
The Rev. Thode B. Thodeson, Pastor  
Every Sunday—  
9:45 a.m.—Sunday school.  
11:00 a.m.—Worship service.  
7:00 p.m.—Midweek services.  
Every Wednesday—  
7:00 p.m.—Christ's Ambassadors.  
Every Friday—  
1:00 p.m.—Ladies Bible study.

**CHELSEA BAPTIST CHURCH**  
377 Wilkinson St.  
The Rev. James Stacey, Pastor  
Every Sunday—  
9:45 a.m.—Sunday school for the whole family.  
11:00 a.m.—Morning worship service and children's church.  
7:00 p.m.—Evening service, informal singing, sharing, study and discussion. (Nursery care provided for all services).  
Home Bible Studies each week in the homes of the leaders.  
Teen Ministry, Sunday at 6 p.m. and study groups during the week.

**ST. THOMAS EVANGELICAL LUTHERAN**  
Elisworth and Haab Rds.  
The Rev. Jerome Dykstra, Pastor  
Sunday, Nov. 23—  
9:30 a.m.—Sunday school and voters meeting.  
10:45 a.m.—Worship service.

**ST. JOHN'S UNITED CHURCH OF CHRIST**  
Rogers Corners  
The Rev. Carl Asher, Pastor  
10:30 a.m.—Worship service.

**NORTH LAKE UNITED METHODIST CHURCH**  
The Rev. David Stiles, Pastor  
Every Sunday—  
8:30 a.m.—Early service.  
10:00 a.m.—Worship service. Receiving of new members.  
10:00 a.m.—Sunday school.

**WATERLOO VILLAGE UNITED METHODIST CHURCH**  
818 Washington St.  
Every Sunday—  
11:15 a.m.—Worship service.

**METHODIST HOME CHAPEL**  
Chaplain Ira Wood, Pastor  
Every Sunday—  
8:45 a.m.—Worship service.

**FIRST UNITED METHODIST CHURCH**  
Thursday, Nov. 20—  
1:00 p.m.—The Quilting group will meet at the home of Mrs. Mary Kumpf.  
6:30 p.m.—Weight Watchers will meet in the Social Center of the church.  
Sunday, Nov. 23—  
10:00 a.m.—Worship service, nursery provided.  
10:20 a.m.—Church school (four years through the 6th grade).  
11:00 a.m.—Coffee and punch hour.  
11:15 a.m.—Junior-senior high adult church school.  
6:30 p.m.—Christmas dedication.  
Monday, Nov. 24—  
8:00 p.m.—Finance committee will meet in the Litteral room.  
Tuesday, Nov. 25—  
9:00 a.m.—Charismatic Bible sharing group will meet in the educational unit.  
Wednesday, Nov. 26—  
3:30 p.m.—Kinder Choir.  
4:00 p.m.—Gloria Choir.  
4:30 p.m.—Praise Choir.  
8:00 p.m.—Chancel Choir.

**ZION LUTHERAN CHURCH**  
Corner of Fletcher, Waters Rds.  
The Rev. John R. Morris, Pastor  
Thursday, Nov. 20—  
7:30 p.m.—Holy Communion instruction, fifth through ninth grades.  
Saturday, Nov. 22—  
7:30 a.m.—Men's prayer and breakfast.  
9:00 a.m.—Youth instruction, 7th and 8th grades.  
10:45 a.m.—Junior Choir.  
Sunday, Nov. 23—  
9:00 a.m.—Sunday school.  
10:45 a.m.—Worship. Women of Zion thank offering box return service.  
Monday, Nov. 24—  
8:00 p.m.—Senior Choir.  
Tuesday, Nov. 25—  
7:30 p.m.—Shuffleboard.  
Wednesday, Nov. 26—  
7:30 p.m.—Zion hosts the Chelsea Community Thanksgiving eve worship.

**CHURCH OF CHRIST**  
13681 Old US-12, East  
Evangelist John M. Hamilton  
Every Sunday—  
10:00 a.m.—Church school.  
11:00 a.m.—Worship service.  
Nursery will be available.  
8:00 p.m.—Worship service.  
Every Wednesday—  
7:30 p.m.—Bible study.

**ST. MARY CATHOLIC CHURCH**  
The Rev. Fr. David Philip Dupuis, Pastor  
Mass Schedule:  
Every Saturday—  
4:00-5:00 p.m.—Confessions.  
7:00 p.m.—Mass.  
Immediately after 7 p.m. Mass—Confession.  
Every Sunday—  
Winter schedule:  
8:00, 10:00, 12:00 noon—Mass.  
Summer schedule:  
7:00, 9:00, 11:00 a.m.—Mass.

**SALEM GROVE UNITED METHODIST CHURCH**  
3320 Notten Rd.  
The Rev. Gerald R. Parker, Pastor  
Every Sunday—  
9:30 a.m.—Sunday school.  
10:30 a.m.—Worship service.

**FIRST CHURCH OF CHRIST SCIENTIST**  
1883 Washenaw Ave., Ann Arbor  
Every Sunday—  
10:30 a.m.—Sunday school, morning service.

**ST. JOHN'S EVANGELICAL AND REFORMED CHURCH**  
(United Church of Christ)  
Francisco  
The Rev. Virgil King, Pastor.  
Every Sunday—  
10:30 a.m.—Worship service.  
Sunday school.

**FIRST UNITED PRESBYTERIAN CHURCH**  
Unadilla  
The Rev. T. H. Liang, Pastor  
Every Sunday—  
9:45 a.m.—Sunday school.  
11:00 a.m.—Worship service.

**Mobil-Toons**  
By GLENN  
"Perhaps a tank of gas, would help my memory on directions!"  
Come in any time for the best service in town!

**GLENN'S MOBIL SERVICE**  
1622 N-52 & 1-94  
CHELSEA, MICHIGAN  
Phone 475-1767  
GLENN HEIM  
PROP.

**ST. BARNABAS EPISCOPAL CHURCH**  
20500 Old US-12  
The Rev. Fr. Jerrold F. Beaumont, B.S.P.

Every Sunday—  
10:00 a.m.—Holy Communion first, third and fifth Sundays, and 8 p.m. every Wednesday.  
10:00 a.m.—Morning prayer. Second and fourth Sundays. Church school and nursery every Sunday.  
Every Wednesday—  
9:00 p.m.—Study and discussion groups.  
First Wednesday of every month Bishop's Committee.  
Third Thursday of every month—Episcopal church women.

**NORTH SHARON BIBLE CHURCH**  
Sylvan and Washburne Rds.  
The Rev. William Ensten, Pastor  
Every Sunday—  
10:00 a.m.—Sunday school. (Nursery will be available.) Junior church classes.  
11:00 a.m.—Worship service.  
6:00 p.m.—Senior High Youth meeting. Youth Choir.  
7:00 p.m.—Evening worship service. (Nursery available.)  
All services interpreted for the deaf.  
Every Wednesday—  
7:00 p.m.—Bible study and prayer.

or meeting. (Nursery available.) Bus transportation available: 435-7222.

**ST. JACOB EVANGELICAL LUTHERAN CHURCH**  
12501 Riethmiller Rd., Grass Lake  
The Rev. Andrew Bloom, Pastor  
Every Sunday—  
9:00 a.m.—Worship service.  
10:15 a.m.—Divine services.

**IMMANUEL BIBLE CHURCH**  
145 E. Summit St.  
The Rev. LeRoy Johnson, Pastor  
Every Sunday—  
9:45 a.m.—Sunday school, nursery provided.  
11:00 a.m.—Morning worship, nursery provided.  
6:00 p.m.—Evening worship.  
Every Wednesday—  
7:00 p.m.—Family hour, prayer meeting, and Bible study.

**BETHEL EVANGELICAL AND REFORMED CHURCH**  
(United Church of Christ)  
Freedom Township  
The Rev. Roman A. Reineck, Pastor  
Every Sunday—  
10:00 a.m.—Worship service.

Telephone Your Club News To 475-1371.

**Thomas Richmond Promoted at Naval Station in Spain**

Navy Communications Technician Third Class Thomas L. Richmond, son of Mr. and Mrs. Melvin Richmond of 14750 Howlett Rd., Gregory, has been promoted to his present rank while serving at the U.S. Naval Communications Station, Rota, Spain.  
A 1971 graduate of Stockbridge High school, Stockbridge, he joined the Navy in April 1972.

Americans consume some 58 million sandwiches every day.

### O Son of Being!

Ascribe not to any soul that which thou wouldst not have ascribed to thee, and say not that which thou dost not. This is My command unto thee, do thou observe it.

BAHA'I SCRIPTURES.



Thanksgiving has been a tradition, filled with blessings for more than 350 years. One of many is our orchard, the beauty, of which the friendship personalized in good fruit the orchard yields, is our concern for Bicentennial blessings.

Open regularly until Christmas  
Most varieties of apples available at modest prices.  
**NORTH LAKE ORCHARD**  
13260 North Territorial Rd. (5 miles north of Chelsea)  
DR. HARMOND J. WEBB  
Closed on Thursdays Phone 475-2070

# WESTERN AUTO

# 1178 S. MAIN

at

# CHELSEA LANES

# GRAND OPENING

# SALE

**FREE PARKING**  
**PHONE 475-1721**  
**Free Gifts - Free Prizes**  
**Open 9 to 6 Each Day**  
**Except Friday, 9 to 9**  
**GRAND OPENING SPECIALS**

**WIZARD "D" BATTERY . . . . 19¢**

**HANDY OVEN MITT . . . . 44¢**

**PLASTIC UTILITY BUCKET . . . . 66¢**

**WEARWELL MOTOR OIL . . . . 39¢**

**LAUNDRY BASKET . . . . \$1.29**

**WINDSHIELD CLEANER . . . . 99¢**

**Relax On This Luxury 3-Way Pillow-Back Recliner!**  
Soft washable vinyl, foam cushioned!  
Tough hardwood construction!  
Choose avocado, brown or black!

**GRAND OPENING SPECIALS**

**RUST-NAUGHT SPRAY PAINT . . . 99¢**  
23 colors

**SPIN-ON OIL FILTER . . . . \$1.99**

**TRANSMISSION FLUID . . . . 49¢**

**SILVER DUCT TAPE . . . . 99¢**

**5-PC. WRENCH SET . . . . \$1.99**

**1/2 GALLON DECANter . . . . \$1.69**

**Our Finest . . . The Tough One 12-Volt Battery**

• Dependable starting power in all weather!  
• Designed to handle the high demands of today's engines and accessories!

**\$36.88** With Exchange  
For Most 12-Volt Cars!

**Charger 42 12-Volt Battery**

Ruggedly built for power and performance! Plenty of power when you need it!

Sturdy 1-piece polypropylene plastic case resists leakage!  
Fits most '55 to '75 GM, Chrysler, American Motors.

**\$27.88** With Exchange

**No matter what states you visit on vacation "no fault" insurance is no problem.**

If your vacation this year takes you through states with "no-fault" insurance laws, you have no problem — if your auto is protected by Auto-Owners Insurance. Your Auto-Owners policy provides altogether protection automatically under its bodily injury and property damage liability coverages. If you become subject to the laws of a no-fault state. Have a good vacation!

**it's better altogether**

**A. D. MAYER AGENCY, INC.**  
115 PARK ST., CHELSEA  
BOB BARLOW, AGENT  
PHONE 475-2030

**Auto-Owners Insurance**  
Life Home Car Business

**GLENN'S MOBIL SERVICE**  
1622 N-52 & 1-94  
CHELSEA, MICHIGAN  
Phone 475-1767  
GLENN HEIM  
PROP.

**Toyland Is Open - Open Your W.A. Account Today**



## Conlin's Visit ...

(Continued from page one)

last year. The fund is also handled by veterans and these same people believe that if the state were to take it over, it would be mismanaged and result in more money for the veteran in need of the money. The veterans added they would be willing to lend funds to the state as they have in the past.

Conlin listened to the veterans, remarking that up until then he had not had any feedback on the situation.

Other issues briefly covered during the meeting were state education programs, the graduated income tax, the Huron Clinton Metropolitan Authority, lobbyists, the DNR and the possible abolishment of the Michigan Youth Conservation Corps.

For constituents who wish to write Conlin they may do so by sending correspondence to Michael Conlin, State Capital Building, Lansing.

## Charlie Brown & Snoopy's Friends Peanut League

Standings as of Nov. 13

|   | W     | L      |
|---|-------|--------|
| Super Stars   | 18    | 6      |
| Bowling Green   | 15    | 9      |
| Super Strikers  | 9 1/2 | 14 1/2 |
| PinWheels   | 8     | 16     |
| Snoopies  | 7 1/2 | 16 1/2 |
| Games 70 and over: C. Schulze, 71; J. Tobin, 75; 76; D. Detting, 121; 106; S. Cheever, 75; J. Morgan, 76; D. Settle, 128; 119; G. Bollinger, 76; L. Kaiser, 72; D. Thompson, 70; 92; J. Schaefer, 87; 84; K. Nadeau, 104; 87; D. Collins, 74; H. Morrell, 95; 76; P. Fletcher, 101; 72. |       |        |
| Series 100 and over: C. Schulze, 118; J. Tobin, 151; D. Detting, 227; J. Morgan, 105; S. Cheever, 123; J. Morgan, 144; D. Settle, 247; G. Bollinger, 130; L. Kaiser, 133; E. Brown, 114; D. Thompson, 162; J. Schaefer, 181; C. Bollinger, 119.   |       |        |



## Wyler Raised coin-struck POCKET WATCH

Vests are in style! Pocket watches are fun... worn with or without chains. But his Signal Wyler is more than fun/fashion. It's a superb timekeeper you can rely on and show off. Spring-oven cover reveals a smart Victorian face with classic arabic numerals and a second dial. Shown: Fishing scene, also available hunting scene, both deeply die-struck. In white or yellow. True beauty for ONLY \$69.95.

## WINANS JEWELRY

Professional Wyler Jeweler

## Remember Mama

(Continued from page one)

the family who wants to become a doctor; Judy Powers (Karin) as the oldest daughter, who is the narrator and center of the story; poignant through her adolescent longing for a fancy dresser set like the ones owned by her more affluent schoolmates.

Penny Kincer and Jenny Bott will portray two younger daughters (Christine and Dagmar), and Dennis Petach (Uncle Chris) a ferocious-seeming uncle of these youngsters, of whom it is whispered out of earshot of the youngsters, that he is "living with a woman."

Other key roles in "I Remember Mama" are being played by Sue Frisbie, Kathleen Treado, Sue Leach, Doug Beaumont, and Steve Hovater (Aunts Jenny, Sigrid, and Trina; Mr. Thorkelson and Mr. Ryde).

Tickets will be on sale at the high school before each performance.

## SCHOOL LUNCH MENU

Week of Nov. 24-28

Monday — Sloppy Joes with cheese, buttered vegetable, tater tots, rice pudding with fruit and milk.

Tuesday — Hamburgers and buns with trimmings, green beans with mushrooms, oven potatoes, whipped Jell-O, crunchy peanut butter squares and milk.

Wednesday — First Thanksgiving Plymouth turkey, cranberry bog gelatin salad, massasoit dressing, Miley Standish potatoes, pilgrim's pumpkin pie and may-flower milk.

Thursday — No school.

Friday — No school.

**CARD OF THANKS**  
I would like to thank all of my relatives, friends and neighbors for their kindnesses, cards, gifts and visits. Everything was appreciated.  
Henry Buss.

## IN MEMORIAM

In loving memory of my dear husband and our father, Mr. Frank L. Reed, who passed away four years ago on the 23rd of November, 1971. Your gentle face and patient smile with sadness we recall. You had a kindly word for each and died beloved by all. The voice is mute and still the heart that loved us well and true. All bitter was the trial to part, from one so good as you. You are not forgotten, loved one, nor will you ever be. As long as life and memory last we will remember thee. We miss you now our hearts are sore, as time goes by we miss you more and more. Your loving smile your gentle face no one can fill your vacant place.  
Sadly missed by his wife, children and grandchildren.

## CARD OF THANKS

The family of Margery Louise Trinkle wishes to express their deep appreciation for the love and sympathy extended to us by friends, neighbors and relatives. God Bless you all.  
Mr. and Mrs. Ralph Trinkle, and Daniel and Debbie.

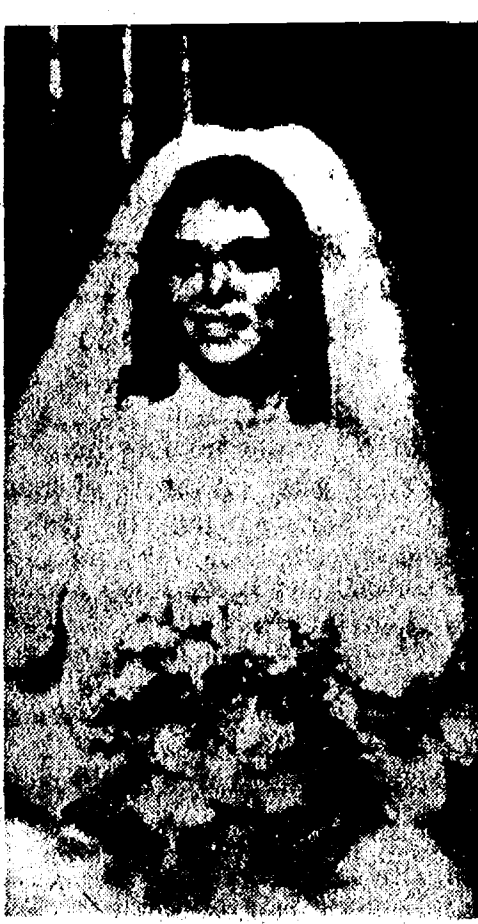
Persons suffering from unrelieved hearing losses are seldom shown the concern extended to individuals with other types of handicaps because a hearing loss is not a visible impairment, according to hearing specialists. How such hearing losses are suffering from very real physical disabilities.

## Magic Mirror Beauty Salon

Open Tuesday thru Friday 9 a.m. to 9 p.m., Saturday, 8 a.m. to 3 p.m.

PHONE 665-0816

## Connie Wireman, Robert Salyer Wed at Methodist Church



Mrs. Robert A. Salyer

Connie Lynn Wireman and Robert Alan Salyer spoke their wedding vows Saturday, Nov. 1 before 250 guests at the Chelsea United Methodist church. The Rev. Ira Wood of the Chelsea Methodist Home presided over the ceremony uniting the daughter of Mrs. Grace Wireman of 20100 Brown Dr. and Mr. Seidon Wireman of Chelsea and the son of Mrs. Roma Salyer of 181 E. Middle St. in marriage. The bridegroom's brother Howard, and Kathy Treado sang "Colour My World" and "The Wedding Song" during the ceremony.

For her wedding to Mr. Salyer, the former Miss Wireman chose a gown of white tulle with sheer bishop sleeves and lace appliques adorning the tucked bodice, sleeves and cuffs. An elbow-length illusion veil with lace trim was held in place by a matching lace Camelot cap. The bride carried a bouquet of white carnations, apricot roses and baby's breath.

Serving as maid of honor was Miss Angie Eder of 555 Taylor Lane. She was dressed in an apricot colored gown with brown velvet lapels. She carried one long-stem rose.

Bridesmaids were Mrs. Pat Wieneke, the bride's sister of Boston, Mass.; Miss Kimberly Wieneke, sister of the bride of Chelsea; Miss Darlene Davis, the bride's cousin of Chelsea and Miss Mary Davis, also a cousin of the bride of Kentucky. They were dressed in long apricot gowns with brown velvet jackets. As the maid of honor, each bridesmaid carried one long-stem rose.

For her daughter's wedding, Mrs. Wireman chose a long turquoise colored gown and pinned a corsage of white roses to her gown. Mrs. Salyer was dressed in a long black and white dress. She pinned an identical corsage to her shoulder.

Also attending the couple were the bridegroom's niece, Miss Amy Lynn Koengeter of Chelsea, and the bride's nephew, Christopher Wieneke of Boston. The bridegroom's uncle, Gerald Wenk of Chelsea served him as best-man. Ushers were the bride's brother, Steven Wireman, Howard and Rodney Salyer, brothers of the bridegroom, of Chelsea, Randy Davis and John Brown, cousins of the bride.

A reception immediately following the ceremony was held at the UAW Hall. The couple honeymooned in Toronto and are now at home at 131 E. Middle St.



## CUB SCOUT NEWS

**DEN 15, PACK 435**  
We met Thursday Nov. 13 at Mrs. Martin's house. This week we played ring toss and Kurt Eisenbeiser came in first and won a stick of gum. We made a leather-like skin trophy to hang in our room. We practiced our Thanksgiving skit. Then we had our treat and then we played football outside.  
Eric Stofflet, scribe.

## 4-H Clubs

**TERRIFIC TAILORS**  
Terrific Tailors 4-H Club opened the new year with a Halloween supper and the election of new officers on Oct. 30. New officers are Sue Heller, president; Nancy Heller, vice-president; Beth Bush, secretary; Mary Anderson, treasurer; historian Sue Inglis and reporter, Linda Bristle.

On Nov. 13, the club met with their mothers and leaders, Mrs. Hughes and Mrs. Anderson. We talked about different types of materials with some good and bad plints about different fabrics. The leaders also told us the rules for judging a garment at spring achievement.

Our next meeting will be held Dec. 6 at the Lima Town Hall when we are to have our patterns and material pre-shrunk.  
Linda Bristle, reporter.

## PERSONALS

Mrs. Gary (Linda) Ellenwood of 500 Clear Lake Rd., flew to Anchorage, Alaska, Tuesday, Nov. 18 where she will be met by her uncle, Douglas Lewsader, where she will seek employment. She expects to be joined later by her husband, Gary. She is the daughter-in-law of Mrs. Wesley Ellenwood and the late Mr. Ellenwood.

Dehydrated potatoes sustained people in the Andes long before the first European had ever tasted the tubers. Potatoes were preserved by repeatedly squeezing out the water and exposing them to the sun and frost.

## Waterloo Ladies Aid Plans Christmas Party

Eight members of the Waterloo United Methodist church Ladies Aid Society were present for the Nov. 12 noon pot-luck at the home of Isabelle Coulter.

The meeting was opened by President Eloise Schultz with prayer. A Thanksgiving devotion was read as well as one card of thanks. The treasurer's and secretary's reports were read and approved.

Mary Clark made Thanksgiving turkey decorations for the six shut-ins. Vera Riethmiller donated a Christmas tree for the church. Four members went to Lansing Nov. 4 to attend the West Michigan Conference. A birthday card was sent to Helen Beeman and a thank offering was taken for McCurdy school.

The meeting was closed with the benediction and the only Bible verse for x was found in an old edition.

The group will meet Dec. 10 for a Christmas party at the home of Eloise Schultz. There will be a drawing for an afghan, two pillows and a bun warmer.



## GIRL SCOUTS

**TROOPS 442, 82**  
Mrs. Boyd came in and taught us how to make stuffed pillows, stuffed puppets and bean bags for the social services. She will come back next week. Carla Tittzenmaier brought treats.  
Amy Eisenbeiser, scribe.

**TROOP 169**  
Brownie Troop 169 met Monday at the Methodist church. We made centerpiece from dried wheat for Thanksgiving. Next week we will have our Thanksgiving party.  
Jennifer Lindsay, scribe.

## TROOP 719

We held a Court of Honor and talked about different troop jobs and how to do them. We have three patrols this year. The puppy dog patrol has Corrina Romine for a leader and Kim Smith as the assistant. The leader for the Love Bugs is Shelley Wheaton with Gretchen Vogel as assistant. The Panda patrol is led by Dee Dee Hammel and Kim Kleis. Troop treasurer is Lisa Nix and Kim Smith is scribe. We will change jobs every two months so everyone in the troop will have a turn. Next week we will be making pine cone turkeys. We are thinking about our Christmas plans. Joellen Bell brought treats and we closed our meeting with taps.  
Kim Smith, scribe.

## TROOP 689

Girl Scout Troop 689 met last Wednesday, Nov. 12. We made Pilgrim and Indian faces out of gourds and yarn. Beth Heller brought treats.  
Beth Heller, scribe.

## VIVIANE WOODARD COSMETICS

475-8785

Dorothy Ortbring, Director

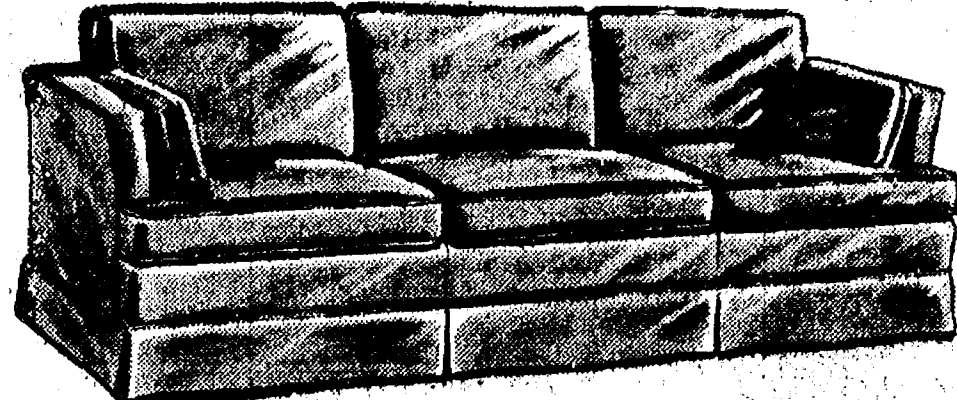
## Sarah Coventry Jewelry

Norma Jean Smith  
Phone 475-8984

# PRE-HOLIDAY FURNITURE SALE

All in-stock merchandise for immediate delivery at savings up to 1/3! Many 1-of-a-kind items. Shop early for best selection. Partial listing below.

## SOFAS - LOVESEATS - CHAIRS



**Modern Room Divider Sofa Group**—High back pillow sofa and 2 storage ottomans, blanket plaid Herculon, beige and natural. Reg. \$789.95.  
**Sale \$499.90**

**Oak frame Modern Sofa**—natural finish, gold and olive tweed seat and back cushions. Reg. \$706.00.  
**Sale \$499.90**

**Modern Pillow-back Sofa**—brown velvet upholstery with co-ordinated back pillows. Reg. \$399.95.  
**Sale \$299.90**

**Corner Sectional Sofa by Franklin**—Comfortable, pillowback in beige plaid. Reg. \$1230.00.  
**Sale \$899.90**

**Casual Pine Family Room Group**—natural pine frame, reversible cushions, sofa and loveseat in rust and brown stripe, lounge chair in rust tweed. End table, corner table and coffee table. Reg. \$1195.00.  
**Sale \$799.90**

**Corner Sectional Sofa by Selig**—modern pillowback design in hunter green velvet, soft and so comfortable. Reg. \$839.00.  
**Sale \$599.90**

**Tufted Chesterfield Sofa**—glove sofa vinyl in sable brown, roll arms. Reg. \$399.95.  
**Sale \$299.90**

**Traditional Sofa by Pennsylvania House**—beige and brown stripe, tufted arms, pillow back. Reg. \$599.95.  
**Sale \$399.90**

**Traditional Sofa by Henredon**—Pillow-back style, gorgeous tapestry upholstery in green and rust shades. Reg. \$1046.00.  
**Sale \$799.90**

**Crescent Sofa by Henredon**—Buttoned back in elegant wedgewood blue antique velvet. Reg. \$889.95.  
**Sale \$699.90**

**Pillow-back Loveseat by Henredon**—Beautiful and luxurious in cotton print, rust background with blue and gold. Reg. \$788.00.  
**Sale \$499.90**

**Tuxedo Sofa by Henredon**—Traditional pillowback with arm bolsters. Handsome striped tapestry covering in gold and brown. Reg. \$1099.00.  
**Sale \$899.90**

**Quilted Traditional Sofa**—one of Franklin's best styles, dark green background, with yellows and golds. Reg. \$660.00.  
**Sale \$499.90**

**Tuxedo Sofa by Franklin**—Pillow-back and arms, elegant striped upholstery in natural and toast. Reg. \$614.00.  
**Sale \$499.90**

**Traditional Sofa by Pennsylvania House**—Soft velvet covering in stripes of yellow, green and white. Reg. \$599.00.  
**Sale \$449.90**

**Traditional Sofa by Conover**—Tuxedo style with pillow back and bolsters. Fresh and versatile tapestry in gold, green and rust. Reg. \$659.00.  
**Sale \$399.90**

**Curved Back Sofa by Rowe**—Traditional with pillow back, durable tapestry in gold and rust. Reg. \$399.95.  
**Sale \$299.90**

**Colonial Loveseat by Pennsylvania House**—Wing back with dark pine accents, durable plaid covering in red, blue and natural. Reg. \$480.00.  
**Sale \$349.90**

**Early American Wing Sofa**—Stretch out on this pillow arm style by Conover, covered in tweed stripes in red and gold. Reg. \$584.00.  
**Sale \$499.90**

**Early American Loveseat by Pennsylvania House**—Pine accented wing back, durable tweed covering of rust tweed - cozy! Reg. \$445.85.  
**Sale \$349.95**

**Colonial Wing Sofa by Franklin**—Comfortable high back and pillow arms, long wearing gold tweed upholstery. Reg. \$902.00.  
**Sale \$399.90**

**Traditional Loveseat**—Pennsylvania House, pillowback style, rugged tweed in amber gold. Reg. \$395.00.  
**Sale \$299.90**

**Early American Wing Back Sofa**—A most popular '80's model by Conover. Toast nylon tweed. Reg. \$449.00.  
**Sale \$379.90**

**Conover Wing Back Sofa**—Handsome in Herculon plaid in shades of green. Reg. \$527.00.  
**Sale \$399.90**

**Traditional Sofa**—A popular design by Franklin in tapestry of gold on natural, 86" long. Reg. \$449.00.  
**Sale \$349.90**

**Traditional Sofa**—A versatile style by Pennsylvania House for living or family room, covered in durable stripe of blue and natural. Reg. \$599.95.  
**Sale \$499.90**

**Pillow Back Sofa**—Traditional design from Pennsylvania House, matching arm bolsters, tapestry covering in gold and brown. Reg. \$599.95.  
**Sale \$499.90**

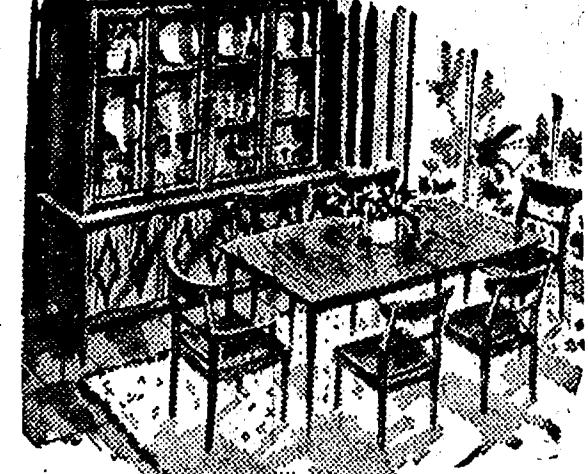
**92" Traditional Sofa**—A Franklin classic in beige tweed with caramel welts. Reg. \$781.00.  
**Sale \$599.90**

**High Back Wing Chair**—Pennsylvania House with Queen Anne legs. Quilted print covering, scenic design in gold and brown. Reg. \$398.00.  
**Sale \$249.90**

**Traditional Lounge Chair**—Classic skirted model in durable stripes of blue and green. Reg. \$289.00.  
**Sale \$199.90**

**Leather Wing Chair**—The real thing in chippendale design, avocado green. Reg. \$462.00.  
**Sale \$349.90**

**Modern Lounge Chair**—Selig high back design in natural stripes, nice. Reg. \$219.95.  
**Sale \$159.90**



## DINING ROOM FURNITURE

**Contemporary Dining Room**—8-pc. group in pecan, large china cabinet, rectangular extension table, 4 side chairs, 2 arm chairs. Reg. \$1599.00.  
**Sale \$999.90**

**Server to match with black plastic top.** Reg. \$276.50.  
**Sale \$199.90**

**Cotswold Oak by Conant Ball**—English country style 8 pc. set, sideboard with open hutch top, trestle extension table, 4 side chairs, 2 arm chairs, gold tweed seats. Reg. \$1533.00.  
**Sale \$1099.90**

**Game Table and Chairs**—Solid oak pedestal table, 4 Windsor armchairs. Reg. \$1037.00.  
**Sale \$599.90**

**Early American 8-pc. Set**—Solid maple in dark pine finish, buffet with china top, oval extension table with plastic top, 4 high back side chairs, 2 arm chairs. Reg. \$1381.00.  
**Sale \$999.90**

**Pennsylvania House Pine**—Rustic, dark finish, 60" buffet and hutch, 48" round extension table with plastic top, 2 duxbury armchairs, 2 side chairs. Reg. \$1823.00.  
**Sale \$1199.00**

**Modern Buffet in Pine**—Golden finish with black hardware, 4 doors, drawer storage behind, by Lane. Reg. \$439.95.  
**Sale \$299.90**

**Swivel Lounge Chair**—A modern high back model, rust textured upholstery. Reg. \$229.00.  
**Sale \$159.90**

**Lounge Chair and Ottoman**—Modern man's size with pillow back covered in pumpkin Herculon tweed. Reg. \$338.00.  
**Sale \$249.90**

**Collector's Wing Chair**—A high back Queen Anne beauty in genuine crewel embroidery. Multi color on natural. Reg. \$599.00.  
**Sale \$399.90**

**Leather Wing Chair**—A collector's classic, tufted chippendale style, antiqued amber color. Reg. \$795.00.  
**Sale \$499.90**

**Reclining Chair and Ottoman**—Comfort and ease in black glove-soft vinyl. Reg. \$399.00.  
**Sale \$259.90**

**Traditional Lounge Chair**—Rust nylon upholstery by Franklin. Reg. \$249.95.  
**Sale \$179.90**

**Pillowback Chair**—Pennsylvania House traditional style, melon jacquard covering. Reg. \$339.00.  
**Sale \$249.90**

**Swivel Rocker**—Quilted print covering with rust background, by Pennsylvania House. Reg. \$285.00.  
**Sale \$199.90**

**Men's Lounge Chair and Ottoman**—Pillow soft and pitched for comfort, antique green vinyl. Reg. \$289.95.  
**Sale \$199.90**

**Platform Rocker for Family Room**—Pine frame with reversible seat and back in red tweed. Reg. \$229.00.  
**Sale \$159.90**



## BEDROOM FURNITURE

**Colonial in Solid Maple**—Spacious triple dresser, landscape mirror, 6 drawer chest, full size Cannonball bed. Reg. \$999.00.  
**Sale \$699.90**

**English Oak by Thomasville**—Triple dresser with twin mirrors, high chest with doors, Queen size headboard, 2 drawer night stand. Reg. \$1124.00.  
**Sale \$799.90**

**Country French in Oak by Thomasville**—9-drawer triple dresser and mirror with carved frame, 5 drawer chest, decorative Queen size headboard, 2 drawer night stand. Reg. \$1124.00.  
**Sale \$1199.95**

**Contemporary Pine by Lane**—Warm, mellow finish, distinctive black hardware, triple dresser and mirror, 5 drawer chest, panel headboard, night stand with attached Chereal mirror. Reg. \$1285.00.  
**Sale \$899.90**

**Far East Design in Pecan**—Formica tops, dresser and framed mirror, 5 drawer chest, bamboo queen headboard, 2 drawer nightstand. Reg. \$679.00.  
**Sale \$499.90**

**Early American Pine by Thomasville**—Rich, antique finish, triple dresser with twin mirrors, chest on chest, cannonball spindle headboard, 3 drawer nightstand. Reg. \$1307.00.  
**Sale \$999.90**

**Modern Walnut by Lane**—Clean lines, rich, dark finish, double dresser and mirror, 5 drawer chest, panel headboard, 2 drawer nightstand. Reg. \$750.00.  
**Sale \$549.90**

**Contemporary Pecan**—Spacious triple dresser with doors and drawers, mirror, queen size headboard. Reg. \$487.00.  
**Sale \$299.90**

**Ultra Modern by Founders**—Rich walnut with chrome accents, triple dresser and mirror, 7 drawer chest, panel headboard, door night stand. Reg. \$1079.00.  
**Sale \$699.90**

**Casual Contemporary by Thomasville**—Natural pine, triple door dresser and twin mirrors, armoire chest, king size panel headboard, 2 drawer night stand. Reg. \$1099.00.  
**Sale \$799.90**

**Natural Pine**—triple dresser and mirror, 5 drawer chest, panel headboard, 2 drawer nightstand. Reg. \$829.00.  
**Sale \$599.90**

**Early American Honey Pine**—Triple dresser with hutch mirror, Armoire chest, queen size yoke bed. Reg. \$1495.00.  
**Sale \$1099.90**

# MERKEL Home Furnishings



## Community Calendar

Modern Mothers Child Study Club Tuesday, Nov. 25 at Chelsea High School, Room 209. Speaker, Joe Rossi. Bring craft form and three dozen cookies.

Young Homemakers Thursday night at Barbara Wotfoeng's. Bring your Christmas gifts.

United Way Recognition pot-luck dinner Thursday, Nov. 20, 6:30 p.m. at the Fairgrounds Service Center.

Thursday, Nov. 20, 7:30 p.m., high school band room, important meeting for parents who have children planning to attend band camp next summer.

Next meeting of the Washtenaw Genealogical Society will be held at the Manchester Library, 202 W. Main St., Manchester, Sunday, Nov. 23 at 2:30 p.m. Subject: Oral History—how to record interviews and the uses to be made of the information which may be obtained. Lydia Muncy will speak. Need help making out your genealogical charts? Come at 1:30 before the meeting. Bring your records. Members will be present to assist you.

VFW Auxiliary 4076 annual bazaar and bake sale Dec. 5 and 6 at their meeting halls 105-B, N. Main St. Friday from 9-5 p.m.; Saturday from 9-1 p.m. adv 21

Chelsea Jaycees Annual Blood Drive for holiday accident victims will be held Saturday, Dec. 20, Contact Howard O'Dell at 475-8190, Bob Meyer at 475-1277, or Bob Ponte at 475-9191, if you care to donate blood.

Chelsea Child Study Club presents "Christmas Bazaar" Saturday, Dec. 6 from 9 a.m. to 3 p.m. at the Sylvan Town Hall, Chelsea. Baked goods and hand-made Christmas items will be on sale. advx25

St. Mary's Altar Society Thanksgiving and Christmas Bazaar and Bake Sale. Saturday, Nov. 22, 9:30 a.m. to 5 p.m., in the Sylvan Town Hall. adv 21

Plant and Pot salad luncheon, Thursday, Nov. 20, 12:30 p.m., North Lake United Methodist church. For tickets call 475-7388. adv x22

St. Mary annual Fall Dance, Saturday, Nov. 22, 9 a.m., Chelsea Rod and Gun Club. Music by The Researchers. Tickets \$7.50 a couple, available at Merkel's, Chelsea Drug. adv 23

Chelsea Jaycees first Tuesday of every month. Board meeting, fourth Tuesday of every month at Chelsea Lanes. Meetings begin at 7:30 p.m.; guests are welcome.

Chelsea Community Farm Bureau, Thursday, Nov. 13, 7 p.m. Pot-luck supper at the home of Mr. and Mrs. George Brettschneider, with Mr. and Mrs. Dorr Whitaker assisting hosts.

The Bookmobile from the Washtenaw County Library will stop weekly on Wednesdays from 4:15 to 4:45 p.m. at the North Lake Methodist church. From 5 p.m. to 5:30 p.m. Wednesdays, the bookmobile will be at the Cavanaugh Lake Store.

Dexter-Chelsea La Leche League meeting Nov. 24, 8 p.m., at the home of Mrs. Marvin Fischer, 3044 N. Lima Center Rd., Dexter. Topic: "The Baby Arrives."

Farm Bureau Square Dance, Nov. 22, 8:30 p.m. Farm Council bld., Saline-Ann Arbor Rd. Luke Schaible's Band. Good food, \$7 per couple. Public invited. advx23

Notice to Hunters. Hot coffee and donuts will be available at the First United Methodist Church of Waterloo, corner of Park and Territorial Rd., all day Saturdays through the deer hunting season.

Inquiries regarding the Chelsea blood bank may be directed to Harold Jones in the event that Mrs. Dudley Holmes is unavailable, or to Robert Meyer, American Red Cross in Ann Arbor, 971-5300.

St. Mary's Parish Cookbooks will be on sale at the Altar Society Bazaar and Bake Sale, Nov. 22 at 9:30 a.m. at the Sylvan Town Hall. adv 21

Ann Arbor Art Association is sponsoring a show of paintings by Priscilla Garm, Ann Arbor resident and graduate of the Boston Museum School, at the Ann Arbor public library, 349 S. 5th in the meeting room. Exhibit open during library hours, Nov. 3-28.

Congressman Bob Carr's Mobile Office Van will be in Chelsea from 12 noon to 1:30 p.m., Monday, Dec. 22.

Weekly Tuesday Nite Singles Club, dance, 9 p.m. to midnight, Ann Arbor, with live band.

Humane Society of Huron Valley has dogs and cats for adoption. Owners may reclaim their lost pets. Phone 662-5585. Open from 9 a.m. to 5 p.m. daily; Sunday, 1 p.m. to 5 p.m. 100 Cherry Hill Rd., quarter-mile south of Plymouth Rd. at Dixboro.

Pap tests are free for all area women, Tuesday mornings, at St. Joseph Mercy Hospital, Ann Arbor. Call American Cancer Society office, 668-8857 for appointment.

Sylvan Township Board, meeting the first Tuesday of the month, at 7 p.m., at Sylvan Township Hall.

Lamaze Association of Ann Arbor is now holding classes at the Chelsea Community Hospital. If interested, call 761-4402, or 475-9316.

American Legion and Auxiliary hospital equipment available by calling Guy Freysinger at 475-1961.

Senior Citizen Fun Nite every Friday evening at 7:30.

Chelsea Home Meal Service delivers one hot meal a day to elderly and disabled living in the Chelsea area. For information call 475-8014 or 475-2923.

Chelsea Co-op Nursery applications for 1975-76 classes are now being taken. For information, call Jeannette Mull, 426-8822 or Leslie Bowers, 475-1401. advx121

Subscribe today to The Standard!

## DEATHS

### John C. Curtis Waterloo Area Resident Dies at Ann Arbor Hospital

John C. Curtis, 53, of 4074 Clear Lake Rd., Grass Lake, died Friday, Nov. 14 at St. Joseph Mercy Hospital, Ann Arbor, after a long illness.

Mr. Curtis was born May 21, 1922 in Washington, D.C., a son of John and Lucile Conlin Curtis. He had served in the U.S. Navy during World War II, and was married to Pauline Molner on Jan. 15, 1966. She survives.

He was a member of the Veterans of Foreign Wars. Also surviving is a son, John C. Curtis, both of Lancaster, O.; two sisters, Mrs. Nicholas (Irene) Evans of Melbourne Beach, Fla., and Mrs. Joseph (Audrey) Jones of Olney, Ill.; and a stepson, Ronald Butler of Riverview; three grandchildren; several nieces and nephews.

A funeral mass was conducted at 11 a.m. on Monday, Nov. 17 at St. Mary Catholic church with the Rev. Fr. Philip Dupuis officiating. Burial followed in Mt. Hope Cemetery, Waterloo. Arrangements were made by Burghardt Funeral Home.

### George H. Clouse Had Operated Shoe Repair Business Until Retirement

George (Jack) H. Clouse of 128 Van Buren St., died Nov. 17 at St. Joseph Mercy Hospital, Ann Arbor.

He was born March 6, 1913 in Pierceton, Ind., the son of George and Lydia Curtis Clouse. He married Louise Kopp May 1, 1943. She survives. The couple lived in Elkhart, Ind., before coming to Chelsea 14 years ago. Mr. Clouse was in the shoe repair business until 1969, retiring because of poor health. He was a member of St. Paul United Church of Christ.

Besides his widow, he is survived by one daughter, Mrs. Mark (Marie) Schulze and one grandson Mark J. Schulze of Chelsea; an aunt, Mrs. Lonnie Curtis of Pierceton, Ind., several nieces and nephews. He was preceded in death by four brothers and three sisters.

Funeral services will be held Friday, Nov. 21 at 1 p.m. at St. Paul United Church of Christ with the Rev. Ralph J. Ratzlaff officiating. Burial will follow in Oak Grove Cemetery.

Contributions may be made to St. Paul's church in Mr. Clouse's name. Friends may call at the Staffan Funeral Home.

Telephone Your Church News To 475-1371.

### Mrs. Charles Carty Was Long-Time Volunteer Worker at VA Hospital

Mrs. Charles (Iza) M. Carty of 151 Park St., died Nov. 17 at the Chelsea Community Hospital. She was born Jan. 3, 1897 in Sylvan township, the daughter of Oliver and Carrie Beckwith Cushman. She was married to Raymond Jones.

Later she married Charles Carty on Nov. 8, 1930. Mr. Carty died April 25, 1971.

The Cartys lived in Coleman where they ran a family grocery store until they moved to Chelsea in 1943. Mrs. Carty was employed with Federal Screw Works during World War II. She worked for many years as a volunteer at the Veteran's Hospital in Ann Arbor accumulating 15,000 hours of volunteer work. She was a member of the DAV, the VFW Auxiliary and the Eagles.

She is survived by a son, Roy Jones of Columbus, O., and one daughter, Mrs. Kenneth (Ruth) Caldwell of Phoenix, Ariz., four grandchildren and two great-grandchildren; two brothers, Warren Cushman of Chelsea and Ray Cushman of Pontiac. One brother and two sisters preceded her in death. Funeral services will be held today Thursday, Nov. 20 at 2 p.m. at the Staffan Funeral Home with Pastor Richard Wheeden officiating.

Burial will follow in Oak Grove Cemetery.

### Mrs. William Osborne Dies Friday at Hospital Following Extended Illness

Mrs. William (Evelyn) Osborne, 50, of 18 Sycamore Dr., died at Chelsea Community Hospital on Friday, Nov. 14 after an extended illness.

Mrs. Osborne was born in Chelsea on Oct. 31, 1925, a daughter of Hazen and Irene Vall Lehmann. She married William Osborne on Feb. 22, 1947. They moved to their present address 10 years ago. Mrs. Osborne had been a member of St. Paul United Church of Christ for many years.

Surviving are her husband, William P. Osborne, a son, Gregory Osborne, at home, and a daughter, Mrs. Robert (Sandra) Allen of Island Lake, two grandchildren, Erin and Charity Allen, also of Island Lake; her parents, Mr. and Mrs. Hazen Lehmann of Chelsea; two brothers, Gerald Lehmann of Falls Church, Va., Mrs. Norman (Jeanette) Colvia of Grass Lake, Mrs. Dwayne (Eunice) Dancer of Munith, and Mrs. Michael (Karen) Balke of Cavanaugh Lake; several nieces and nephews. A son, William Kirk Osborne, preceded her in death in 1950.

A memorial service was held at

2 p.m. on Sunday, Nov. 16 at St. Paul United Church of Christ, with the Rev. Ralph J. Ratzlaff officiating. The family suggests that those who would care to, may make contributions to the American Cancer Society in Mrs. Osborne's memory. Arrangements were made by Burghardt Funeral Home.

### Mrs. Alvin J. Reinhardt Dies Friday at Nursing Home After Long Illness

Mrs. Alvin (Rose Mary) Reinhardt, 54, of 10001 Joslin Lake Rd., Lyndon township, died Friday, Nov. 14, at a private nursing home in the area, after an illness of many years. Born on Jan. 17, 1921 in Lima township, she was a daughter of Gottlieb and Elesia Kopp Bollinger. She married Alvin J. Reinhardt on Dec. 11, 1941. He survives. They lived all of their married life at the farm home on Joslin Lake Rd.

Mrs. Reinhardt was a life member of the First Congregational church of Chelsea and a member of Olive Chapter No. 108, Order of Eastern Star of Chelsea.

Surviving besides her husband are two sons, Malcolm Reinhardt, at home, and Kenneth Reinhardt, of Ann Arbor, as well as one grandson, Jerry Reinhardt of Ann Arbor. Also surviving are two brothers, Paul Bollinger of Chelsea and Oscar Bollinger of Ann Arbor, as well as several nieces and nephews. She was preceded in death by a brother, Wilbur Bollinger in 1971 and two grandchildren.

Funeral services were held on Monday, Nov. 17 at 2:30 p.m. at the Burghardt Funeral Home with the Rev. Carl W. Schwarm officiating. Burial followed in Oak Grove Cemetery. The family suggests that those desiring to do so may make memorial contributions to the First Congregational church Memorial Fund in Mrs. Reinhardt's memory.

## BIRTHS

A daughter, Denise Renee, Nov. 8 at St. Joseph Mercy Hospital, Ann Arbor, to Mr. and Mrs. Douglas Varker, 17900 North Territorial Rd. Maternal grandparents, Mr. and Mrs. Dick Kietzman of Roberts, Ill. Paternal grandparents, Mr. and Mrs. Dale Barker of Chelsea.

### Story Hour Suspended

The Story Hour at the McKune Memorial Library scheduled from 10 to 11 a.m. Wednesday mornings has been suspended until further notice.

Americans spend some \$11 billion per year on travelling in the U. S., and 33 states list vacation dollars as one of their three top sources of income.



FRIENDS OF 4-H: Mrs. Kathleen Chapman of Chelsea and Jack Bradbury of Dexter hold capacity as a friend of 4-H one must serve in the named as a friend of 4-H one must serve in the capacity as a leader. Mrs. Chapman was a leader for 12 years of the Wide Awake 4-H Club. Bradbury is a County Commissioner who takes an active interest in 4-H youth activities. Mrs. Chapman who has served as an Extension office secretary for nearly 25 years, in order to be

### Parents of Children In Special Education Invited to Meeting

Parents who have children in one of Chelsea's special education programs are invited to meet Wednesday evening, Dec. 10 at 7 p.m. in room 204 at Chelsea High school. Purpose of the meeting is to enable parents to vent their concerns and problems they may have or anticipate having with their children. According to Mrs. Gladys Buck and Mrs. Nancy DeVoe who organized the meeting, parents are encouraged to relate concerns over school or home matters.

Services available to special students will also be discussed and suggestions may be made for improvement. County programs, county parent meeting, recreational activities, Special Olympics, vocational training and the use of High Point will all be discussed. Special education instructor at the high school, Nancy Porath, said she is hoping for a good turnout and stressed "this is only for parents and not professionals. We want parents to feel free to come and talk with each other."

The grasshopper has two pairs of wings—one pair is held rigidly in place in flight, like airplane wings, the other pair vibrates, and serves as propellers.

### Girls Varsity Cagers

(Continued from page one)

back in the second half to stay right with Dexter and to outscore them by two points in the second half; however, they were not able to catch up. High scorer for the Bulldogs was Penny Collinsworth with eight points. Teresa Breza and Sharon Donovan each scored four. Two points each were contributed by Karen Keiser, Mickey Bridges and Karin Roskowski.

The first printing press was brought to the U. S. in 1638 and is now in a museum in Vermont.

### First Snowfall Hits Area Last Thursday Morning

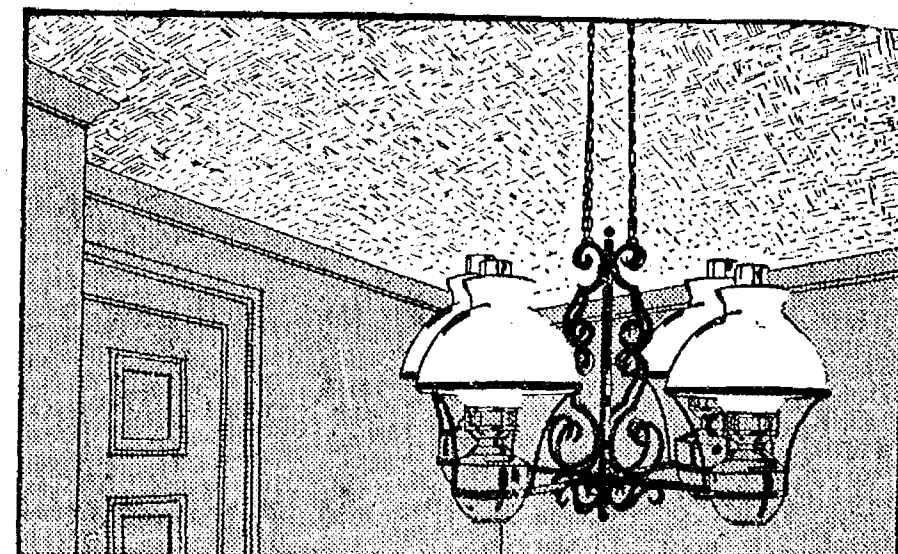
Southeastern Michigan was greeted with the first signs of winter last Thursday, when snowflakes fell intermittently in the area. However, the white stuff did not remain on the ground as the temperature inched toward 40 degrees. Snow is not forecasted for the immediate future and it looks as though this Indian Summer might last just a little bit longer.

**IF YOU'RE NOT HAPPY with ANY ceiling in your home**

**The FRIENDLY ONE would like to acquaint you with:**

**A WHOLE NEW WORLD OF CEILING BEAUTY:**

**Armstrong Chandelier Ceilings**



—THE PATTERN FLOWS FROM WALL TO WALL

—THE "CEILING-BLOCK" LOOK IS ELIMINATED

★ 7 DESIGNS TO CHOOSE FROM

★ 5 WAYS TO INSTALL THEM

From Only **\$69<sup>00</sup>** 12'x14' ROOM

**PLUS...**

**2,000 S and H GREEN STAMPS FREE!** WITH YOUR ORDER OF ANY 160 SQ. FT. CHANDELIER CEILING BEFORE DECEMBER 1st

**NOTE:**  
**We Will Close This Saturday, Nov. 22 at 12:30 p.m.**

**CHELSEA LUMBER** YOUR HOME CENTER

**GO GAMBLES FURNITURE SALE!**

**COMPLETE!**

**BUNK BED SET**  
Maple-finish hardwood bed. Complete with 2 innerspring comfort mattresses and link springs. Use as twin beds too.

Reg. \$319.95  
**NOW ONLY \$269<sup>95</sup>**

**WAGON WHEEL SET**  
Reg. \$269.95  
**NOW ONLY \$239<sup>95</sup>**

**SHOP NOW & SAVE**

**KIWANIS CITRUS FRUIT SALE!**

**Direct from the Groves in Sunny Florida**

**Tree-Ripened Florida Citrus Fruit**

- ★ NAVEL ORANGES
- ★ GRAPEFRUIT (White and Pink)
- ★ TANGELOS

**You may order all oranges - all grapefruit, or mixed, half and half.**

Five days before the citrus fruit is on your table it was hanging on a tree in sunny Florida. Truly fresh Florida citrus fruit.

**YOU CANNOT BUY THIS IN ANY STORE!**

ORDER NOW! Receive the finest CITRUS FRUIT you have ever eaten . . . and help Kiwanis carry out their many community service projects.

**Case (4/5 bu.) - \$8.00**      **Half Case - \$6.00**

PLACE ORDERS WITH ANY OF THE FOLLOWING:

CHELSEA PRO HARDWARE  
HEYDLAUFF'S  
GAMBLES  
RICK'S MARKET  
STATE FARM INSURANCE  
OR ANY CHELSEA KIWANIAN

**ORDER BY DEC. 2 - DELIVERY DEC. 12**



## Girls JV Cagers Win Over Dexter

The Chelsea girls JV basketball team won their last home game last Tuesday, by defeating Dexter, 30-29. "It was a good team effort with nearly everyone playing. We scored consistently throughout the game and made a fair percentage of our free throws. We also successfully pressed Dexter and made them rush their game. Our season has been less than successful but we all feel this victory made up for some of our close defeats," remarked coach Cindy Bradbury.

High scorer with 10 points was freshman Lori Miles. Tracy Hawker led the team with 16 rebounds. Also scoring for Chelsea were Jackie Lamb, Tracy Hawker, Sue Heydlauff, Cindy Welshans and Nancy Knott.

The girls traveled to Brighton last Friday night where they suffered yet another close defeat by a score of 35-32. "I was really pleased with our performance even if we did lose," said Bradbury. The girls were down 16-5 at the end of the first quarter and they just kept working until we were leading at the end of the third quarter," she said. As happens in many sports they lost momentum in the fourth quarter and failed to make baskets and free throws. Chelsea played a fine game to come from behind and got 32 points. "We just didn't get the breaks when we needed them," she concluded.

High scorer was Sue Heydlauff with 12 points. Leading rebounder was Sheryl Kiel with 12. Adding points were Lori Miles, Joan Lutovsky, Tracy Hawker, Veronica Satterthwaite, Sheryl Kiel and Nancy Knott.

Veterans Administration counselors at 72 centers across the nation have conducted more than 2.1 million interviews with Vietnam-era veterans.

## Hospital Patients May Invite Guest For Thanksgiving

Thanksgiving will be a very special day at Chelsea Community Hospital. It was announced today by Willard H. Johnson, administrator of the hospital.

Each patient hospitalized over Thanksgiving Day may invite one relative or friend to have Thanksgiving Dinner, at the noon hour, with all the trimmings, courtesy of the hospital. Patients and guests will be encouraged to utilize the hospital's comfortable, home-like dining room for their Thanksgiving meal.

## Clothing Drive To Help Needy Persons Overseas

St. Mary's is holding a Thanksgiving clothing collection tonight (Thursday) and Friday night, Saturday and Sunday for the needy overseas.

According to Jack Merkel, items mostly needed at light weight clothing, men's pants and work clothes, infants clothing, layettes, blankets and shoes in good condition. Merkel remarked that all the items donated should be clean and in good repair.

The collection depot will be in the school basement. The north doors on Congdon St. will be the only access to the building and once inside signs will point to the designated area.

## Cong. Bob Carr Meets Residents Here Saturday

Congressman Bob Carr held a public forum in the Sylvan Town Hall Saturday, Nov. 15, to talk with area residents about their concerns with respect to the federal government.

Constituents discussed issues concerning the Panama Canal, worldwide nuclear proliferation, oil prices and fiscal planning.

Carr regularly holds community meetings to give local constituents the opportunity to personally voice their concerns with their representative in Washington.

Carr also visited Dexter and Howell Saturday.

## Schools Closing for Thanksgiving Holiday

Chelsea Schools will close Wednesday, Nov. 26 after school and remain closed Thursday and Friday for the Thanksgiving holiday. Classes will resume Monday, morning Dec. 1 at the usual time.

## School Board Briefs

At a special meeting of the Chelsea Board of Education held Monday evening, Nov. 17, present were President Haselschwardt, trustees Irwin, Hodgson, Daniels, Schafer, and Stirling, Supt. Cameron and Business Manager Mills, Principal Wojcicki and Attorney Flintoft. Guests present were Joe Rossi and Charles Kelly.

The meeting was called to order at 8:15 by President Haselschwardt.

Motion by Daniels, supported by Schafer, to approve the minutes of Nov. 3, 1975 as presented. All ayes.

Motion by Irwin, supported by Tobin, to approve the minutes of Nov. 11, 1975 as presented. All ayes.

The board awarded a contract to the P.O. Kelley Construction Co. of Whitmore Lake to complete the concrete work at all schools for the amount of \$18,857.85.

Payment of 1974 Building and Site bills totaling \$331,586.94 were approved.

The resignation of Mrs. Anne Schaffner as high school girls softball coach was accepted.

A resolution of commendation to the football team and coaches for their undefeated season and league championship was adopted.

Supt. Cameron discussed the effect of the Governor's recommendation for reducing state aid. The Governor's recommendation would reduce state aid to the Chelsea School District by approximately \$59,000.

Supt. Cameron and Business Manager Mills were directed to present proposals and recommendations for balancing the budget on Dec. 1.

The board discussed the millage levy for 1976-78 and future years. The operational millage of 13.50 mills additional voted mills expires with the December 1975 levy.

Supt. Cameron discussed the proposed revision of the juvenile code.

Meeting adjourned at 11:10 p.m.

## Meeting of Band Parents Slated Tonight To Discuss '76 Camp

Myles Mazur, director of bands at Chelsea High school, has called a meeting for parents whose children plan to attend band camp next August, for tonight (Thursday) Nov. 20 at 7:30 p.m. in the high school band room.

This is not a regular Band Booster meeting.

Mazur encourages parents of children now in band or who will have children in the high school band next year to attend.



**HIS FAVORITE CHARITY:** Donald Houle, supervisor in the tool room at the Dana Corp. is pictured here handing a \$25 U. S. Savings Bond to Fr. Germann at St. Louis School for Boys. According to Houle he won the bond when he submitted a suggestion to save money through the Scanlan plan at Dana. Instead of keeping the bond, Houle decided to donate it to his favorite charity, St. Louis school for their athletic program, and remarked "I'd like to see more people donate to their favorite charity."

## JV Cagers Working on Fast Break

Chelsea's Junior Varsity Basketball team is hard at work preparing themselves for their first game of the season to be played Friday, Nov. 28 with Jackson Northwest.

According to their coach, Paul L. Terpstra, the 13-man sophomore team is working "hard on man to man pressure defense." We believe that good defense is the first step to winning the game," Terpstra remarked.

Composing this year's team are John Daniels, Joe Ewald, Mark Feeney, Matt Fisher, Randy Harris, Brian Lewis, Matt McClellan, Kurt Owings, Bruce Rabbitt, Jeff Rudd, Dave Schrotenboer, Chris Smyth, and Chip Stafford. Tom Rudd will serve as manager and Greg Ringe will keep the statistics.

## Kathy Stoll Named Head Resident Assistant

Kathy Stoll has been appointed Head Resident Assistant of Warren Hall at Davenport College of Business in Grand Rapids. Her responsibilities include identifying housekeeping and safety problems, helping with the reception and orientation programs for the residents of her hall, and performing various clerical duties.

Kathy is the daughter of Mr. and Mrs. Arthur Stoll, 517 Glazier Rd.

Terpstra noted that much of this year's offense will be based on four players over six feet in height. "We plan on using this height to trigger our fast break offense," he said.

A long-standing Chelsea opponent and one of the favorites for the JV race this year is the Saline Hornets, however, Terpstra is optimistic saying that "with continued hard work and improvement we feel we can challenge the Hornets for the title."

Prior to their first game on the 28th, the JV Bulldogs will scrimmage against Tecumseh and Hudson this Saturday at 8 a.m. in CHS gymnasium.

The public is invited to watch the pre-season game.

## smiles wanted

Warm ones, courteous ones, even plain old-fashioned ones.

We're looking for smiles and the people who come with them to work at McDonald's.

So, if you have some extra time, make some extra money. Spend a couple hours a day behind the counter at McDonald's.

Come on over and bring your smile.

**McDONALD'S OF SCIO TWP.**  
373 North Zeeb Road  
ANN ARBOR, MICH. 48103  
An Equal Opportunity Employer

## JUST LIKE THE GOOD OLD DAYS!

3-LB. TIN  
**POTATO CHIPS** At A Good Old-Fashioned Price JUST **\$2.49**  
(Plus Deposit)

## BE GOOD TO YOURSELF!

Rick will be **BAKING FRESH** for your  
**THANKSGIVING DINNER**

Dinner Rolls, Breads and Pies (Pumpkin, Mince, Apple, Cherry and Pecan)

**ORDER NOW** for pick-up **THANKSGIVING Morning**  
Have a Very Happy Day!

BUBBLE UP WITH  
**7-Up, Diet or Reg.** 12-Oz. Cans **6 pac 95c**

Rick's Will Close Thursday, Nov. 27, for Turkey Dinner  
from 2 p.m. to 4:30 p.m.

**RICK'S MARKET**  
North of Chelsea on M-52 "The Friendly Store" Phone 475-2898

**10% Off**  
on  
**LEISURE  
SUITS**

**20% Off**  
on  
**LADIES  
SLEEPWEAR**  
Make excellent  
Christmas gifts!

**SEE OUR  
\$3.00 MOOD RINGS**

**LAY-AWAY NOW  
FOR CHRISTMAS**

While selections are good.

**DANCER'S**  
Chelsea's Friendly Dept. Store



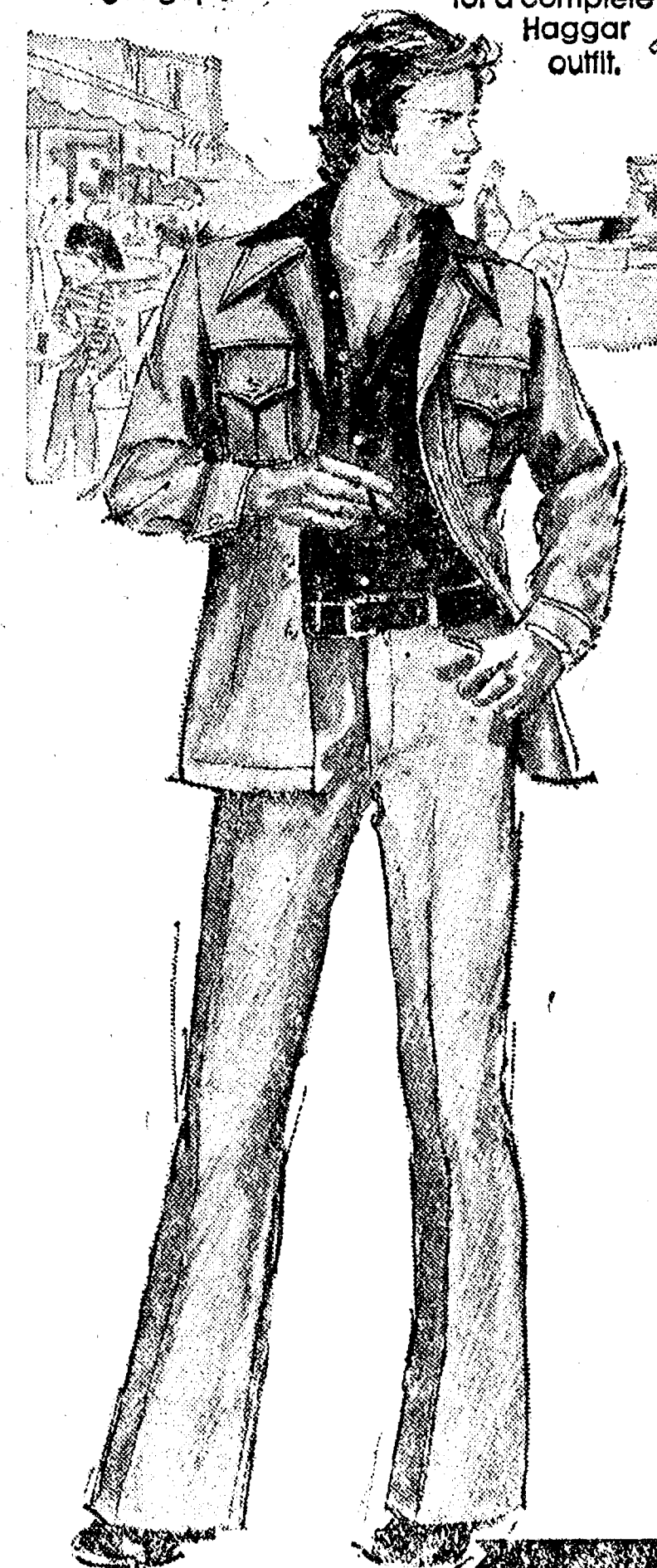
## AVANTIGABS

Take a contemporary look at Europe in the colorful Avant Gabs Collection by Haggart.

The top has a silhouette that's shaped. Double welted seam back, front darts and straight yoke styling—front and back, complete the look, for only \$25. The slacks have Comfort-Plus styling, with fashion pockets and a gentlemen's flare for only \$16.

Both top and slacks are machine washable and dryable in a 100% Dacron polyester textured woven gabardine. So who says the cost of looking good is going up?

Only **\$41**  
for a complete  
Haggart  
outfit.



**STRIETER'S MEN'S WEAR**  
"The Place To Go for Brands You Know"



Ads  
Taken  
till 1 p.m.  
Tuesday

# Advertise the Action Way! The Want Ad Way!

Just  
Phone  
475-1371

## WANT ADS

### The Chelsea Standard

#### WANT AD RATES

PAID IN ADVANCE—All regular advertisements, 75 cents for 25 words or less, each insertion. Count each figure as a word. For more than 25 words add 3 cents per word for each insertion. "Blind" ads or box number ads, 50¢ extra per insertion.

CHARGE RATES—Same as cash in advance, with 25¢ extra for each day preceding publication. Pay in advance, send cash or stamps and save 25¢.

DISPLAY WANT ADS—Rate, \$1.40 per column inch, single column, width only, 10-point and 14-point type only. No borders or boldface type. Minimum 1 inch.

CARDS OF THANKS or MEMORIALS—Single paragraph style, \$1.50 per insertion for 50 words or less; 3 cents per word beyond 50 words.

COPY DEADLINE—1 p.m. Tuesday week of publication.

FOR RENT—Large 3-room apt., upstairs, partly furnished. Suitable for two only. Security deposit. No pets. Ph. 475-7486. x23

NEW natural "Grapefruit Extract Pill" from Harvestime Nutritionals more convenient than grapefruits. Eat wholesome meals and lose weight. Chelsea Pharmacy. -24

### Special of the Week

1974 FORD RANCHERO PICK-UP GT  
\$3495

### USED CARS

1975 OLDS Vista Cruiser wagon, 3-seat, air cond. \$5095

1975 OLDS Omega 2-dr. sedan, 1,800 miles \$3495

1973 OLDS Delta 88 Royale 4-dr. sedan \$2995

1972 PONTIAC Catalina 4-dr. sedan, air cond. \$1895

1971 OLDS Custom Cruiser wagon, 3-seat, air cond. \$1895

1971 PONTIAC Catalina 2-dr. hardtop, air cond. \$1695

1971 BUICK LeSabre Custom 4-dr. hardtop, air cond. \$1895

1971 OLDS Delta 88 4-dr. sedan, air cond. \$1595

1971 FORD LTD 2-dr. hardtop, air cond. \$1595

1971 OLDS Delta 88 4-dr. hardtop, air cond. \$895

1970 OLDS 98 4-dr. hardtop, air cond. \$1895

1970 BUICK Electra 225 4-dr. hardtop, air cond. \$1395

1970 LINCOLN 4-dr. sedan, air cond. \$1395

1967 CHRYSLER 4-dr. sedan, \$495

1966 BUICK LeSabre 4-dr. sedan \$195

Mon. - Tues. - Wed. - Fri. 8:00-5:30  
Thurs., 8:00-9:00  
Sat., 8:00-1:00

### SPRAGUE

Buick-Olds-Opel, Inc.  
Sat., 8:00-1:00  
1500 S. Main St., Chelsea 23tf

### COLLECTORS SALE

In heated building - Lots of Costume Jewelry - Glassware - Knick-knacks - Books - Prints (Rockwell-Coca Cola, etc.) - Christmas decorations - Frames - Buttons - Old Trivia - Mantles - Matchcovers - Radio and electronic miscellany - Much - much more - Dexter 426-8170. Call before coming. -x23

MOTOR HOME—Traveco 68. Air cond., generator, 21-ft., sleeps 4, self-contained. Very good condition. 475-2820. -23

## Your Opinion of Us

is our most valued asset.

# Staffan Funeral Home

"Funeral Directors for Four Generations"

124 PARK STREET PHONE GR 5-1444

## WANT ADS

### PATCHING and PLASTERING

Call 475-7486. 23tf

### CLOGGED SEWER

#### Reynolds Sewer Service

We Clean Sewers Without Digging  
Drains Cleaned Electrically  
FREE ESTIMATES  
2-YEAR GUARANTEE  
Phone Ann Arbor NO 2-5277  
"Sewer Cleaning Is Our Business—Not a Side Line" 38tf

WANTED—Men (17 thru 27 years of age) for Security police training. Good starting salary and fringe benefits. Call your Air Force representative at 973-1830. 29

### WANTED—Men (17 thru 27 years of age) for Security police training. Good starting salary and fringe benefits. Call your Air Force representative at 973-1830. 29

C—ustom Built Homes  
O—ht We Remodel too  
U—can count on us  
T—rim Inside & Out  
R—ough-in Only If  
Y—ou Want to Finish  
S—iding Aluminum, 5" Gutters  
I—mmediate Attention  
D—ALE COOK & CO.  
E—stimates, Free

### DALE COOK

17tf

### BOB'S LOCK & KEY

Complete Locksmithing Service  
Commercial, Residential,  
Automotive  
Luggage locks repaired.  
475-9071  
-41tf

### GEORGE W. SWEENEY

#### HEATING

Licensed Contractor  
Furnaces, air conditioning,  
and sheet metal work.  
Phone 475-1867  
-20tf

### J. R. CARRUTHERS

LICENSED  
RESIDENTIAL BUILDER  
CUSTOM HOMES  
ADDITIONS/FIREPLACES  
PATIO  
ROOFING/SIDING/REPAIRS  
475-7234  
CHELSEA 30tf

FOR RENT—4,300 ft. office and warehouse with loading dock. Paved off-street parking. In Dexter. Call 426-4002 after 6 p.m., or week-ends. x12tf

## WANT ADS

### HOUSE FOR SALE by owner—4 bedroom ranch, family room, 2 baths, full basement, 3 years old. Ph. 475-1791. 14tf

### ALBER FARMS

#### ORCHARD - CIDER MILL

Member Michigan Certified Farm Markets  
Northern Spy and Ida Red  
Sweet Cider - Whiskey Barrels  
New Kegs - Potatoes - Misc. Items  
Open All Winter Daily  
9 a.m. to 6 p.m.  
except Thanksgiving, Christmas and New Year's Day.  
13011 Bethel Church Road  
Manchester - 428-7758 28

### Real Estate One Of Washtenaw

1196 M-52  
Chelsea, Mich. 48118  
We Make Things Simpler For You!

### OWNER ANXIOUS TO SELL—3 bedroom home overlooking North Lake on 1 1/2 acres. \$42,500.

COMPLETELY REMODELED older home in Village of Manchester. Walk to schools and shopping. Immaculate! \$32,900. Owner anxious.

DAYS - 475-8093

Evenings—  
Steve Flint 475-1423  
Jean Tschirhart 475-2722  
Jack Edington, Manager 426-2592  
Al Kleis 475-7322  
Evelyn White 475-7551  
Aileen Zsenyuk 428-7824  
Ted Picklesimer 475-8174  
Joe O'Connor 994-1223 23

### DEER PROCESSING

#### Manchester Locker Plant

Manchester - Ph. 428-7600 x24

### Pickup Caps & Covers

For all makes and models. Standard and custom-designed. From \$147.00. Free brochure.

### PIONEER COACH MANUFACTURING CO.

3496 Pontiac Trail  
Ann Arbor, 688-6785 x42tf

### La-Z-Boy Give-Away Winners

FIRST PRIZE  
Mrs. David Habecker  
208 Pine  
Tecumseh, Mich.  
SECOND PRIZE  
Mrs. Lionel Vickers  
668 Washington  
Chelsea, Mich.  
THIRD PRIZE  
Caroline Ringman  
302 Chippewa St.  
Tecumseh, Mich.

## YES

WE ARE MAKING  
LONG TERM FARM  
REAL ESTATE  
LOANS

SEE US

Federal  
LAND BANK  
Association

P. O. Box 7006  
Ph. 769-2411 3645 Jackson Rd.  
Ann Arbor, Mich. 48103

## WANT ADS

### FOR RENT—Fair Service Center for meetings, parties, wedding receptions, etc. Weekdays or week-ends. Contact John Weitzel, phone 475-1518. x31tf

### Headquarters for

## RED WING WORK SHOES

### Foster's Men's Wear

40tf

### HOUSE FOR RENT—2 bedrooms, with fireplace, on Half Moon Lake. Available Dec. 10. Ph. after 6 p.m. or week-ends, 475-1424. -24

GARAGE SALE—Friday and Saturday, Nov. 21 and 22, 1984 Waterloo Rd. 23

### ALLSTATE INSURANCE

AUTO - BOAT - COMMERCIAL  
LIFE - HEALTH - HOME  
N. H. MILES, Agent  
Phone Eves. or Week-ends for 34tf

### MAINTENANCE MECHANIC

#### FULL - TIME

Requires at least five years experience and mechanical, electrical repair and carpentry. Must possess good judgment, initiative and interest. Excellent working conditions, salary negotiable depending on experience.

### Chelsea Community Hospital

475-1311  
An equal opportunity employer. x23

FOR SALE—Buffet clarinet (for the serious player), pie safe, butter churn; misc. clothing under \$1. Ph. 475-8317. x23

### PART-TIME EMPLOYMENT

The Ann Arbor Unit of the Michigan Army National Guard needs people. Men and women 17-35. Veterans may qualify up to age 45. Special program for high school seniors.

8:30 a.m. to 4 p.m.  
Monday through Friday  
Phone: 662-0490

### WURLITZER ORGAN—"Fun-maker," 3 yrs. old, good condition. Ph. 475-1613. -x23

## BRAND NEW HOUSE FOR SALE IN THE COUNTRY

### FEATURING

- ★ 3 large bedrooms
- ★ 1 1/2 baths
- ★ Full basement
- ★ Large 2-car garage
- ★ Formal dining room
- ★ Studio ceilings
- ★ Two sliding glass doors opening to a pine grove
- ★ Maintenance-free cedar and aluminum exterior
- ★ Insulated wood windows
- ★ 3 1/2" and 6" insulation for low heat bills
- ★ Chelsea schools

This house is so new you still have time to select your own carpet colors. Drive by: Take North Territorial Rd. to Hankard, turn north, go two miles on Hankard to Noah Rd., go left on Noah Rd. 500 ft. (Noah Heights is on your left.)

NOAH HEIGHTS is a very exclusive small country subdivision of acre lots, with friendly neighbors, not too close, but not too far. Lots are completely surveyed, covered with pine and oak trees, and located adjacent to state land for year around outdoor enjoyment.

A BEAUTIFUL PLACE TO LIVE  
\$45,900 (Complete)

475-2828

Appointments Anytime

## WANT ADS

### Fireplace Builder

Field stone mason, block and brick mason, tuck pointing.  
FREE ESTIMATES  
Call 475-8025 after 3 p.m.

### Patrick Grammatico

x40tf

EARN EXTRA MONEY one or two evenings a week doing something you like. With guaranteed product new to Michigan. Earn \$85. Ph. 475-7129. x24

### Pre-Christmas Sale

## BEL - MAR

### ANTIQUE SHOPPE

Through December 15th. Quality items only. For information, and/or appointment, call Unadilla 1-498-2788, after 6:00 p.m. on week-days. x23

### CHELSEA

NEW LISTING—\$37,500. 3-bedroom ranch with dining room, 16x24 living room, 2 1/2-car garage.

10 ACRES—4 bedroom colonial, dining room, family room, fireplace, 30x50 barn, Chelsea schools.

SUPER KITCHEN in this 2-bedroom, close to shopping and downtown, \$30,500.

1 PLUS ACRE—3 bedrooms, dining el, many trees, fenced yard, new roof, Dexter schools. \$32,900.

EXCELLENT LOCATION—4 bedrooms, new siding, new roof, 100x200 foot lot that backs up to woods, reduced to \$46,900.

\$19,500—Mobile home on access to Bruin Lake.

26 ACRES—Excellent location between Chelsea and Ann Arbor, house has 3600 sq. ft. would make ideal home to restore.

3 ACRES or more land available, 4-bedroom Tri-level, stone fireplace, shelter for animals, Grass Lake schools.

### FRISINGER REALTORS

Chelsea 475-8681

Evenings:  
Burke Fitzgerald - 1-878-6603  
Paul Frisinger - 475-2621  
Bob Koch - 428-4754  
Herman Koenn - 475-2613  
Toby Peterson - 475-2718 x23tf

FOR SALE—1971 Chevy Cheyenne 1/2-ton pick-up. Low mileage, with or without camper shell, \$13,350. Ph. 475-8852. -x23

ROOMS FOR RENT—\$80 month. Utilities included. Kitchen privileges. Come to 3435 Edison, Dexter, for more details ask for Jo Ann ONLY or call 426-4903 before 8:30 a.m. or 4-5 p.m. x23

## WANT ADS

### GARAGE SALE—148 Dewey St., Chelsea, Friday, Saturday, and Sunday, Nov. 21, 22, and 23. 23

### SMALL FARM HOUSE—3 bedroom, semi-furnished, Chelsea area, secluded. Ph. 428-7558. 23tf

### LEONARD REITH

### Master Plumber

### Licensed Electrician

### Hot Water Heat

### 18238 N. Territorial Rd.

### Chelsea, Mich. 48118

### Phone: 475-2044

### THORNTON

\$27,900—Charming 2-bedroom home with fireplace. Completely remodeled. Access to Half Moon Lake. Rural wooded location.

CHELSEA SCHOOLS—This 3-bedroom ranch is situated on 1.2 acres, lovely country spot not far from town. Small study, full basement, 2-car attached garage. \$39,900.

EXECUTIVE ESTATE—Designed for informal entertaining—large open living space. Master bedroom suite, fireplace, deck, family room, many luxury extras. On 26 acres, secluded and wooded, 17 miles from Ann Arbor. In Chelsea schools. \$142,000.

DECORATOR'S DREAM—Beautiful extra large ranch home offers easy access to I-94. Family room with fireplace—spacious living, 3 bedrooms, 2 1/2 baths, plus 1st floor laundry, air conditioned. Full basement and 2-car garage. \$79,500.

14 ACRES—Good 3-bedroom ranch in Stockbridge schools. Carpeted, 2 1/2 baths, full basement, barn on property. \$49,500.

STOCKBRIDGE SCHOOLS—Newer 4-bedroom home features fully finished lower level, could be mother-in-law apartment. 5-acre property, great spot for mini farm.

### VACANT LAND

66 ACRES—Some wooded, some muck. Stockbridge township.

6 1/2 ACRES—Beautiful wooded lot with stream, near Chelsea.

15 ACRES—With lake. On quiet road. Chelsea schools.

### ROBERT H. THORNTON JR. PC REALTOR

CHELSEA 475-8828  
Dolly Alber 475-2801  
Dorothy Henry 475-7356  
Helen Lancaster 475-1198  
Peg Hamilton 475-1870  
Mark McKernan 475-8424 23

BY OWNER—3-bedroom brick, 1 1/2 baths, family dining room with fireplace, 2-car garage, screened porch, carpeted, half basement. Ph. 475-8464. -24

## WANT ADS

### Sand Gravel

### KLINK EXCAVATING

Bulldozer - Backhoe  
Road Work - Basements  
Trucking - Crane Work  
Top Soil - Demolition  
Drainfield - Septic Tank  
Trenching, 5" up

Industrial, Residential, Commercial  
CALL 475-7631 13tf

### KNAPP SHOES

For Cushion Comfort  
Robert Robbins  
475-7282 48tf

### FALSTAFF HORSE FEED

in stock. Ph. 668-8301. x23

### REAL ESTATE

4-BEDROOM HOME—All on one level, kitchen, dining room, living room, utility room. Oil forced air heat. On one acre. Munith schools. \$17,500.

OLD TOWN HALL building in village of Waterloo, includes lot. \$5,000.

NEW 3-BEDROOM home on 5 acres, large fireplace, spacious living room with window-wall overlooking woods, full walk-out basement, 2-car attached garage, 5 minutes to Chelsea.

LAKEFRONT HOME with 2 bedrooms, 2 years old, fireplace, deck overlooking lake, gas charcoal grill, 2-car garage. Chelsea schools. Lower \$50,000.

4-BEDROOM HOME on 1 acre. Full basement, 2-car garage, space for small business. Stockbridge schools. \$28,500.

ATTRACTIVE 2-bedroom with lake access, new gas heating system, new roof, newly decorated. \$27,900.

14 ACRES, heavily wooded, Webster township, 3 miles to US-26. Dexter schools. \$13,500, 7 1/2% land contract.

2.2 ACRES—Lyndon township, surveyed and perc approved. Beautiful rolling land. Area of nice homes. Chelsea schools. \$8,500.

10 ACRES wooded, 546-foot road frontage, 4" well on property. 15 min. to Chelsea. Waterloo township. \$15,000. Land contract terms possible.

2-ACRE beautiful building site with trees. Waterloo township. \$7,000. Land contract terms possible.

10 ACRES with scenic view. Flowing stream connects two lakes, near state land. \$15,000, 7% land contract.

5 ACRES pretty rolling land, 270 foot frontage south of I-94. Chelsea schools. \$10,000.

1 1/2 ACRES on Chelsea-Dexter Rd. Surveyed and drain field installed. Area of nice homes. \$15,000.

### WATERLOO REALTY

355 Clear Lake  
JOANN WARYWODA, BROKER  
Phone 475-8674

Evenings:  
Sue Lowe, 475-2377  
Paul Erickson, 475-1748 x23tf

1972 FORD F-250 3/4-ton Sport Custom Camper special pick-up. Sharp two-tone red and white paint. This truck must be seen to be appreciated. V-8, p.s., p.b., auto, trans, aux. gas tank, slide-out bumper, radio, orig. new spare tire, only 22,000 miles. Asking \$22,875 or take over payments. Call 662-7458 or 475-7951. -23

## WANT ADS

### FOR SALE—Simmons Hide-A-Bed sofa, avocado green, like new, \$150. Ph. after 4 p.m., 428-7288. 23

### Pierson & Riemenschneider

LAKE ACCESS—2-bedroom home, full basement, land contract possible. Only \$18,500.

LOVELY 3-BEDROOM—Double wide mobile home, completely furnished, central air, 1 1/2 baths, utility shed. Jackson schools.

8 ROLLING ACRES—2 bedrooms, and extra room, first-floor laundry, 2-car garage. Chelsea schools. Beautiful area.

2-STORY HOME—In the Village of Chelsea. Close to schools and shopping, 3 bedrooms, new kitchen, family room, dining room, 1 1/2 baths, redwood deck. Just \$38,500.

GREAT HOME for the large and active family. 4-6 bedrooms, family room, recreation room, 3 baths, 2 1/2-car attached garage, workshop. Much, much more to offer on 1.40 acre. 1 mile to Chelsea.

### ACREAGE

WATERLOO RD.—2 acres, trees, \$8,500.

MCKINLEY RD.—2.71 acres, wooded, \$15,000.

MUSBACH RD.—10 acres, rolling, terms, \$15,900.

NOAH HEIGHTS—(4) 1 acre wooded parcels, \$8,900 and up.

LOWREY RD.—5 acres, rolling, terms, \$9,800.

LINDLEY RD.—2.26 acres, trees, terms, \$13,000.

### Pierson & Riemenschneider

Office: 475-9101  
Eves. call:  
Jeanene Riemenschneider 475-1469  
Pat Merkel 475-1824  
John Pierson 475-2064  
Bob Riemenschneider, 475-1469 23tf

### Seasoned Firewood

\$25.00 per cord  
Delivered  
Bill Young - 475-7181 18tf

### NOW

### Full Time

### Complete

### Body Shop

### Service

Stop in For An Estimate

### PALMER FORD

222 S. Main St.  
475-1301 27tf

## SCHNEIDER'S GROCERY

### CHOICE MEATS - FINE FOODS

|  |  |
|--|--|
| 1-LB. PKG. ECKRICH<br><b>Bologna . . . \$1.19</b>            | 3-LB. BAG<br><b>Delicious Apples . 59c</b>       |
| 16-OZ. NO-RETURN BOTTLES<br><b>Coke . . . 8 pac \$1.49</b>   | 3-LB. BAG<br><b>Yellow Onions . . . 39c</b>      |
| 16-OZ. LOAF NEW YORK FROZEN<br><b>Garlic Bread . . . 59c</b> | ALL-BEEF<br><b>Hamburger . . . 3 lbs. \$2.09</b> |
| 8-OZ. CRTN. McDONALD'S<br><b>Yogurt . . . 5 for \$1.00</b>   | 16-OZ. PKG.<br><b>Ritz Crackers . . . 69c</b>    |
| McDONALD'S<br><b>Whipping Cream . . . 1/2 pt. 29c</b>        | 12-OZ. CANS<br><b>7-Up . . . 6 pac 95c</b>       |

121 S. MAIN ST. PHONE 475-7600

Your Store for  
Alexander & Hornung's  
Smoked Meats

We Accept  
U.S.D.A.  
Food Coupons



## WANT ADS

### - YOUNG -

We list and sell lake, country and town properties. Eugene Young, Real Estate & Builder, 878-3792, 11506 Dexter-Pinckney Rd., Pinckney 48169. x341f

CARPENTER WORK - Inside or out. Mr. Coburn, 475-2883. 121f

### COMPLETE ALUMINUM SERVICE

Siding - Awnings - Repairs  
Gutters - Storm Windows  
Remodeling

Free Estimates

Call 475-9209

Camelot Construction  
Chelsea, Mich. x121f

### CUSTOM BUILDING

LICENSED & INSURED  
FREE ESTIMATES

### TOTAL CONSTRUCTION SERVICES

- Residential, commercial and industrial  
- Garages  
- Remodeling - Additions  
- Aluminum Siding  
- Roofing  
- Trenching

### SLOCUM CONTRACTORS & BUILDERS

Serving Washtenaw County  
For Over 20 years  
20700 OLD US-12  
CHELSEA  
Phone 475-8321 or 475-7611 21f

### CUT FOOD COSTS

Grow your own fruit on Stark Bros. trees.

Reserve stock now for spring mail delivery.

Elson Bettner  
15700 Cassidy Rd.  
475-9223 151f

### ATTIC INSULATION

Meets Federal specifications. 6" blown insulation has R-25-plus, compared to a R-19 for blanket insulation. Complete job costs compare with material cost of blanket insulation.

ARNIE RAE  
Evenings (517) 851-8762  
17936 M-36, Gregory x22

## WANT ADS

CLEAN, soft, fluffy dry carpets. That's what you get when you clean them with HOST. Rent the HOST Machine. Merkle Home Furnishings, Chelsea, 475-8621. x23  
FOR SALE - Indian cents, postcards, books, foreign coins, Australian opals, and other articles. Will treat you fine. Lawrence E. Guinan, Sylvan Hotel, 114 N. Main St., Chelsea. 231f  
WEDDING STATIONERY - Prospective brides are invited to see our complete line of invitations and accessories. The Chelsea Standard. Ph. 475-1371. 81f

### GUTTERS

SEAMLESS aluminum eave-troughs installed. White and brown. Call Wilson Metal Shop, Manchester, 428-8468. x81f

### McCulloch Portable Generators Chain Saws

WE SELL SERVICE, SHARPEN AND TRADE.

Chelsea Hardware 211f

### VACUUM CLEANERS

Authorized Electrolux sales and service.

James Cox  
428-2931, or 428-8688  
118 Riverside Dr., Manchester 481f

FOR REAL DOLLAR SAVINGS be sure and see us before you buy any new or used car. Palmer Motor Sales, Inc. Your Ford Dealer for over 60 years. 21f

TRAILER SPACE FOR RENT in Chelsea, for medium or small size trailer. Village water and sewer, convenient location. Call 1-474-8552. x23

### Complete Body Repair Service

Bumping - Painting  
Windshield and Side Glass Replacement

Free Pick-up & Delivery  
Open Monday Until 9  
CONTACT DON KNOLL  
FOR FREE ESTIMATE

Village Motor Sales, Inc.  
IMPERIAL - CHRYSLER  
DODGE - PLYMOUTH  
Phone 475-8661  
1185 Manchester Rd., Chelsea  
Hours: 8 a.m. to 6 p.m.  
Tues. thru Fri. Until 9 Monday.  
9 a.m. to 1 p.m. Saturday x141f

FOR SALE - 1873 Springfield military rifle, caliber 45-70. Excellent condition. 475-7382. x23

FOR SALE - Kroehrer sofa and matching chair, modern design in tan and brown frieze, in good condition. May be seen at 18250 Bush Rd., Chelsea or call 475-8575 after 5:30. x24

LICENSED HOME FOR AGED - Large room adjoining half bath, telephone and TV hook-up available. Good care. State inspected. Mrs. Duffield G. Ball, Manchester, 428-8595. x24

## WANT ADS

WANTED - Am interested in purchasing components for a Dodge Van, we need bed, table, refrigerator, stove, etc. want them in good condition and reasonable. Ph. 475-8317 evenings. x23  
PIANO TUNING, Chelsea and area. Facilities for reconditioning and rebuilding. Used piano sales; reconditioned grands and verticals. E. Ecklund, 428-4429. x501f

### Once-A-Year Sale! New Cars & Trucks, Demos, Driver Ed Cars at Tremendous Savings!

#### DEMOS

First come, first served!

Stock No. 805-75 Dodge D-100 pick-up, 318, auto., p.s., p.b., AM radio, 2-tone, Adventurer package, etc. Was \$554.05. NOW \$3900

Stock No. 894-75 Dodge Coronet Custom 4-dr. sedan, 360, auto., p.s., p.b., air cond., AM-FM, radio, 2-tone, etc. Was \$537.70. NOW \$4735

Stock No. 926-75 Dodge D-100 Club Cab, 133-in. wheelbase, 318, auto., p.s., p.b., AM-FM, speed control, radials, 2-tone, etc. Was \$574.10. NOW \$4610

Stock No. 973-75 Chrysler Newport 4-dr. sedan, 400 2-bbl., auto., p.s., p.b., air cond., AM-FM, speed control, radials, etc. Was \$6022.60. NOW \$4865

#### Driver Training Car

Stock No. 804-75 Valiant Custom 4-dr. 225, auto., p.s., p.b., AM-FM, radials, rear defroster, etc. Was \$4423.45. NOW \$3760

#### Used Trucks

75 CHEVY 1/2-ton pick-up, 350, auto., p.s., p.b., AM-FM, low mileage. \$3995

70 FORD 1/2-ton pick-up, 302 V-8, auto., p.s., p.b. \$1395

73 DATSUN pick-up, auto., cover \$2395

DEER HUNTER'S SPECIAL

73 FORD 1/2-ton pick-up, 360 V-8, 3-speed, AM radio, 8-ft. Fleetwing Cab-Over camper, with furnace, stove, etc. \$2695

70 FORD L-900 5-yd. dump truck, V-8, 5-speed. \$2395

#### NEW '75s

Stock No. 795-75 Duster Custom Coupe, 225, auto., p.s., AM radio, Space Duster pkg., etc. Was \$4251.95. NOW \$3745

Stock No. 819-75 Duster Custom Coupe, 225, auto., p.s., AM radio, white sidewalls, etc. Was \$3965.70. NOW \$3485

Stock No. 924 - 75 Dodge D-100 pick-up, 318, auto., p.s., p.b., AM radio, Adventurer pkg., 2-tone, etc. Was \$5152.55. NOW \$4155

Stock No. 974-75 Chrysler Newport 4-dr. sedan, 400 2-bbl., auto., p.s., p.b., air cond., AM-FM, speed control, radials, etc. Was \$5993.45. NOW \$4845

Also an excellent selection of new '75 Vans, Sportsman Wagons, Power Wagons, and Sno-Fitters at tremendous savings. Highest trade-ins. Bank financing arranged.

#### Quality Used Cars

75 PLYMOUTH Gran Fury Custom 4-dr. hardtop, 318, auto., p.s., p.b., air cond., speed control, AM-FM, rear defogger. \$3995

74 PLYMOUTH Fury 4-dr., V-8, auto., p.s., p.b., air cond. \$1595

73 DODGE Coronet Custom 4-dr., 318, auto., p.s., p.b., air cond., rear defroster, 6,000 miles \$2695

73 CHARGER SE, 318, auto., p.s., p.b., air cond., AM-FM, radials. \$3195

72 COUGAR 2-dr. hardtop, 351, auto., p.s., p.b., air cond., AM-FM stereo. \$2195

72 COLT coupe, 1600 cc., auto., very clean. \$1695

72 VW Bus, good condition. \$1995

12-ft. MIDWEST flatbed truck body. \$250

9 1/2-ft. FLATBED truck body. \$225

71 MERCURY Monterey station wagon, V-8, auto., p.s., p.b. \$995

69 PLYMOUTH Sport Suburban wagon, V-8, auto., p.s., p.b., low mileage. \$795

68 PLYMOUTH Fury III 4-dr., V-8, auto., p.s., rallye wheels. \$695

68 PLYMOUTH station wagon, V-8, auto., p.s. \$395

67 FORD station wagon, V-8, 3-speed. \$395

#### Village Motor Sales, Inc.

IMPERIAL - CHRYSLER  
DODGE - PLYMOUTH  
Phone 475-8661  
1185 Manchester Rd., Chelsea  
Hours: 8 a.m. to 6 p.m.  
Tues. thru Fri. Until 9 Monday  
9 a.m. to 1 p.m. Saturday x231f

### CARPENTERING REMODELING

ALUMINUM SIDING - KITCHENS  
PATIOS - GARAGES

PHONE 475-7474

CHARLES ROMINE

Licensed Contractor  
18027 Old US-12  
Chelsea

## WANT ADS

SEAMLESS ALUMINUM eave-troughs, roofing, siding, and carpentry work of all kinds. Experienced installers. All work guaranteed. Free estimate. Call R. D. Kleinschmidt Co., 428-8838. x311f

### KETO USED CARS

8020 GRAND - DEXTER  
426-4535

CARS BOUGHT AND SOLD

MUNITH AUCTION-100 Main St., Munith, Mich. Auction every Sunday, 6 p.m. Danny Fleming, auctioneer. x121f

### Manchester Area:

OLDER, 3-BEDROOM home, 3 miles west of Clinton. Downstairs remodeled. Completely insulated throughout. New roof, wiring, and plumbing. Small workshop. \$39,900.

ALMOST NEW custom built 3-bedroom home, with family room and attached 2-car garage. 5 acres and 30'x40' barn included. Ideal for horses. Edge of Manchester. \$48,500.

4-BEDROOM HOME, on half acre in Manchester. Remodeled with new kitchen. Large rooms. Handy to all areas. \$37,500.

CLASS AND CHARM are reflected in this lovely 4-bedroom home in Manchester. Study, 1 1/2 baths, dining room, family room, fireplace, full basement, and 2-car garage. Large patio and enclosed porch. \$55,900.

3-BEDROOM RANCH on 1 acre in Manchester. Kitchen with eating area, dining room and family room. Many possibilities with just a little help. \$27,000.

Please Call

JIM MANN.....428-8182  
ELLIS PRATT.....428-8562

Spear & Assoc., Inc.  
REALTORS  
Manchester, 428-8388

STOCKBRIDGE, 13 acres, commercial, on M-52. (517) 851-8144. 351f

### D&G Allen Excavating

Septic Tanks and Drainfields  
Back Hoe and Dozing

Sand, Gravel and Topsoil Hauled  
Phone (517) 851-8386  
or (517) 851-8278

BRICK MASON - Brick work, block work, fireplaces, chimney repairs, homes and additions. Ph. 475-2584. x441f

WANTED-Interior-exterior painting, \$5.50 per hr. or by job. Guarantee all work. Ph. 701-5751. x501f

PAINTING-Exterior and interior. Quality workmanship, free estimates, references, reasonable rates. Ph. (517) 851-7055. x481f

AMAZING "Grapefruit Pill" with Diadax plan more convenient than grapefruit. Eat satisfying meals and lose weight. Chelsea Pharmacy. -24

SEE US for transit mixed concrete. Klump Bros. Gravel Co. Phone Chelsea 475-2530, 4920 Loveland Rd., Grass Lake, Mich. x401f

TRAVEL TRAILERS - 13-ft. and up; 10x55 ft. trailers. John R. Jones Trailer Sales, Gregory, Mich. Phone 498-2655. x431f

ELECTRICAL WIRING of all types New and rewiring. Ph. 428-4855. x201f

CHELSEA-3-bedroom Ranch, 2 baths, sunken living room, family room with bar; located on Howard Rd. \$49,900. For an appointment call 475-7643. 511f

WILL DO BABYSITTING in my home. Any age. Please call 475-8331. 161f

### Buy Antiques For Christmas

### SCHAULES ANTIQUES

Furniture, Glass, China, Primitives and misc. Also appraising.

Call or by chance, 475-7362

14450 Island Lake Rd., Chelsea x23

IN THE AIR FORCE, good people are promoted, not laid-off. Jobs available in police, electronics, mechanics and clerical. Men-women, ages 17-28, no experience necessary. Call your Air Force Representative, at 973-1830. 29

67 CHRYSLER Imperial LeBaron, Classic, beautiful condition, 4-door, grey, full power. Call 475-1716, or see at 784 S. Main, Chelsea. 23

VACANCY for two elderly ladies in my licensed adult foster care home. Ph. 498-2876. 231f

CORD WOOD for sale 8 Walnut and oak, split and delivered. Ph. 475-1528 after 4 p.m. 28

### PIERSON & SONS

LICENSED GENERAL CONTRACTORS

475-8750

New Construction, Remodeling, Siding.

## WANT ADS

FOR SALE - 2-year-old Hereford bull from registered stock. Herd, 9 Hereford beef cows and 5 calves. Call after 5 p.m., 475-2986. x52  
WOULD YOU LIKE to learn another craft? Decoupage, paper tole or needlepoint. If you have two hours free and three friends phone 475-7129. x24

### The Indian Summer Is Over

Having trouble with your furnace? Give Hilltop a call. Repair jobs are given prompt attention at a fair price.

Or-perhaps a new furnace is the answer to your heating problems. Give Hilltop a call. Free estimates are happily given. You can be assured that a Hilltop job is a quality job.

Or-save a little. Do it yourself. Hilltop stocks all standard/heating parts. Advice goes along with any order. Stop in and see us.

HILLTOP, INC.  
PLUMBING, HEATING & ELECTRICAL  
Robert Shears - Master Plumber  
8316 Workner - 475-2949 24

NEED A ROOF? Call Toth Building & Remodeling, (313) 498-2178. 411f

CAR & TRUCK LEASING. For details see Lyle Chriswell at Palmer Motor Sales. 475-1301. 491f

BUILDERS-House and barn roofing; all types of roof repair; aluminum storm windows and doors, aluminum siding and gutters, awnings, porch enclosures, garage and room additions, cement work. Call Joe Hayes for free estimates, Manchester 428-8520. x181f

### Old Orchard Furniture Refinishing ANTIQUES RESTORED

Old finish removed from wood or metal safely and economically.

513 Old Orchard  
Stockbridge, Michigan 49285  
(517) 851-8713 101f

IRONING in my home in Chelsea. Ph. 426-2326 before 5 p.m. after 5 p.m. ph. 475-2673. 23

### GAR - NETT'S Flower & Gift Shop

Your Friendly Florist  
112 E. Middle St., Chelsea

PHONE 475-1400

Funeral Flowers  
Wedding Flowers  
Cut Flowers (arranged or boxed)  
Potted Flowering Plants  
Green Plants - Corsages

WE DELIVER x91f

## WANT ADS

FOR SALE-Tenor sax, Buscher Aristocrat, like new. Best offer. Ph. 475-8661. 131f  
BLACK SWAMP DIRT by the ton or yard, and backhoe work. Drain fields, basements dug. Driveways. Ph. 475-1963. x241f  
FOR RENT - American Legion Hall. \$50. Call 475-1824. 401f

### A fine selection of New and Used Cars

for immediate delivery

### Harper Pontiac Sales & Service

475-1306  
Evenings, 475-1608 401f

### Automotive Rust Proofing Cars and Trucks

Village Motor Sales, Inc.  
IMPERIAL - CHRYSLER  
DODGE - PLYMOUTH  
Phone 475-8661  
1185 Manchester Rd., Chelsea

Hours: 8 a.m. to 6 p.m.  
Tues. thru Fri. Until 9 Monday  
9 a.m. to 1 p.m. Saturday 211f

### Order Your Name Imprinted CHRISTMAS CARDS

Now and Save!

#### 10% Off

on all orders placed before Dec. 1, 1975

Wide selection.

Prices to fit any budget.

### The Chelsea Standard

300 N. Main  
Phone 475-1371 24

FOR RENT - 1- and 2-bedroom apartments at D. E. Limpert Co., Manchester. Ph. Cathy at 428-8328 between 9 a.m. and 11 a.m. x23

WOULD LIKE cement block layer. Ph. 475-2417. 23

LADIES SNOWMOBILE SUIT, \$20. Ski-Doo Bombardier, large size one-piece, worn only 3 times. Ph. 475-1275. 23

## The Chelsea Standard, Thursday, November 20, 1975 9

## WANT ADS

CERAMIC TILE - Reasonable prices. Excellent work. Ph. 426-2280. x241f  
FORD 1974 F-100 half-ton pick-up. V-8 302 cc, power steering, automatic transmission, front disc brakes, heavy duty suspension, radio, rear bumper, good condition. \$2,800 or make offer. Ph. 475-9223. x23

1968 FORD FAIRLANE New muffler, runs good. \$150. Ph. 475-2817. 24

FOR SALE-Hospital bed, in good condition, \$60. Ph. 475-7486. x24

## WANT ADS

GARAGE SALE - Nov. 22, 9:30 to 5 p.m., 317 E. Middle St. Mechanic and carpenter tools. 23  
FOR RENT to MAY 1, 1976-Beautiful 2-bedroom home on Half-Moon Lake, \$250 per mo. References required. Day 475-8681, eves 475-2718. x23  
WANTED - A job to care for an elderly gentleman or lady in their home. Ph. 475-1144. x23

FOR RENT - Year-round cottage at Cavanaugh Lake. For married couple only. No children, no pets. Ph. 475-8469 or 475-2018. 161f

# SPECIALS

1-LB. BOX  
Ritz Crackers . . . . . 60c

1-LB. PKG. SWIFT'S PREMIUM  
Sliced Bacon . . . . . \$1.62

NO. 303 CAN DEL MONTE CREAMED STYLE OR WHOLE KERNEL  
Corn . . . . . 3 for 89c

ECKRICH  
Roasted Sausage . . lb. \$1.19

REG. 15c SNICKERS, MARATHON, THREE MUSKETEERS  
Candy Bars . . . . . 6 pac 59c

# KUSTERER'S

FOOD MARKET  
DIAL 475-2721 WE DELIVER



### TODAY'S THOUGHT

By LOUIS BURGHARDT

With no reminder or prodding needed, every one has reason and should be glad to give thanks on the special day of Thanksgiving. Some people at times are inclined to measure appreciation of and for visible possessions, unmindful of intangibles for which thanks should be given. Actually, no matter what individual circumstances may be, no one can truthfully say he or she has no reason to be thankful.

It is our custom to associate food with Thanksgiving Day. Fine. But a Divine Providence has bestowed countless other blessings upon us for which all of us should be thankful. For example, no matter what the state of health, there should be gratitude for life itself. Whatever basic senses one has; sight, hearing, etc., including the capability for fun









# BOWLING NEWS



## Nite Owl League

Standings as of Nov. 17

| W                          | L  |
|----------------------------|----|
| Steele's Heating & Cooling | 26 |
| McCalla Feeds              | 26 |
| Southern Boy Take-Out      | 26 |
| Hanco Sports Center        | 26 |
| Chelsea Finance            | 26 |
| Bollinger's Sanitation     | 26 |
| Wahl's Oil                 | 26 |
| Associated Spring          | 26 |
| Norm's Body Shop           | 26 |
| Michigan Kitchen           | 26 |
| and Bathroom               | 26 |
| Ted's Standard             | 26 |
| VFW 4078                   | 26 |
| Cavanaugh Lake Store       | 26 |
| Belser's Construction      | 26 |
| LithoCrafters No. 2        | 26 |
| LithoCrafters No. 3        | 26 |
| Team No. 3                 | 26 |

200 games and over: O. Hansen, 201; E. Boku, 200; J. Hughes, 202; K. Platt, 210; G. Beeman, 204, 208, 231; H. McCalla, 200; W. Maier, 211.

500 series and over: O. Hansen, 580; G. Ahrens, 588; D. Henry, 517; J. Hughes, 505; D. Boku, 527; K. Platt, 513; D. Ctonkhitte, 211; T. Schulze, 518; A. Peterson, 506; H. McCalla, 573; F. Petsch, 501; J. Borders, 523; D. Scott, 507; J. Dickson, 502.

600 series and over: G. Beeman, 641.

## Chelsea Suburban

Standings as of Nov. 12

| W                       | L  |
|-------------------------|----|
| Waterloo Garage         | 31 |
| Chelsea Assoc. Builders | 37 |
| Dancer's                | 49 |
| Mark IV                 | 48 |
| State Farm              | 48 |
| Chelsea Drug            | 47 |
| Dairy Queen             | 47 |
| Cavanaugh Lake Store    | 42 |
| Frisinger Realty        | 41 |
| Fletcher Mobil          | 40 |
| Dana Dee-Lites          | 36 |
| Chelsea State Bank      | 34 |

150 games and over: J. Boku, 208, 157; P. Elliott, 200, 187; S. Ratzlaff, 167; E. Miller, 151; N. Packard, 168, 155, 185; A. Coppernoll, 189; D. McAllister, 187, 189; D. Keezer, 185; F. Cole, 159, 158; K. Chapman, 154; J. Huston, 150, 150; R. West, 174; R. McGibney, 161, 171; N. Prater, 158; K. Snyder, 154, 176; B. Robeson, 162, 164; A. Wood, 150; V. Harvey, 160, 189; A. Hocking, 174, 156; W. Hafner, 161; E. Beck, 175; M. Usher, 185, 188; C. Stoffer, 167; P. Harook, 150; V. Stewart, 186, 163; B. Loucks, 158; D. Keezer, 167; C. Tryand, 182; B. Beeman, 164; L. Beeman, 156.

425 series and over: P. Elliott, 530; M. Usher, 511; N. Packard, 506; J. Boku, 500; D. McAllister, 511; B. Beeman, 442; C. Stoffer, 450; V. Stewart, 497; V. Harvey, 463; A. Hocking, 472; B. Robeson, 455; K. Snyder, 479; N. Prater, 433; R. West, 457; R. McGibney, 478; F. Cole, 452; D. Keezer, 451.

## Peppermint Patties

Standings as of Nov. 15

| Standings as of Nov. 15          |       |
|----------------------------------|-------|
|                                  | W L   |
| Blue Streaks .....               | 17 7  |
| Team No. 3 .....                 | 13 11 |
| Red Barons .....                 | 10 14 |
| Super Stars ...                  | 8 16  |
| Games 70 and over: R. Loucks     |       |
| 76; M. White, 103, 70; T. Loucks |       |
| 87; D. Waldyke, 71; K. Shepherd  |       |
| 79; T. Mindykowski, 74, 84; T.   |       |
| Harook, 78; D. Rowe, 106.        |       |

Series 100 and over: R. Loucks, 135; M. White, 173; C. Baker, 103; T. Loucks, 144; D. Waldyke, 132; K. Shepherd, 139; T. Mindykowski, 158; T. Harook, 140; D. Rowe, 169.

## Junior House

Standings as of Nov. 13

| W                      | L  |
|------------------------|----|
| Jim Bradley Pontiac    | 31 |
| Smith's Service        | 29 |
| Mac Tools              | 28 |
| Boyer Automotive       | 28 |
| Mark IV Lounge         | 28 |
| Dana Maintenance       | 28 |
| Chelsea Lanes          | 28 |
| Washtenaw Engineering  | 28 |
| Ypsi Asphalt Paving    | 28 |
| Dana Demons            | 28 |
| 3-D Sales & Service    | 28 |
| Slocum Construction    | 28 |
| Delf's Paints          | 28 |
| Team No. 1             | 28 |
| Rockwell International | 28 |
| Wolverine Bar          | 28 |
| Ann Arbor Kirby        | 28 |
| Bush Cookies           | 28 |

600 series: A. Fletcher, Jr., 615; J. Harook, 615; L. Salyer, 604. 525 or over: D. Allen, 546; J. Toma, 584; D. Clark, 539; J. Eder, 546; D. Boku, 531; N. Fahrner, 541; T. Dittmar, 561; G. Beeman, 546; J. Kiemer, 532; E. Greenleaf, 532; J. Torrice, 539; F. Northrop, 592; L. Bauer, 543; P. Boham, 590; O. Cavender, 525; D. Feliks, 575; A. Hayton, 551; C. Myers, 576.

210 or over: A. Fletcher, 210; L. Salyer, 224; J. Toma, 214; J. Harook, 214, 222; T. Dittmar, 219; E. Greenleaf, 227; P. Boham, 223; D. Feliks, 214; D. Westcott, 224.

## Seven Point Mixed

Standings as of Nov. 11

| W               | L  |
|-----------------|----|
| Hi Hopes        | 27 |
| The Foxes       | 29 |
| College Dodge   | 33 |
| Elliott & Sons  | 33 |
| ZAP             | 33 |
| Fiat Tires      | 33 |
| Strike Outs     | 37 |
| Dexter Gear     | 37 |
| Bowling Wizards | 33 |
| River Rats      | 31 |
| 7 M's Bar       | 29 |
| Alley Runners   | 24 |

Men, 450 series and over: T. Steers, 513; F. Palacios, 544; G. Beeman, 213, 204, 172; M. Spence, 188; O. Imbody, 184; T. Steers, 191, 188; M. Fox, 175; A. Hansen, 182, 208, 186; W. Teachworth, 174, 203.

Women, 425 series and over: D. Beverle, 469; C. Powell, 444; G. De Smithner, 466; M. Paul, 475; C. Fox, 460; G. Harris, 439; P. Scherdt, 444; V. Guenther, 470.

Women, games of 150 and over: D. Lucas, 165; D. Beverle, 152, 156, 161; C. Powell, 163, 150; M. Paul, 170, 160; G. DeSmithner, 157, 173; C. Teachworth, 153; L. Fox, 174; C. Fox, 158, 157; G. Harris, 171; P. Fortner, 181; P. Scherdt, 152, 167; V. Guenther, 160, 178; C. Klapperich, 192.

## Charlie Brown Prep

Standings as of Nov. 15

| W                      | L  |
|------------------------|----|
| Village Motor Strikers | 14 |
| Bullpups               | 13 |
| The Monkeys            | 13 |
| Dils' Pickles          | 12 |
| Super Strikers         | 9  |
| Pin Crackers           | 8  |
| Rolling Stones         | 8  |
| Fantastic Five         | 8  |
| Unbeatable             | 7  |
| Pin Sweepers           | 7  |
| Purple Stars           | 5  |
| All Stars              | 4  |

Girls, high games: D. Steinaway, 127; L. Mepians, 121, 100; D. Alexander, 117; A. Check, 118; M. Alexander, 111.

Boys, high games: R. Schulze, 198, 135; K. Hegadorn, 178; J. Krichbaum, 169; D. Hermon, 147; J. Dils, 146.

## Tri-City Mixed

Standings as of Nov. 14

| W                      | L  |
|------------------------|----|
| Fletcher & Baker       | 48 |
| Frealin Craft & Co.    | 47 |
| Stivers                | 45 |
| 3-D Sales & Service    | 43 |
| The Proud Americans    | 42 |
| Burnett & Sparks       | 42 |
| Smith's Service        | 41 |
| M & M                  | 41 |
| E. P. Smith Pallet Co. | 40 |
| Chelsea Cleaners       | 37 |
| Portage Hardware       | 35 |
| Bable & Bable          | 35 |
| Palmer's Union 78      | 35 |
| Real Estate One        | 34 |
| V.F.S.                 | 34 |
| Little Rooster         | 32 |
| Mel's Roofing          | 31 |
| McEwan & Mock          | 31 |

500 series, men: J. Baker, 558; S. Cavender, 576; F. Cooper, 563; C. Detting, 532; P. Fletcher, 511; J. Hughes, 544; B. Maier, 502; C. Parish, 529; B. Mock, 516; A. Sannes, 509; D. Scott, 500; T. Schulze, 507; K. Vasas, 520; R. V. Worden, 538.

200 games, men: J. Baker, 210; S. Cavender, 214; F. Cooper, 203; C. Detting, 200; A. Sannes, 203; K. Vasas, 216.

450 series, women: M. Ashmore, 466; R. Bable, 457; J. Brieger, 456; G. Detting, 454; A. Hocking, 479; C. Hodges, 487; B. Parish, 508; M. Westcott, 536.

150 games, women: M. Ashmore, 186-157; R. Bable, 184; K. Barksdale, 164; J. Brieger, 188, 164; J. Burnett, 166; J. Collins, 162; G. Detting, 150, 183, 151; K. Fletcher, 171; A. Hocking, 171, 164; C. Hodges, 176, 174; J. Mock, 163; B. Parish, 179, 160, 169; B. L. Scott, 171; E. Sparks, 151; E. Findall, 167; M. Westcott, 178, 178, 182.

## Senior House

Standings as of Nov. 17

| W                      | L      |
|------------------------|--------|
| Mark IV Lounge         | 57 1/2 |
| S. J. Custom Leather   | 55     |
| Gambles                | 49     |
| Dana's Top Five        | 47     |
| Luke's Sporting Goods  | 48 1/2 |
| Sylvan Center          | 44     |
| Village Books          | 41     |
| Schneider's Grocery    | 39     |
| Frank Groh's Chevrolet | 38     |
| Chelsea Lumber         | 36     |
| Washtenaw Crop Service | 35     |
| IPSCO                  | 32     |
| Sams, Inc.             | 31     |
| Village Motor Sales    | 30     |
| Walt's Barber Shop     | 30     |
| Bauer Builders         | 29     |
| Dexter Automatics      | 24     |
| Seltz's Tavern         | 22     |

600 series: G. Packard, 606. 525 and over series: O. Cavender, 575; L. Salyer, 533; J. Fortner, 550; R. Spaulding, 542; G. Burnett, 599; J. Lyleria, 545; R. Lentz, 555; G. Beeman, 549; R. Buckingham, 536; G. Linebaugh, 542; L. Bauer, 586; W. Westphal, 552; G. West, 551; J. Harook, 539; R. Kiel, 530; N. Fahrner, 567; D. Pasquantonio, 562; J. Eder, 568.

210 and over games: O. Cavender, 211; L. Bauer, 222; G. Beeman, 214; R. Buckingham, 238; G. Burnett, 210; N. Fahrner, 213; W. Westphal, 218; G. West, 211; E. Mummel, 239; J. Eder, 228; G. Packard, 213.

## Rolling Pin

Standings as of Nov. 18

| W                 | L      |
|-------------------|--------|
| Pots              | 28     |
| Moppper Uppers    | 26 1/2 |
| Dish Rags         | 26     |
| Egg Beaters       | 25     |
| Grinders          | 25     |
| Kitchen Kapers    | 24     |
| Sugar Bowls       | 24     |
| Sporadic Spatulas | 23     |
| Jelly Rollers     | 23     |
| Spooners          | 22     |
| Mixers            | 21     |
| Blenders          | 21     |
| Kookie Cutters    | 21     |
| Jolly Mops        | 21     |
| Poachers          | 19     |
| Coffee Cups       | 18     |
| Beaters           | 16     |

425 and over series: L. Voita, 438; C. Shepherd, 461; J. Shepherd, 482; E. Nelbauer, 479; H. Karns, 464; P. Borders, 455; S. Parker, 471; D. Dirlam, 438; E. Williams, 456; R. Musbach, 450; P. Wurster, 435; C. Dmoch, 464; D. Bable, 425; D. Butler, 451; D. Ringe, 428; G. Clark, 434; B. Marsh, 448; J. Boku, 437; P. Harook, 434; S. Bwen, 468.

150 and over games: A. Classon, 158; L. Voita, 158; C. Shepherd, 206; R. Foster, 156; J. Shepherd, 163, 179; G. Brier, 157; E. Reynolds, 160; E. Nelbauer, 151, 164, 164; H. Karns, 182, 157; P. Borders, 168; S. Parker, 151, 172; D. Dirlam, 160; R. Cook, 152; E. Williams, 161, 159; R. Musbach, 170; P. Wurster, 157, 160; C. Dmoch, 187; D. Bable, 159; D. Butler, 155, 191; D. Ringe, 162; G. Clark, 181; B. Marsh, 174, 152; J. Boku, 152; L. Keezer, 150; P. Harook, 150.

## Leisure Time League

Standings as of Nov. 13

| W               | L      |
|-----------------|--------|
| Rug Rats        | 29     |
| Unpredictables  | 27     |
| Sugar Loafers   | 25     |
| Misfits         | 24     |
| The Lakers      | 23 1/2 |
| Crackpots       | 23     |
| Four Stooges    | 22 1/2 |
| Highly Hopefuls | 21     |
| Slowpokes       | 20 1/2 |
| Roadrunners     | 18     |
| Holy Rollers    | 16     |
| Lady Bugs       | 14 1/2 |

200 games: K. Haywood, 202.

140 games: J. Anderson, 141; J. Delagrang, 150; D. Thompson, 168, 143; K. Haywood, 158; W. Wheaton, 165, 148; D. Hafner, 152; E. Haydock, 169; J. Mull, 168, 158, 145; W. Trapp, 147; N. Primrose, 145; M. O'Donnell, 149, 185, 149; J. Stapish, 164, 140, 142; S. Weston, 142, 151; C. Kuzon, 164; P. Weigang, 143, 149; B. Tison, 140; M. Herrin, 143; S. Brown, 157, 160; D. Dault, 146, 170, 175; A. Vanderwaard, 141; J. Barkley, 140, 160; E. Williams, 144, 140; P. Whitesall, 141; S. Centilli, 158, 148.

400 series: D. Thompson, 447; K. Haywood, 497; V. Wheaton, 413; D. Hafner, 421; E. Haydock, 423; J. Mull, 467; M. O'Donnell, 483; J. Stapish, 466; S. Weston, 417; P. Weigang, 414; S. Brown, 454; D. Dault, 491; L. Haller, 402; J. Barkley, 423; S. Centilli, 423.

## Women's Bowling Club

Standings as of Nov. 12

| W                       | L      |
|-------------------------|--------|
| Parish's Cleaners       | 39     |
| Chelsea Milling         | 36     |
| Washtenaw Engineering   | 33     |
| Jiffy Mixes             | 33     |
| Thompson's Pizza        | 33     |
| Palmer Ford             | 32     |
| Norris Electric         | 28     |
| Lloyd Bridges Chevrolet | 26     |
| Wolverine Bar           | 25 1/2 |
| Amway                   | 25 1/2 |
| Chelsea Grinding        | 24     |
| Larry's Roadside Market | 23 1/2 |
| Mark IV                 | 23     |
| Klink Excavating        | 23     |
| Rushing's Temp. Help    | 19     |
| Norm's Barber Shop      | 17     |
| Joe & Judy's            | 15     |
| Glenn's Mobil           | 12 1/2 |

450 series or over: R. Hummel, 570; C. Bradbury, 511; P. Fitzsimmons, 510; N. Packard, 499; N. Kern, 493; E. Whitaker, 489; K. McCalla, 481; J. Norris, 480; D. Alber, 480; H. Morgan, 478; L. Orlovski, 470; B. Larson, 464; P. Wurster, 462; B. Fritz, 460; S. McCalla, 459.

150 games or over: R. Hummel, 185, 201, 184; C. Bradbury, 163.



NEW! Dutch Boy Spray-on Enamel



DRIES IN 15 MINUTES!

- Great for hard-to-get-at areas - wicker furniture, decorative metal work, sports equipment.
- New Fanspray® aerosol can lets you spray faster.
- Smooth, professional gloss finish.
- Covers more surface per can.
- Wide range of fade-resistant colors.

You will remember the quality of Dutch Boy paints long after the price is forgotten.

**MERKEL**  
Home Furnishings

**SOUTHERN BOY MANOR MOTEL**  
Efficiency Units - By Day, Week, or Month  
13190 M-52  
PHONE (517) 851-4213  
(2 miles south of Strickbridge)

167; C. Brightwell, 155; S. Bwen, 160, 157, 151; N. Hohn, 159, 153; S. Severn, 162.

## Junior Swingers

Standings as of Nov. 15

| W                 | L  |
|-------------------|----|
| Boone's Farm Five | 26 |
| Rods IV           | 23 |
| Team No. 10       | 23 |
| Women Libbers     | 22 |
| Team No. 2        | 21 |
| Boyer Automotive  | 18 |
| Born Losers       | 15 |
| Fantastic Five    | 14 |
| Team No. 1        | 11 |
| Team No. 9        | 9  |

Girls, high games: M. Northrop, 177; S. Schulze, 168; K. Tobin, 168; C. Collins, 159, 151; N. Wideman, 154.

Girls, high series: C. Collins, 445;

155, 193; P. Fitzsimmons, 178, 180, 154; N. Packard, 199, 172; N. Kern, 168, 164, 161; E. Whitaker, 189, 162; K. McCalla, 157, 175; J. Norris, 172, 165; D. Alber, 166, 178; H. Mirgan, 163, 200; L. Orlovski, 156, 150, 164; B. Larson, 176; P. Wurster, 199; B. Fritz, 158, 162; S. McCalla, 191; J. Schleede, 154; M. Sutter, 163; D. Elsenbeiser, 152; A. Fahrner, 156; J. Rowe, 162; B. Fike, 159; D. Fouty, 189; D. Frisbie, 152; T. Kenney, 150; A. Elsele, 169; A. Knickerbocker, 157; B. Stahl, 152; Jean Hafner, 184; P. Poertner, 159; J. Cook, 181; S. Zink, 151; M. Kozminski, 160 A. Judson, 153; D. Verwey, 155.

## Sunday Swingers

Standings as of Nov. 16

| W                 | L  |
|-------------------|----|
| Town Clowns       | 36 |
| T & M             | 31 |
| Sidekicks         | 27 |
| C & A             | 26 |
| Bottom-Up         | 26 |
| Sour Krauts       | 25 |
| Goof-Ups          | 23 |
| Pin-ups           | 20 |
| Need-N-Luck       | 20 |
| Spuds & Suds      | 19 |
| Irregulars        | 19 |
| Friday Funny Farm | 19 |
| The Innates       | 17 |
| Pin Pals          | 17 |
| Extrajones        | 16 |
| Rockin-Pins       | 16 |
| Pin Problems      | 12 |
| Handicapps        | 9  |

Men, over 175: J. Settle, 200; J. Arnold, 184; D. Cumper, 196; J. Coburn, 177; M. Niebauer, 179; B. Achtenburg, 176; D. DuRussel, 175; J. Friday, 179; D. Friday, 188; W. Brown, 205.

Men, over 500: J. Settle, 512; D. Cumper, 522; D. Friday, 509; W. Brown, 520.

Women, over 150: R. McGibney, 182, 160, 164; S. Settle, 165; J. Johnston, 158; S. Arnold, 163, 159; D. Coburn, 177; S. Achtenburg, 151; S. Centilli, 152





**FIVE POINTER:** 19-year-old Richard Clark bagged this five point 170 pound buck at 7:30 a.m. Saturday morning, only minutes after the 1975 firearm season had begun. Clark reported that he is especially proud of this one; taken on M-52 and Clark Lake Rd. It's the first deer he has ever bagged.

## St. Louis School Notes

The boys at St. Louis school, with the help of their art teacher, Mrs. Falkenstein, will create Christmas cards of their own design this year to sell to their parents and friends at the cost of 10 cents each. Fr. Umberto Mellare remarked that the boys are especially pleased with this project. Persons who might wish to purchase cards from the school may contact the father to place orders.

A new medium in education has been purchased for the boys at St. Louis school. A combination of radio and TV, "System 80" works on instructing the boys on matching words and numbers and on spelling. "It makes their learning all that more enjoyable," the father remarked.

While the boys were on a weekend home, the staff and priests

at St. Louis school enjoyed hearing a performance of the Vienna Boys Choir in Detroit. Tickets for the performance were compliments of Mr. Rudy of Ann Arbor.

Over the past week-end the sisters of St. Louis school were the guests of Mrs. Robbins at St. Paul's United Church of Christ for a bell concert.

The basketball team is practicing for their season which will open tonight with a game against the 7th graders in the Dexter public schools. Fr. Umberto remarked that basketball is a favorite sport for the boys. According to the father, prior to the development of an interschool sports league this fall, basketball was the only sport in which the boys had an opportunity to compete in with other schools.



## NORTH ELEMENTARY SCHOOL NOTES

### FROM MR. BENEDICT—

The popcorn sale has gone well and is now over. Teachers are now considering audio-visual purchases they can make with the profits.

We are saving Campbell labels this year. Schools may turn these labels in for audio-visual equipment, P.E. equipment, or some kinds of teaching aids. It takes a lot of Campbell labels to get this equipment, so all the help you can give on this will be appreciated. Labels to save are from Campbell's soups No. 1 can, 28-oz. can, 50-oz. can, chunky soups and Campbell beans (6 kinds). Later on, we may ask for some volunteers to help count the labels.

### SPEECH LANGUAGE SERVICES

Speech and Language Services during the 1975-76 school year will be provided on a block time schedule. The therapist, Mrs. Geni Adams, will spend alternate quarters between North and South, beginning at South and closing the year at North. Students enrolled in the program at Beach school will be seen during the second and fourth quarters. The Chelsea High students on her case load will be seen during the entire year.

Purpose of block time scheduling is to provide more extensive services. It allows for more intensive work with students, thus increasing and encouraging carry over of skills taught and students' progress. This scheduling also permits more time for evaluation of students' needs, consultation with classroom teachers and parents, and planning time for students' programs.

Students will be seen for 1/2 hour to 45 minutes from two to five times a week depending on the severity of the children's needs.

### KINDERGARTEN—

Reporters: All the children  
Teachers: Mrs. Michelson, and Mrs. White

So much going on! We've moved and we think our new rooms are beautiful. Come and see for yourself!

Last Thursday, the bus took us to the Medical Center. Doctor Barton showed us the dental office and his equipment. We learned how important it is to take care of teeth.

We walked to the fire station. Mr. Adams, Mr. Steele and Mr. Hafner told us about fire fighting, and answered our questions. We squirted the hose and climbed through the biggest truck. Mr. Spiegleberg was in the office. He has been a volunteer fireman for 62 years. Oh, did you know we saw eight fire hydrants on the way to the station?

The Frisingers and Kirk Lawton's mother were waiting for us at the farm. Mr. Frisinger gave us a hayride to the oak grove. We walked back along the paths through the woods and along the fields of corn. Then we had cider and the donuts we had made the day before. It was a beautiful day. We learned a lot about nature (through our walks near school and from objects and plants and animals we bring to school also). We ironed leaves for mobiles or window decorations. Occasionally, Mr. Coelius' students come in to tell us stories. Overheard from one of the children "They are pretty good story tellers."

Halloween was exciting because of the parade, the party and the surprises. Mothers who helped get dressed up too, and paraded

through the other grades with us. We did an experiment with our two jack-o-lanterns and a candle, and roasted the pumpkin seeds. They were delicious. In the morning, Mrs. Jarvis played her accordion and we sang. Mr. Mayer brought the pep band over in the afternoon. The music was great. They showed us the instruments and how they sounded alone. Everyone had a turn to beat the drum. It would be special if they could visit the morning kindergarten, also.

Most of us can read our own names, know our colors, shapes and something about numbers.

The people who help us keep in contact with parents are Mrs. LaVigne, Garen, Sheffield, Monroe, Kruse, Lawton, Schwelin, Kyle, Lewis and Kuzon.

Mr. Brier is a big help with anything that concerns the buses. Ray Stoddard and Dawn Bucholz are student tutors from the high school.

### FIRST GRADES—

Teachers: Mrs. Packard, Mrs. Peebles and Mrs. Stala  
Our North school first grades were the lucky ones this year in that our rooms were untouched by the extensive construction on our schools. We could get settled and start right in. However, the parents of Mrs. Packard's children are aware that her class moved across to the previous kindergarten room when it became available last month. There will be a later open house when the parents can see the entire school. We are sure that you will be impressed with our additions as we are.

Late birthday greetings to our September birthday children go to: Kirsten Erickson, Jon Lane, Philip Patterson. Our October birthday children who are a whole year older now are: Chris Ruth, Chris Zangara, Shane Huttling, Krista Singh. Sharing the month of November are the birthday children: Michael Ellenwood, Bryan Kidd, Annette Duhamel, Debby DeVoe, Chris French, Timothy Schultz, Scott Wolak, Randy Ferry, Robin Mock.

### SECOND GRADE—

Teacher: Mrs. Walton  
We are working hard in our new reading books. We are finding out how important it is to lis-

ten to or read the directions.

We have to learn to spell eight new words each week in our spelling book. We have a test every Friday on our new words. We are enjoying Magic Circle again this year. We can talk

about behavior and feelings.

Darin brought in some very interesting fossils for us to look at. We want to thank Brad's mother, Mrs. Bauer for the nice Halloween party. The relay races were fun. We lost one girl when Lorie

Coley moved to Danaville; but we have a new girl, Laura Hecker now.

Anne and Ronald had birthdays in October, and Beverly and Pam will have their birthdays in November.

## HURON FARM'S GOLD BARN CIDER MILL

3431 N. ZEEB RD. - DEXTER

Announces Its NEW

## COLD STORAGE

to insure crisp, fresh fruit through the year.

We also have

Freshly Pressed Cider - Hot Donuts - Taffy Apples - Honey  
All Varieties Apples - Seasonal Fruit

OPEN DAILY



Enjoy  
award-winning  
styling



**Spirit of '76 from Magnavox**  
Design so authentic, it's been awarded the  
Early American Society Commendation

A unique group of heirloom stereo and television furniture designs commemorating our country's Bicentennial. The Magnavox Spirit of '76 Collection — a beautiful way to take pride in our nation's heritage... and your home.

**A. Queen Anne Stereo — model 6565.** Graceful Colonial elegance with FM/AM radio-phonos, 8-track tape player plus four speakers.

**B. Dry Sink Stereo — model 6564.** A delightful re-creation of yesteryear with today's advanced audio electronics: FM/AM radio-phonos, 8-track tape player and four speakers.

**C. Dry Sink Color TV — model 4574.** 25" diagonal screen, 100% solid-state chassis, Super Bright Matrix Picture Tube plus Videomatic one-button tuning system and electronic eye.

**D. Early American Table TV — model 4464.** Shown on optional (at extra cost) trestle bench. 19" diagonal screen, 100% solid-state chassis, Precision In-Line Tube plus Videomatic one-button tuning system and electronic eye.

**E. STAR™ System Color TV Door Chest — model 4885.** With the most significant breakthrough since color. No other color TV is more advanced. Selected Tuning at Random. In-

stant, accurate pushbutton selection of any UHF/VHF channel.

**F. Spice Chest Stereo — model 6563.** A slender column of superb sound from FM/AM radio or 8-track cartridges. Four speakers.

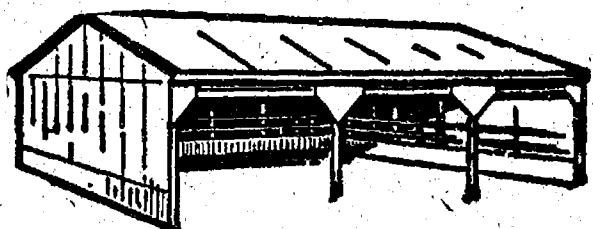
**G. Blanket Chest Stereo — model 6561.** Replicas of Pennsylvania Dutch folk art adorn this unique stereo FM/AM radio-phonos and 8-track player. It has four speakers, too!

**Magnavox**  
Quality in every detail

## POLE BUILDINGS

(GO UP EASILY...ECONOMICALLY)

ANY TYPE - ANY STYLE - ANY SIZE  
Residential - Agriculture - Commercial  
PROMPT CONSTRUCTION DATES  
Low prices and high quality workmanship.



## OWEN CUSTOM BUILDERS

LICENSED & INSURED - MANY SATISFIED CUSTOMERS  
JACKSON (517) 769-2669

## NEW HOURS

Monday thru Friday, 8 a.m. to 6 p.m.

Saturday, 8 a.m. to 8 p.m.

Complete Line of Automotive

## PARTS and ACCESSORIES

- ★ AP EXHAUST SYSTEMS
- ★ GABRIEL SHOCKS
- ★ BORG-WARNER IGNITION
- ★ WAGNER BRAKES
- ★ MOOG CHASSIS PARTS
- ★ AC - DELCO
- ★ VICTOR GASKETS
- ★ GATES BELTS & HOSES
- ★ ARROW ELECTRICAL PRODUCTS
- ★ CHAMPION SPARK PLUGS
- ★ ROCKWELL POWER TOOLS
- ★ GOODYEAR TIRES

SPECIAL THRU NOVEMBER

GABRIEL RED RYDER

## SHOCKS

Buy 3 - Get 4th FREE!



## CHELSEA AUTOMOTIVE

1414 S. Main, Chelsea

Phone 475-9106

# HEYDLAUFF'S

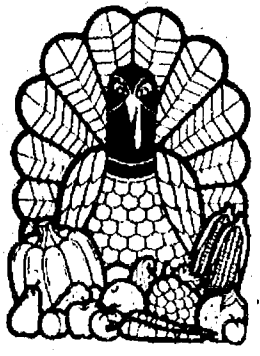
113 North Main St., Chelsea

Phone 475-1221

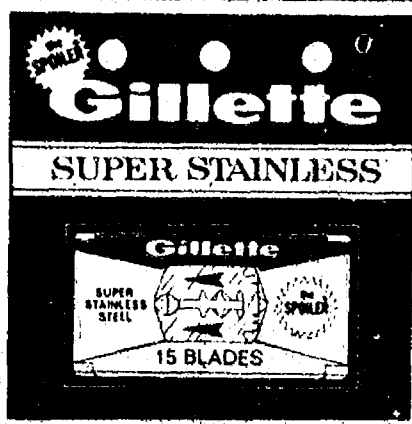




## HEALTH & BEAUTY AIDS



**Holiday Buys**



5 Blades 69¢  
99¢ Value  
15 Blades \$1.89  
\$2.49 Value

### JOHNSON'S BABY SHAMPOO



16 ounce  
\$2.89 Value

**\$1.98**

### PLAYTEX® TAMPONS DEODORANT Regular or Super

Pack of 30 \$1.59  
\$2.28 Value

Pack of 16 88¢  
\$1.34 Value



### VICK'S

#### FORMULA 44 COUGH MIXTURE

8 oz. - \$3.25 Value **\$1.98**

#### FORMULA 44-D COUGH MIXTURE

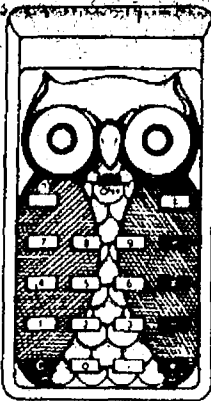
6 oz. - \$2.89 Value **\$1.88**



NOVUS

### Quiz Kid

Electronic Learning Machine by mail for \$9.95 when you buy one any size Crest, Secret, Prell Concentrate, or Liquid Prell.



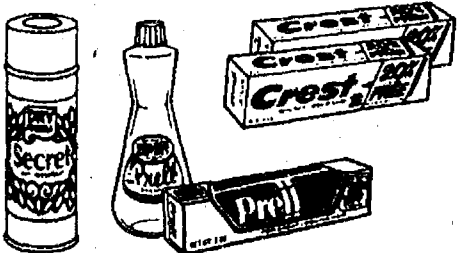
See our display for complete details and required certificate. Mail in by February 7, 1976.

PRELL CONCENTRATE 5 oz. - 20¢ off label **\$1.18**

PRELL LIQUID 11 Oz. - 20¢ off label

SECRET DEODORANT 7 oz. - 35¢ off label **88¢**

SECRET ANTI-PERSPIRANT 9 oz. - 35¢ off label **97¢**



### CREST TOOTHPASTE

Reg. or Mint 8.75 oz. Tube

**97¢**

RIGHT GUARD STICK DEODORANT 2 1/2-oz. **98¢**

### MISS BRECK HAIRSPRAY

Reg., Super, Uncent, Hard to Hold, Ultimate

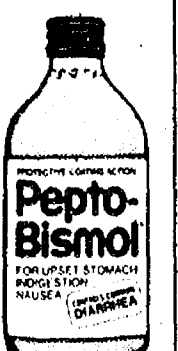
11 oz. Aero **98¢**  
\$1.53 Value



### PEPTO-BISMOL

8 oz. liquid  
\$1.45 Value

**99¢**



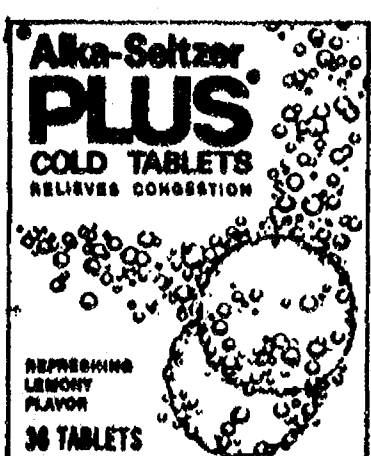
36 Tablets  
\$1.43 Value

**99¢**

### CEPACOL MOUTHWASH

20 ounce  
\$1.82 Value

**8¢**



### Alka-Seltzer PLUS COLD TABLETS

**\$1.19**

36-CT  
\$1.50 Value

# Holiday Food Buys



**Polly's MASTER MARKETS**

1101 M52  
CHELSEA

201 PARK  
VANDERCOOK LK.

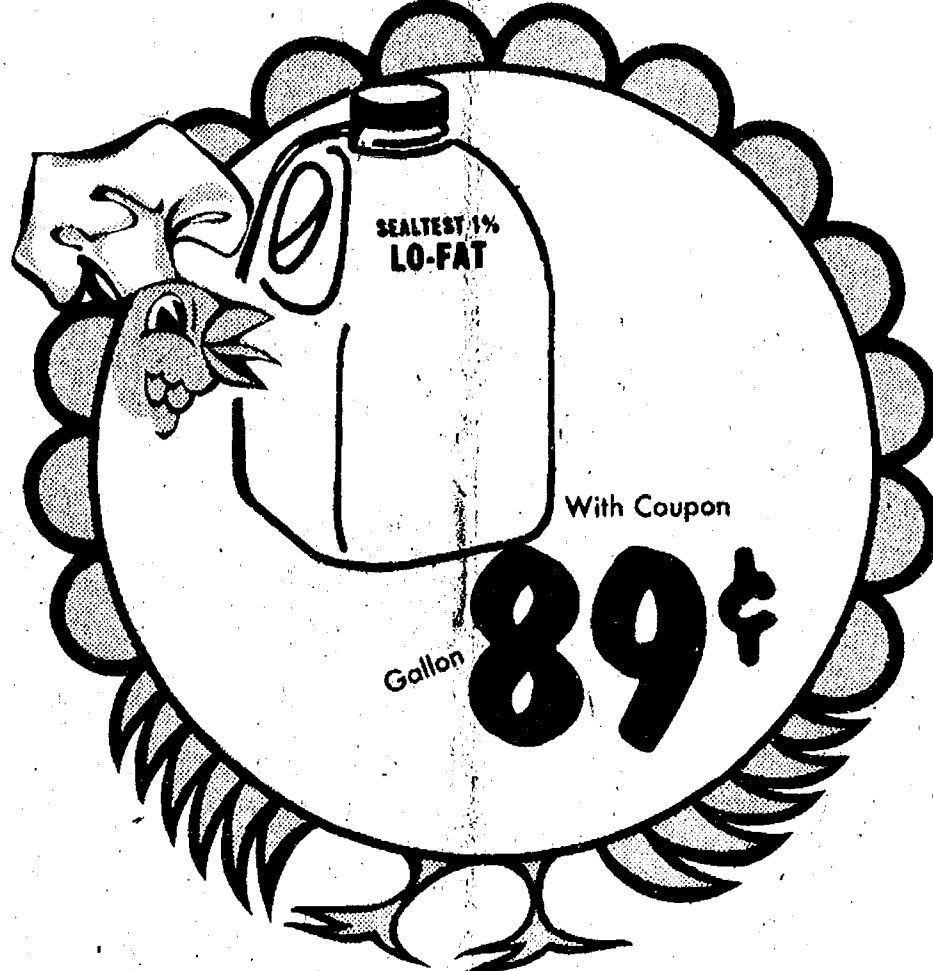
1621  
Spring Arbor Rd.  
JACKSON

960  
N. WEST AVE.  
JACKSON

115  
W. PROSPECT ST.  
JACKSON

1809  
E. MICH. AVE.  
JACKSON

ALL COUPON PRICES EFFECTIVE THRU SATURDAY NOVEMBER 22ND, 1975. WE RESERVE THE RIGHT TO LIMIT QUANTITIES TO REASONABLE AMOUNTS. NO SALES TO DEALERS.



With Coupon

**89¢**

Gallon



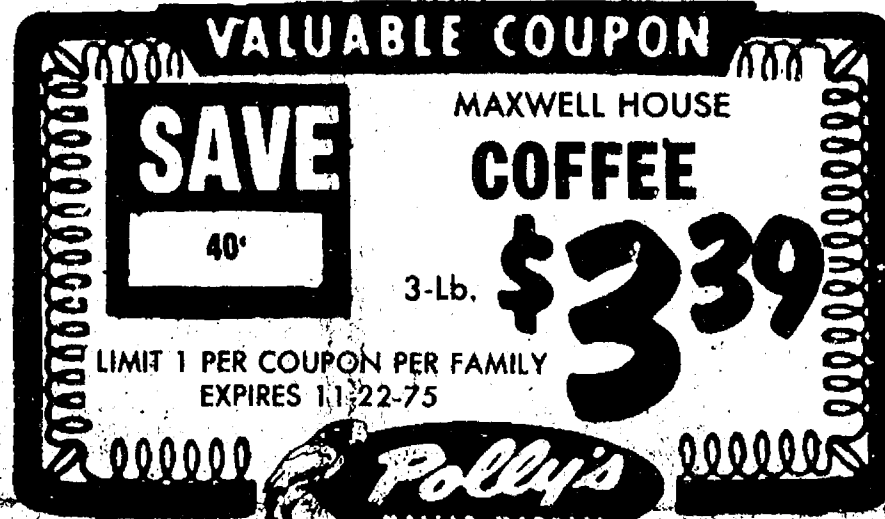
**SAVE UP TO 92¢**

### MILK

Gallon

**89¢**

LIMIT 2 PER COUPON PER FAMILY EXPIRES 11-22-75



**SAVE 40¢**

MAXWELL HOUSE

### COFFEE

3-Lb.

**\$3.39**

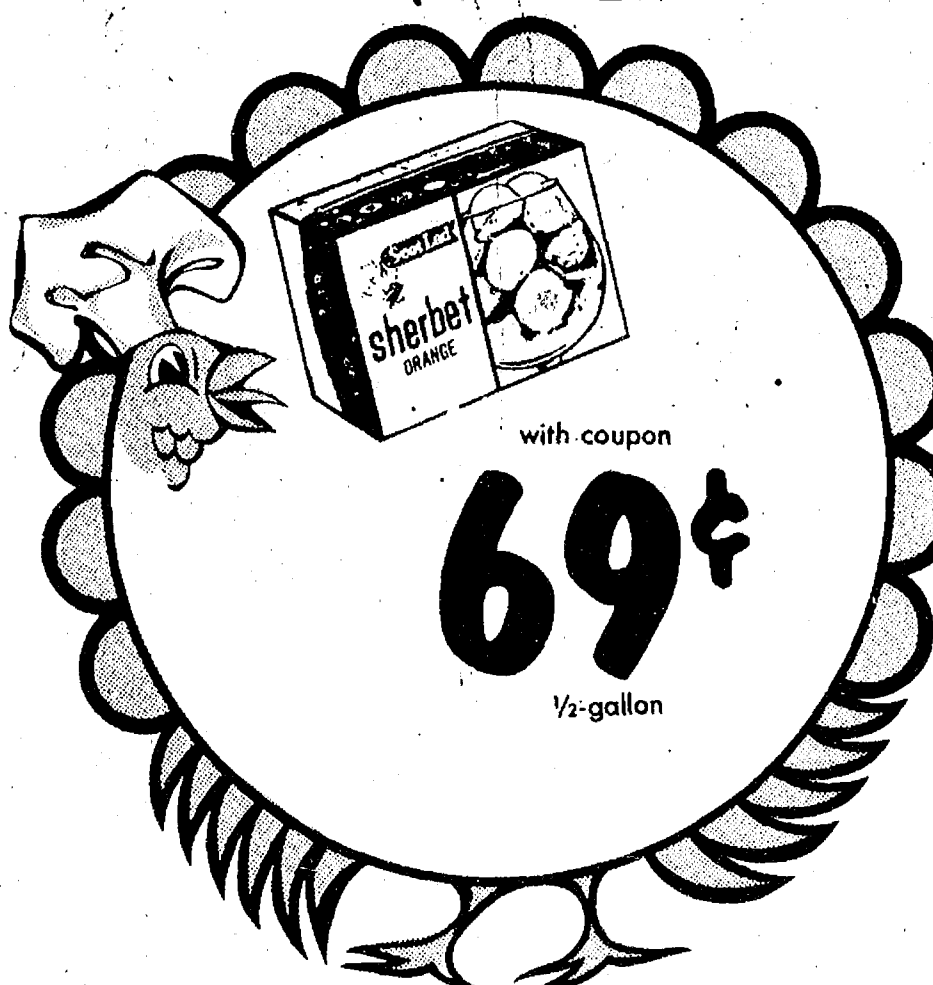
LIMIT 1 PER COUPON PER FAMILY EXPIRES 11-22-75



With Coupon

**\$3.39**

3-Lb.



with coupon

**69¢**

1/2-gallon



**SAVE UP TO 60¢**

### SHERBET

1/2-gallon

**69¢**

LIMIT 3 PER COUPON PER FAMILY EXPIRES 11-22-75



**SAVE UP TO 88¢**

BANQUET

### PIES

Pumpkin or Mince

8-oz.

**49¢**

LIMIT 4 PER COUPON PER FAMILY EXPIRES 11-22-75



8-oz.

**49¢**

with coupon



with coupon

**99¢**

16-Oz.



**SAVE 30¢**

### WALNUTS

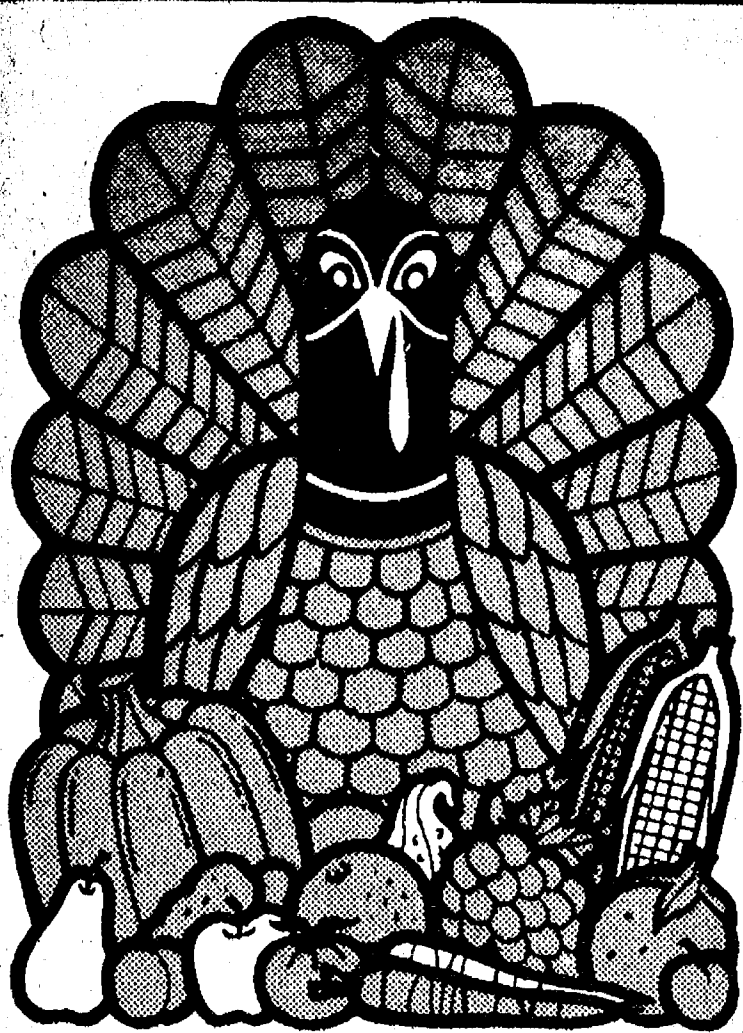
16-Oz.

**99¢**

LIMIT 1 PER COUPON PER FAMILY EXPIRES 11-22-75





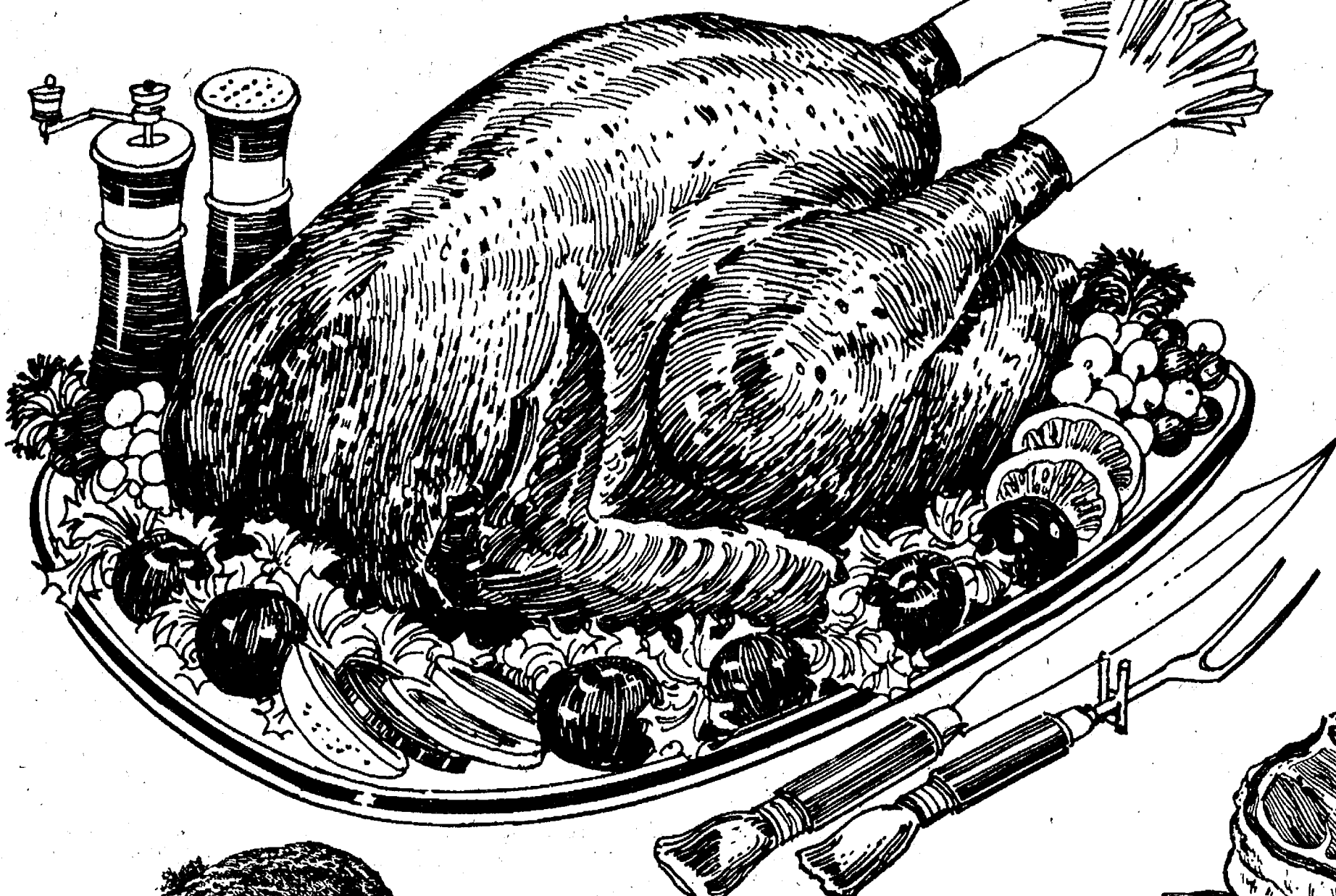


# Holiday Food Buys



| Polly's MASTER MARKETS         |                                   |                                     |
|--------------------------------|-----------------------------------|-------------------------------------|
| 1101 M52<br>CHELSEA            | 201 PARK<br>VANDERCOOK LK.        | 1621<br>Spring Arbor Rd.<br>JACKSON |
| 960<br>N. WEST AVE.<br>JACKSON | 115<br>W. PROSPECT ST.<br>JACKSON | 1809<br>E. MICH. AVE.<br>JACKSON    |

## Holiday\* TURKEY

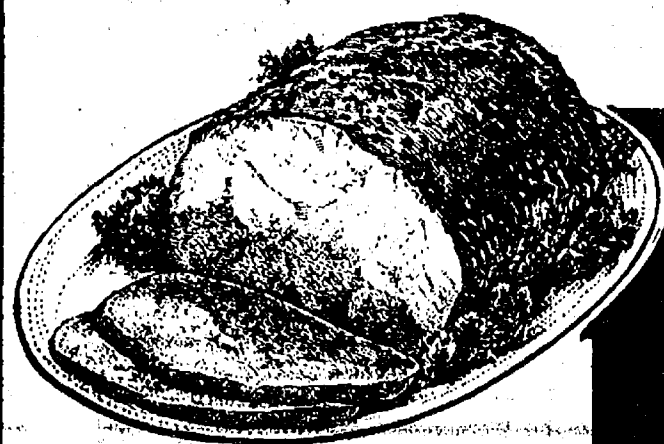


Swift Premium  
**BUTTERBALLS** 18-Lbs. and up **69¢** Lb.

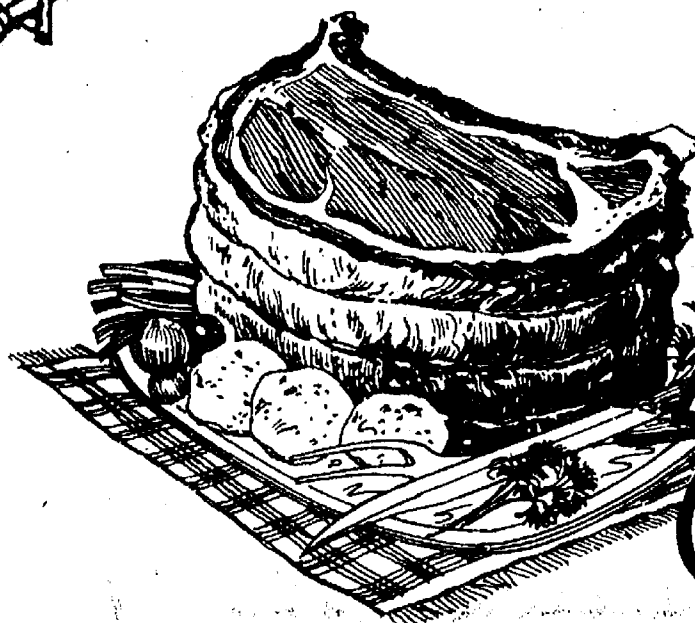
|                            |                             |                             |
|----------------------------|-----------------------------|-----------------------------|
| 5-12-Lb.<br><b>79¢</b> Lb. | 12-14-Lb.<br><b>75¢</b> Lb. | 16-18-Lb.<br><b>73¢</b> Lb. |
|----------------------------|-----------------------------|-----------------------------|

Gold Crest  
**TURKEY** 18-Lbs. & Up **59¢** Lb.

|                            |                             |                             |
|----------------------------|-----------------------------|-----------------------------|
| 5-12-Lb.<br><b>69¢</b> Lb. | 12-14-Lb.<br><b>65¢</b> Lb. | 16-18-Lb.<br><b>63¢</b> Lb. |
|----------------------------|-----------------------------|-----------------------------|

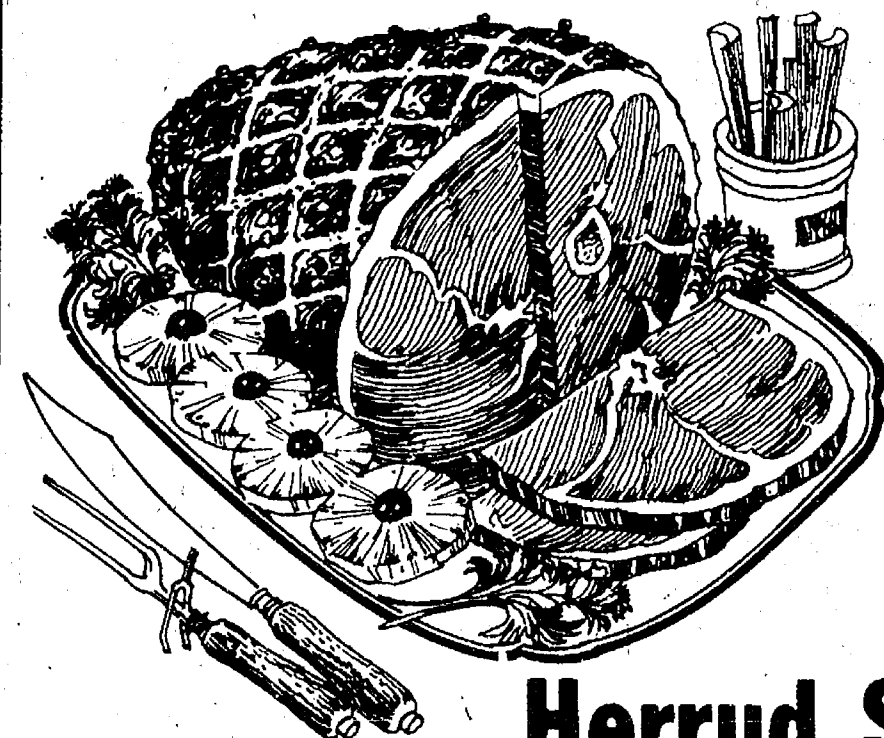


SHENANDOAH BREAST  
**TURKEY ROAST** 2-Lb. Box **\$3.29**  
SHENANDOAH THIGHS & BREAST  
**TURKEY ROAST** 2-Lb. Box **\$3.09**



POLLY PRIDE QUALITY  
**STANDING RIB ROAST**

U.S.D.A. Government Inspected  
**Polly's Pride BEEF** **\$1.49** Lb.



## Holiday\* HAM

**Herrud Semi Boneless**

WHOLE or HALF Lb.

**\$1.39**

**Farmer Peet Bonanza**

**\$1.69** Lb.

Armour Star  
**CAN HAM** 5-Lb. Can **\$9.99**

The Best You Can Buy



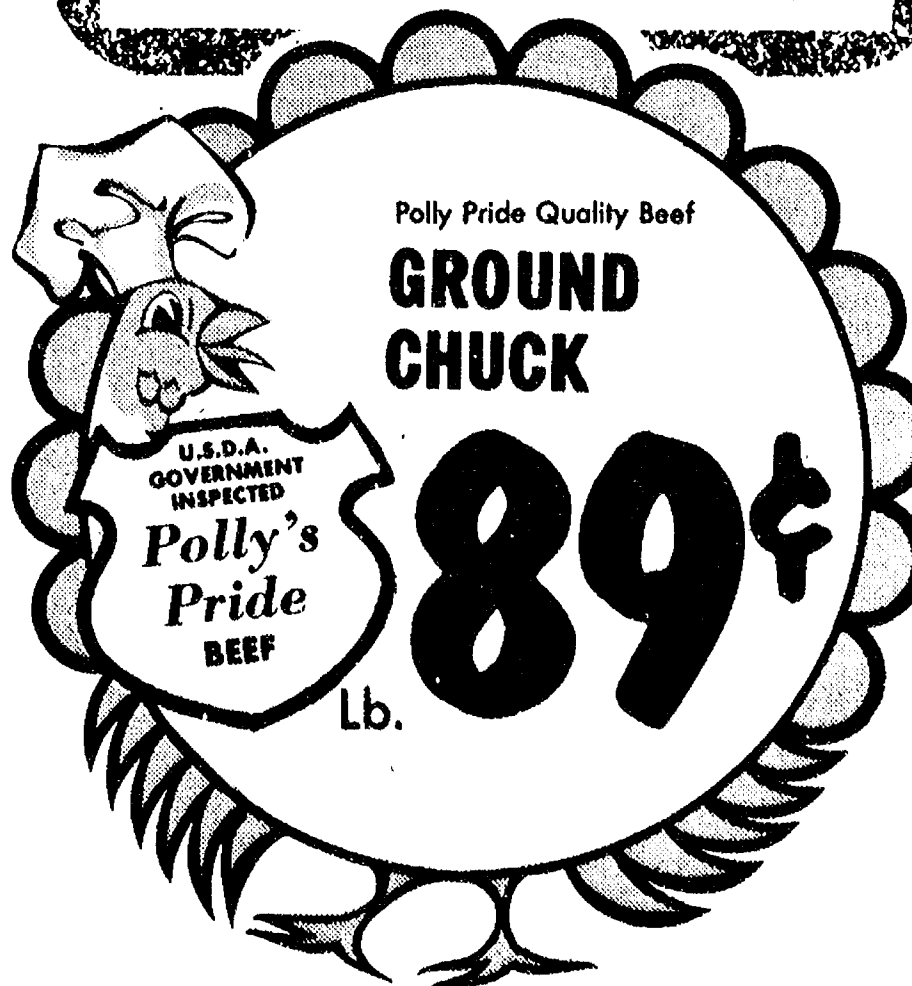
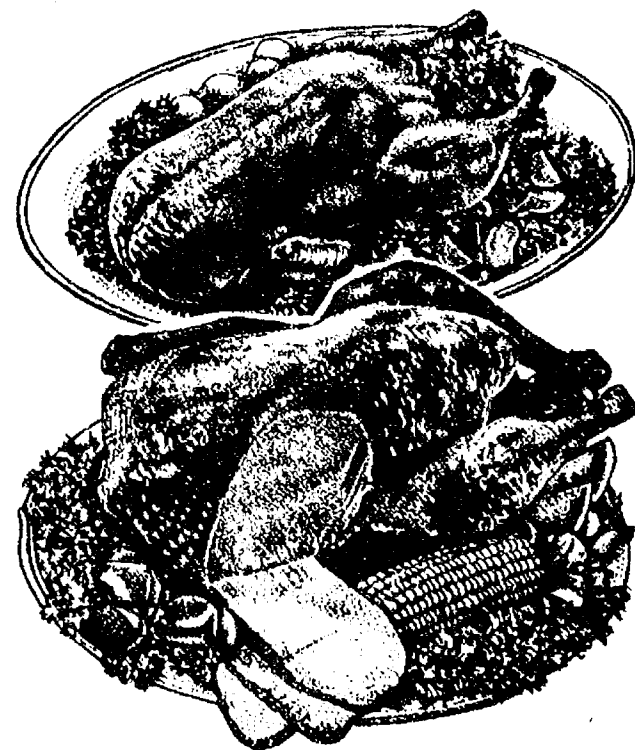
Government Inspected  
Fresh  
**STEWING HENS**

**69¢** Lb.

WE HAVE A COMPLETE SELECTION OF

## Holiday\* POULTRY

DUCKS • GEESE • CAPONS • OYSTERS  
STEWING CHICKENS • CORNISH HENS  
ROASTING CHICKENS • STUFFED TURKEYS  
TURKEY ROASTS • BAKING HENS



Haines Frozen  
**OYSTERS** 10-Oz. Can **\$1.29**

**LIVE LOBSTERS**  
Available at our  
Spring Arbor Rd.  
Store

|   |       |               |
|---|-------|---------------|
| Scot Pride<br><b>SLICED BACON</b>       | Lb.   | <b>\$1.49</b> |
| Swift Premium<br><b>SLICED BACON</b>    | Lb.   | <b>\$1.59</b> |
| Swift Sausage<br><b>BROWN N' SERVES</b> | 8-oz. | <b>89¢</b>    |
| Bob Evans Roll<br><b>PORK SAUSAGE</b>   | Lb.   | <b>\$1.69</b> |
| Herrud<br><b>BEEF FRANKS</b>            | Lb.   | <b>89¢</b>    |
| Baby<br><b>DRESSED FLOUNDER</b>         | Lb.   | <b>89¢</b>    |
| Booth Cooked<br><b>OCEAN PERCH</b>      | Lb.   | <b>\$1.09</b> |
| Armour Star<br><b>CAN HAM</b>           | 5-Lb. | <b>\$9.99</b> |


ARMOUR STAR  
**CORN BEEF** Rounds **\$1.29** Lb.

WEAVERS  
**Dutch Frye CHICKEN**  
24 Oz. THIGHS & DRUMS **\$2.29**  
24 Oz. COMBO PAK **\$2.29**  
22 Oz. CHICKEN BREAST **\$2.29**

|  |        |               |
|--|--------|---------------|
| Polly Pride Quality<br><b>RIB STEAK</b>    | Lb.    | <b>\$1.69</b> |
| Polly Pride Boneless<br><b>CHUCK ROAST</b> | Lb.    | <b>\$1.09</b> |
| Polly Pride<br><b>ENGLISH ROAST</b>        | Lb.    | <b>\$1.09</b> |
| Polly Pride Boneless<br><b>BEEF STEW</b>   | Lb.    | <b>\$1.09</b> |
| Eckrich Polish or<br><b>SMOKED SAUSAGE</b> | Lb.    | <b>\$1.39</b> |
| Eckrich<br><b>SMORGAS PAK</b>              | Lb.    | <b>\$1.49</b> |
| Eckrich<br><b>SMOK-Y LINKS</b>             | 10-oz. | <b>99¢</b>    |
| Eckrich<br><b>SLICED BOLOGNA</b>           | Lb.    | <b>\$1.39</b> |



# Holiday\* MONEY SAVING SPECIALS



**Polly's MASTER MARKETS**

|                                |                                   |                                     |
|--------------------------------|-----------------------------------|-------------------------------------|
| 1101 M52<br>CHELSEA            | 201 PARK<br>VANDERCOOK LK.        | 1621<br>Spring Arbor Rd.<br>JACKSON |
| 960<br>N. WEST AVE.<br>JACKSON | 115<br>W. PROSPECT ST.<br>JACKSON | 1809<br>E. MICH. AVE.<br>JACKSON    |



|                            |                         |             |        |
|----------------------------|-------------------------|-------------|--------|
| Swift                      | <b>CORNEB BEEF</b>      | 12-oz.      | 89¢    |
| Thank You                  | <b>APPLE JUICE</b>      | 32-oz.      | 39¢    |
| Queen of Scot Large Pitted | <b>RIPE OLIVES</b>      | 16-oz.      | 39¢    |
| Scot Lad                   | <b>STRAWBERRY PRES.</b> | 2-lb.       | 89¢    |
| Scot Lad                   | <b>GRAPE JELLY</b>      | 2-lb.       | 89¢    |
| Thank You Apple            | <b>PIE FILLING</b>      | 16-oz.      | 89¢    |
| Wish Bone                  | <b>ITALIAN DRESSING</b> | 16-oz.      | 69¢    |
| Lipton Soup Mix            | <b>CHICKEN NOODLE</b>   | 3 2-Pk.     | \$1    |
| College Inn                | <b>CHICKEN BROTH</b>    | 4 13-oz.    | \$1    |
| Armour                     | <b>VIENNA SAUSAGE</b>   | 3 5-oz.     | \$1    |
| Armour                     | <b>POTTED MEAT</b>      | 3 5 1/2-oz. | 89¢    |
| For Whiter Clothes         | <b>CLOX 2</b>           | 100-oz.     | \$1.99 |
| Gravy                      | <b>VETS DOG FOOD</b>    | 25-lb.      | \$3.99 |
| Keebler                    | <b>SNACK TOASTS</b>     | 10-oz.      | 59¢    |
| Nabisco Chocolate          | <b>PIN WHEELS</b>       | 12-oz.      | 79¢    |
| Nabisco                    | <b>CHIPS AHOY</b>       | 14 1/2-oz.  | 79¢    |
| Bounce                     | <b>FABRIC SOFTENER</b>  | 40-ct.      | \$1.59 |

Baker's Flavored  
**CHOCOLATE CHIPS**

SAVE 20¢  
WITH IN-STORE COUPON

12-oz. **59¢**

Queen of Scot  
**FRESH DILLS**

• Kosher  
• Polish  
• Plain

32-oz. **39¢**

Libby Solid  
**PUMPKIN**

29-oz. **37¢**

Ocean Spray  
**CRANBERRY SAUCE**

3 16-oz. Cans **\$1**

Scot Lad  
**Miniature Marshmallows**

3 10-oz. **\$1**

REGULAR or DIET  
**FAYGO POP** ..... **2 89¢**  
48-oz.

HOLSUM  
**BROWN 'N SERVES** ... **2 89¢**  
12-Ct. Pkgs.

SCOT LAD  
**ALUMINUM FOIL** ..... **19¢**  
12 in. 25 Ft.

BETTY CROCKER  
**POTATO BUDS** ..... **69¢**  
16-oz.

REALEMON  
**LEMON JUICE** .... **59¢**  
32-oz.

RICH'S FROZEN  
**WHIPPED TOPPING** .. **2 89¢**  
9-oz.

## Holiday\* PRODUCE

Fresh  
**CRANBERRIES**

Lb. **39¢**

Fresh Louisiana  
**YAMS**

Lb. **19¢**



SAVE 30¢  
WITH IN-STORE COUPON

**IDAHO POTATOES**

8-Lb. Bag **\$1.39**

SAVE 20¢  
WITH IN-STORE COUPON

**BOILER ONIONS**

10-Lb. Bag **69¢**

ACORN BUTTERNUT BUTTERCUP  
**SQUASH**

Lb. **10¢**

Scot Farm  
**AMERICAN SINGLES** 12-oz. **89¢**

100% Corn Oil  
**Fleischman's SOFT MARGARINE**

1-Lb. Bowl **59¢**  
with In-Store Coupon

Stella  
**MOZZARELLA SQUARES** 16-oz. **\$1.39**

Scot Farm  
**CINNAMON ROLLS** 9 1/2-oz. **39¢**

Scot Farm  
**BISCUITS** 8-oz. **10¢**  
Homestyle Buttermilk

HOLSUM  
**RAISIN BREAD**

1-Lb. Loaf **59¢**

SAVE 18¢  
WITH IN-STORE COUPON

SAVE 20¢  
WITH IN-STORE COUPON

**PILLSBURY BUNDT CAKES** 25-oz. **99¢**

SAVE 20¢  
WITH IN-STORE COUPON

**PILLSBURY FAMILY WALNUT BROWNIE** 24-oz. **99¢**

SAVE 20¢  
WITH IN-STORE COUPON

**NESCAFE INSTANT COFFEE** 10-oz. **\$2.19**

## Holiday\* FROZEN FOOD

Queen of Scot  
**COOKED SQUASH** ..... **5 12-Oz. \$1**

Indian Trail  
**CRANBERRY RELISH** ..... **45¢**  
10-oz.

Rich's  
**BREAD DOUGH** ..... **59¢**  
2-Pak

SAVE 40¢  
WITH IN-STORE COUPON

**BANQUET TURKEY Buffet Supper**

2-Lb. **\$1.09**

SAVE 20¢  
WITH IN-STORE COUPON

Queen of Scot  
**POLY BAG VEGETABLES**

• Peas  
• Corn  
• Mixed  
20-Oz. **49¢**

PINK or WHITE  
**GRAPEFRUIT**

32-Size 4 for **69¢**

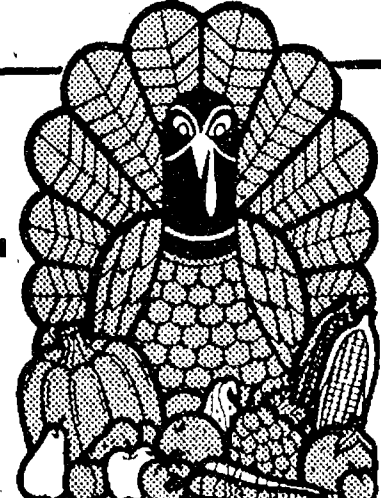
SWEET & JUICY  
**TANGELOS** ..... Dozen **59¢**  
TASTY  
**RED GRAPES** ..... Lb. **39¢**  
U.S. NO. 1 MICHIGAN  
**SPY APPLES** ..... 3-lb. Bag **49¢**

SAVE 47¢  
ON 3

**SEALTEST CHIP DIP**

**3 1/2-Pints \$1**

## ALL ABOUT FOOD



A very proper Bostonian once observed that he would never permit a pig in his living room. "The pig's place," he explained, "is in the kitchen and the dining room!"

He was, of course, referring to pork in its many delightful forms. But a man named Escoffier, the master chef, was more specific. Pork, he said, may deserve to be praised, "but it could never have been included among the preparations of first-class cookery had it not been for the culinary value of hams." All the other cuts, he said, were worthy fare for the peasant's table. But a fine ham is a dish to be set before a king.

Technically, a ham is that section of a hog's hind leg that extends from the knee to the hip. And actually, hams are commonly sold by pieces; the butt end, which is very meaty and excellent for baking...the center, which may be baked but is also excellent sliced and pan-broiled...and the shank, which has more bone and used often for flavoring soups, beans or cabbages.

Esthetically, however, a ham is that marvelous wonderment you set out on your Easter table, gloriously glazed, bejeweled with cloves, bedecked with pineapple. As you see, it is easy to get poetic just thinking about a baked ham.

Best of all, we Americans are able to enjoy the hams that are best of all. For the fact is that a fine ham, like a fine wine, can be identified by the area it came from...different curing and smoking methods...and it is widely agreed that among the finest specimens on earth are our own Virginia hams. That, to coin a phrase, is ham what aml

And for values that are Polly's is the best place to come. And that's the truth, no matter how you slice it!



# Thank You

**FOR SHOPPING AT...**



**WHERE WE ARE  
HAPPY TO.....**

# save

**YOU MONEY!**